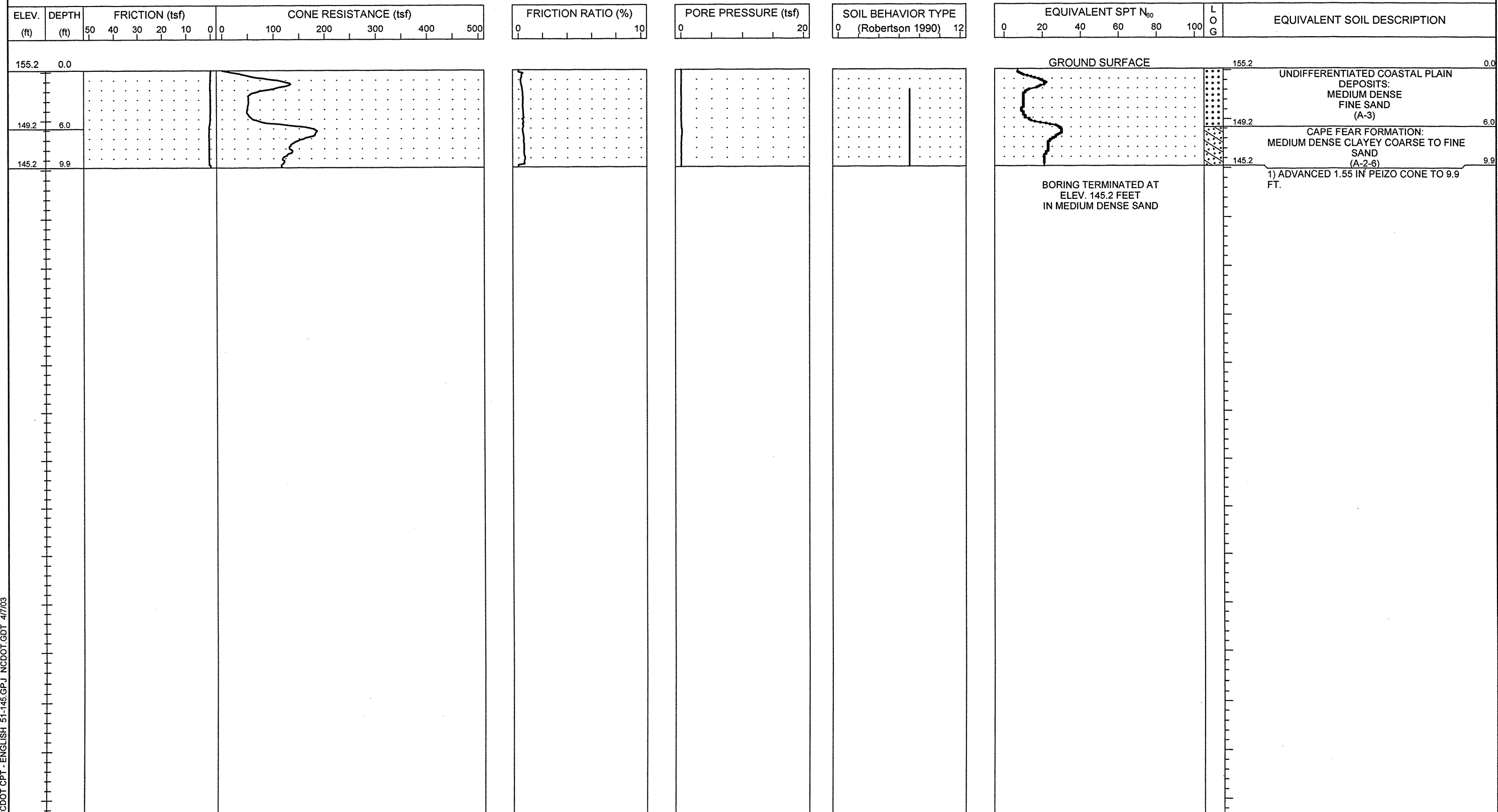




PROJECT NO. 8.1442601	ID. U-0620	COUNTY Cumberland	GEOLOGIST S. JOHNSON	TYPE OF CONE 1.55 in ² PEIZO CONE	ROD TYPE 1.55 in ²	MAXIMUM DOWN PRESSURE Approx. 40 ksf
SITE DESCRIPTION Hope Mills Bypass from SR 1141 (Bingham Drive) to SR 1363 (Elk Road)			GROUND WATER (ft)	TOTAL DEPTH 9.9 ft	DRILL MACHINE Gyro Track	DRILL METHOD Direct Push
BORING NO. CPT-27	BORING LOCATION 27+01	OFFSET 19 ft RT	ALIGNMENT -Y12-	0 HR. N/A	DATE STARTED 12/4/01	COMPLETED 12/4/01
COLLAR ELEV. 155.2 ft	NORTHING 451,392.3	EASTING 2,014,821.4	24 HR. N/A	DRILLER: BUTCH KNAPP	TECHNICIAN ANDY FEIX	SURFACE WATER DEPTH N/A



NCDOT CPT - ENGLISH 51-145.GPJ NCDOT.GDT 4/7/03