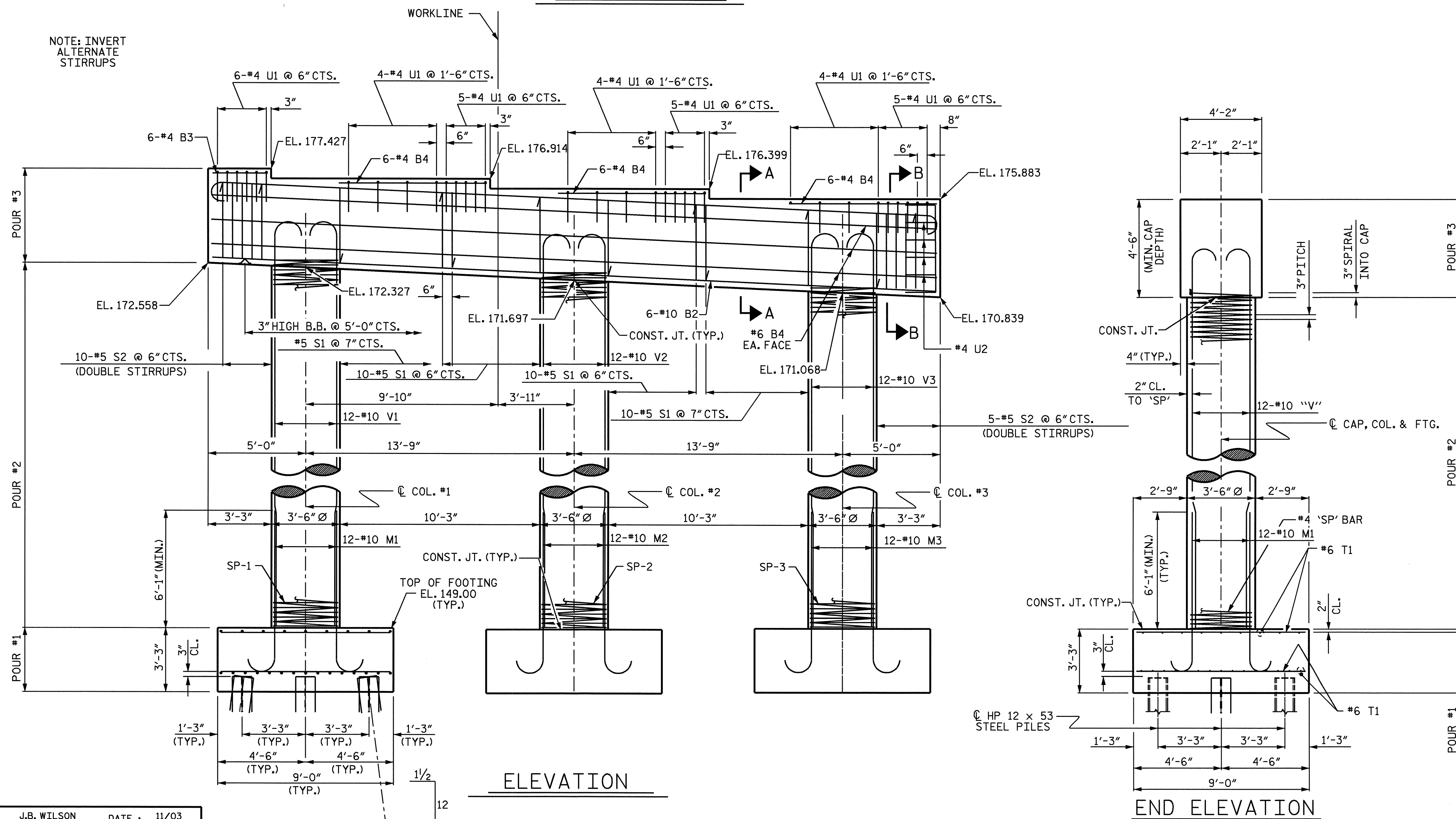


PLAN OF CAP

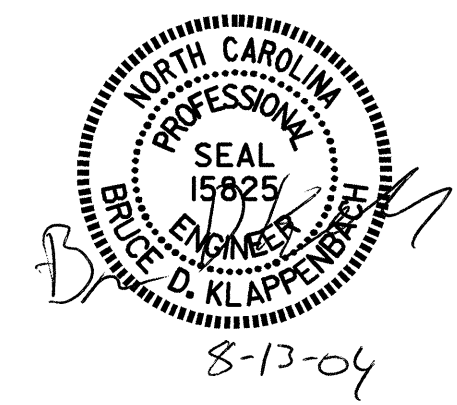
NOTES

STIRRUPS IN CAP MAY BE SHIFTED AS NECESSARY TO CLEAR ANCHOR BOLTS.
 HOOKS ON "V" BARS MAY BE TURNED AS NECESSARY FOR PLACING REINFORCING STEEL.
 ALL STEEL IN THE DRILLED PIERS IS INCLUDED IN THE PAY ITEMS FOR "REINFORCING STEEL" AND "SPIRAL COLUMN REINFORCING STEEL."
 "U" BARS IN THE END OF CAP MAY BE SHIFTED SLIGHTLY TO CLEAR "B" BARS.



ELEVATION

END ELEVATION



PROJECT NO. U-0620
 CUMBERLAND COUNTY
 STATION: 161+95.29 -L-

SHEET 1 OF 2

STATE OF NORTH CAROLINA
 DEPARTMENT OF TRANSPORTATION
 RALEIGH
 SUBSTRUCTURE
 BENT #1
 (RIGHT LANE)

REVISIONS						SHEET NO.	
NO.	BY:	DATE:	NO.	BY:	DATE:	TOTAL SHEETS	
1			3			5-118	
2			4			129	

DRAWN BY: J.B. WILSON DATE: 11/03
 CHECKED BY: D.A. GLADDEN DATE: 11/03

13-AUG-2004 11:23
 W:\sourced\U0620\Str2and3\jwilson\Misc\stationU-0620.sd.B*.03.dgn
 jwilson