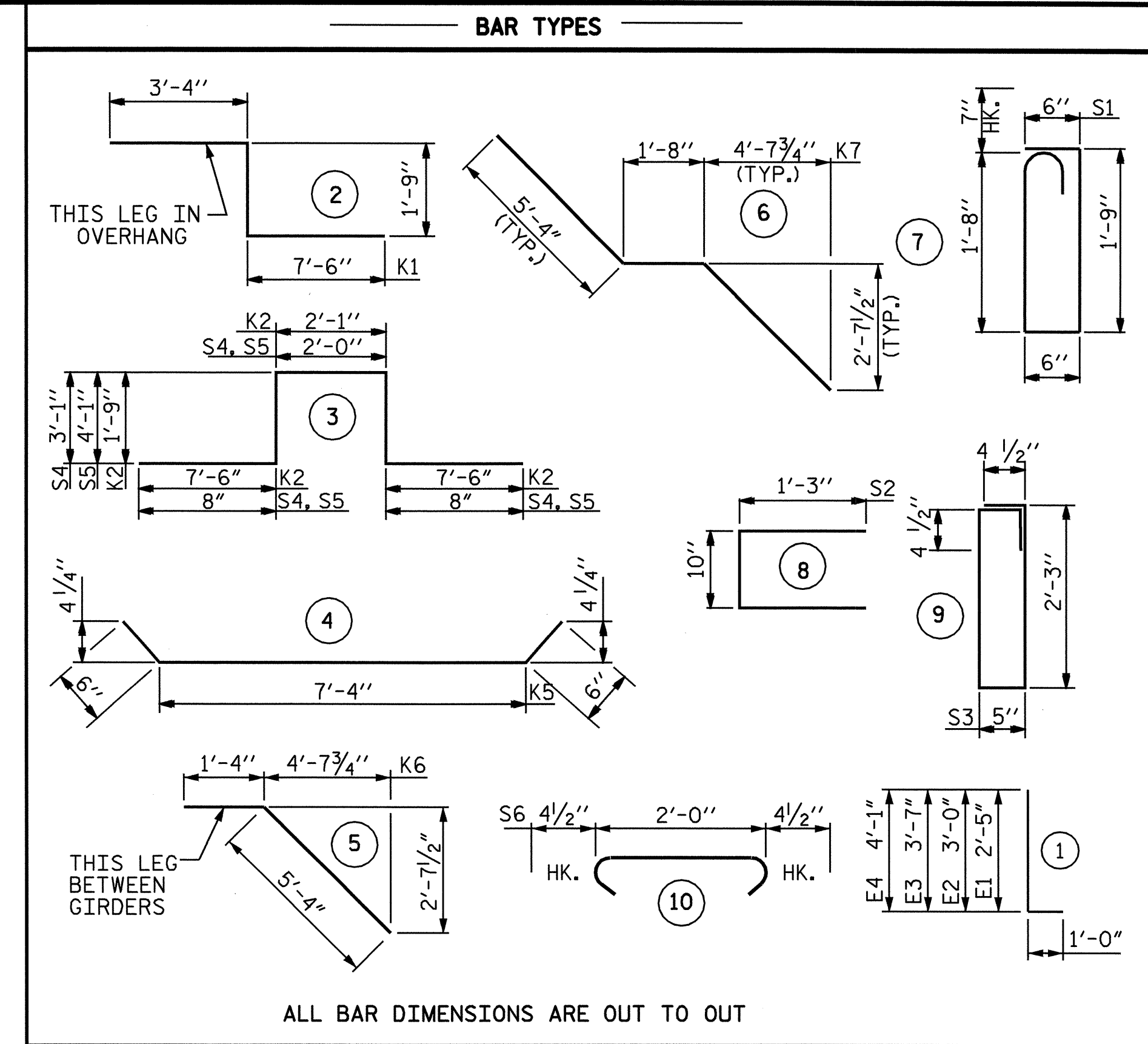


LAYOUT FOR COMPUTING AREA OF REINFORCED CONCRETE DECK SLAB
 SQ. FT. = 10703 (STAGE I)
 SQ. FT. = 4584 (STAGE II)
 SQ. FT. = 15287 (TOTAL)

GROOVING BRIDGE FLOORS	
STAGE I	
BRIDGE DECK (STAGE I)	= 9541 SQ. FT.
APPROACH SLABS (STAGE I)	= 4570 SQ. FT.
TOTAL	= 14111 SQ. FT.
STAGE II	
BRIDGE DECK (STAGE II)	= 3429 SQ. FT.
APPROACH SLABS (STAGE II)	= 2134 SQ. FT.
TOTAL	= 5563 SQ. FT.
GRAND TOTAL	= 19674 SQ. FT.



REINFORCING STEEL BAR SCHEDULE (STAGE I)

BAR	NO.	SIZE	TYPE	LENGTH	WEIGHT	BAR	NO.	SIZE	TYPE	LENGTH	WEIGHT	BAR	NO.	SIZE	TYPE	LENGTH	WEIGHT
* A1	231	#5	STR	44'-1"	10621	* A208	2	#5	STR	21'-2"	44	BAR	NO.	SIZE	TYPE	LENGTH	WEIGHT
* A2	238	#5	STR	36'-0"	8936	* A209	2	#5	STR	19'-2"	40	A326	2	#5	STR	24'-11"	52
A3	235	#5	STR	39'-3"	9620	* A210	2	#5	STR	17'-2"	36	A327	2	#5	STR	22'-10"	48
A4	233	#5	STR	40'-6"	9842	* A211	2	#5	STR	15'-1"	31	A328	2	#5	STR	20'-9"	43
* A101	2	#5	STR	43'-1"	90	* A212	2	#5	STR	13'-1"	27	A329	2	#5	STR	18'-8"	39
* A102	2	#5	STR	41'-0"	86	* A213	2	#5	STR	11'-0"	23	A330	2	#5	STR	16'-7"	35
* A103	2	#5	STR	39'-0"	81	* A214	2	#5	STR	9'-0"	19	A331	2	#5	STR	14'-6"	30
* A104	2	#5	STR	37'-0"	77	* A215	2	#5	STR	7'-0"	15	A332	2	#5	STR	12'-6"	26
* A105	2	#5	STR	34'-11"	73	* A216	2	#5	STR	4'-11"	10	A333	2	#5	STR	10'-5"	22
* A106	2	#5	STR	32'-11"	69	* A217	2	#5	STR	2'-11"	6	A334	2	#5	STR	8'-4"	17
* A107	2	#5	STR	30'-11"	64	* A218	2	#5	STR	33'-10"	71	A335	2	#5	STR	6'-3"	13
* A108	2	#5	STR	28'-10"	60	* A219	2	#5	STR	31'-9"	66	A336	2	#5	STR	4'-2"	9
* A109	2	#5	STR	26'-10"	56	* A220	2	#5	STR	29'-8"	62	A337	2	#5	STR	2'-1"	4
* A110	2	#5	STR	24'-10"	52	* A221	2	#5	STR	27'-7"	58	A401	2	#5	STR	38'-11"	81
* A111	2	#5	STR	22'-10"	48	* A222	2	#5	STR	25'-6"	53	A402	2	#5	STR	36'-11"	77
* A112	2	#5	STR	20'-9"	43	* A223	2	#5	STR	23'-5"	49	A403	2	#5	STR	34'-10"	73
* A113	2	#5	STR	18'-9"	39	* A224	2	#5	STR	21'-4"	45	A404	2	#5	STR	32'-10"	68
* A114	2	#5	STR	16'-9"	35	* A225	2	#5	STR	19'-3"	40	A405	2	#5	STR	30'-10"	64
* A115	2	#5	STR	14'-8"	31	* A226	2	#5	STR	17'-2"	36	A406	2	#5	STR	28'-9"	60
* A116	2	#5	STR	12'-8"	26	* A227	2	#5	STR	15'-1"	31	A407	2	#5	STR	26'-9"	56
* A117	2	#5	STR	10'-8"	22	* A228	2	#5	STR	13'-0"	27	A408	2	#5	STR	24'-8"	51
* A118	2	#5	STR	8'-8"	18	* A229	2	#5	STR	10'-11"	23	A409	2	#5	STR	22'-8"	47
* A119	2	#5	STR	6'-7"	14	* A230	2	#5	STR	8'-10"	18	A410	2	#5	STR	20'-7"	43
* A120	2	#5	STR	4'-7"	10	* A231	2	#5	STR	6'-9"	14	A411	2	#5	STR	18'-7"	39
* A121	2	#5	STR	2'-7"	5	* A232	2	#5	STR	4'-8"	10	A412	2	#5	STR	16'-7"	35
* A122	2	#5	STR	42'-2"	88	* A233	2	#5	STR	2'-8"	6	A413	2	#5	STR	14'-6"	30
* A123	2	#5	STR	40'-1"	84	A301	2	#5	STR	39'-0"	81	A414	2	#5	STR	12'-6"	26
* A124	2	#5	STR	38'-0"	79	A302	2	#5	STR	37'-0"	77	A415	2	#5	STR	10'-5"	22
* A125	2	#5	STR	35'-11"	75	A303	2	#5	STR	34'-11"	73	A416	2	#5	STR	8'-5"	18
* A126	2	#5	STR	33'-10"	71	A304	2	#5	STR	32'-11"	69	A417	2	#5	STR	6'-5"	13
* A127	2	#5	STR	31'-9"	66	A305	2	#5	STR	30'-11"	64	A418	2	#5	STR	4'-4"	9
* A128	2	#5	STR	29'-9"	62	A306	2	#5	STR	28'-10"	60	A419	2	#5	STR	2'-4"	5
* A129	2	#5	STR	27'-8"	58	A307	2	#5	STR	26'-10"	56	A420	2	#5	STR	40'-0"	83
* A130	2	#5	STR	25'-7"	53	A308	2	#5	STR	24'-10"	52	A421	2	#5	STR	37'-11"	79
* A131	2	#5	STR	23'-6"	49	A309	2	#5	STR	22'-10"	48	A422	2	#5	STR	35'-10"	75
* A132	2	#5	STR	21'-5"	45	A310	2	#5	STR	20'-9"	43	A423	2	#5	STR	33'-10"	71
* A133	2	#5	STR	19'-4"	40	A311	2	#5	STR	18'-9"	39	A424	2	#5	STR	31'-9"	66
* A134	2	#5	STR	17'-4"	36	A312	2	#5	STR	16'-9"	35	A425	2	#5	STR	29'-8"	62
* A135	2	#5	STR	15'-3"	32	A313	2	#5	STR	14'-8"	31	A426	2	#5	STR	27'-7"	58
* A136	2	#5	STR	13'-2"	27	A314	2	#5	STR	12'-8"	26	A427	2	#5	STR	25'-6"	53
* A137	2	#5	STR	11'-1"	23	A315	2	#5	STR	10'-8"	22	A428	2	#5	STR	23'-5"	49
* A138	2	#5	STR	9'-0"	19	A316	2	#5	STR	8'-8"	18	A429	2	#5	STR	21'-4"	45
* A139	2	#5	STR	6'-11"	14	A317	2	#5	STR	6'-7"	14	A430	2	#5	STR	19'-3"	40
* A140	2	#5	STR	4'-11"	10	A318	2	#5	STR	4'-7"	10	A431	2	#5	STR	17'-2"	36
* A141	2	#5	STR	2'-10"	6	A319	2	#5	STR	2'-7"	5	A432	2	#5	STR	15'-1"	31
* A201	2	#5	STR	35'-5"	74	A320	2	#5	STR	37'-3"	78	A433	2	#5	STR	13'-0"	27
* A202	2	#5	STR	33'-5"	70	A321	2	#5	STR	35'-3"	74	A434	2	#5	STR	10'-11"	23
* A203	2	#5	STR	31'-5"	66	A322	2	#5	STR	33'-2"	69	A435	2	#5	STR	8'-10"	18
* A204	2	#5	STR	29'-4"	61	A323	2	#5	STR	31'-1"	65	A436	2	#5	STR	6'-9"	14
* A205	2	#5	STR	27'-4"	57	A324	2	#5	STR	29'-0"	60	A437	2	#5	STR	4'-8"	10
* A206	2	#5	STR	25'-3"	53	A325	2	#5	STR	26'-11"	56	A438	2	#5	STR	2'-7"	5
* A207	2	#5	STR	23'-3"	48												

REINFORCING STEEL = 46586 LBS
 * EPOXY COATED REINF. STEEL = 50234 LBS

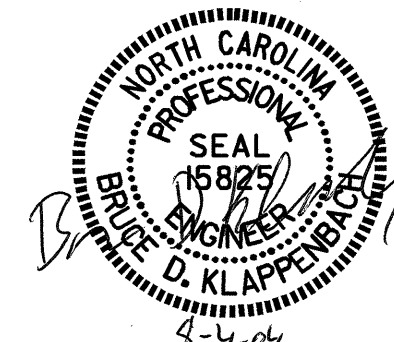
SUPERSTRUCTURE REINFORCING STEEL LENGTHS ARE BASED ON THE FOLLOWING MINIMUM SPLICE LENGTHS					
BAR SIZE	SUPERSTRUCTURE EXCEPT APPROACH SLABS, PARAPET, AND BARRIER RAIL		APPROACH SLABS		PARAPET AND BARRIER RAIL
	EPOXY COATED	UNCOATED	EPOXY COATED	UNCOATED	
#4	2'-0"	1'-9"	2'-0"	1'-9"	2'-9"
#5	2'-6"	2'-2"	2'-6"	2'-2"	3'-5"
#6	3'-0"	2'-7"	3'-10"	2'-7"	4'-4"
#7	5'-3"	3'-6"	—	—	—
#8	6'-10"	4'-7"	—	—	—

PROJECT NO. U-0620
CUMBERLAND COUNTY
 STATION: 32+18.00 -L-

SHEET 1 OF 2

STATE OF NORTH CAROLINA
 DEPARTMENT OF TRANSPORTATION
 RALEIGH

SUPERSTRUCTURE
 BILL OF MATERIAL



REVISIONS						SHEET NO. S-28
NO.	BY:	DATE:	NO.	BY:	DATE:	
1			3			TOTAL SHEETS 129
2			4			

DRAWN BY: M. G. SHAIKH DATE: 5-28-03
 CHECKED BY: D. A. GLADDEN DATE: 07-03