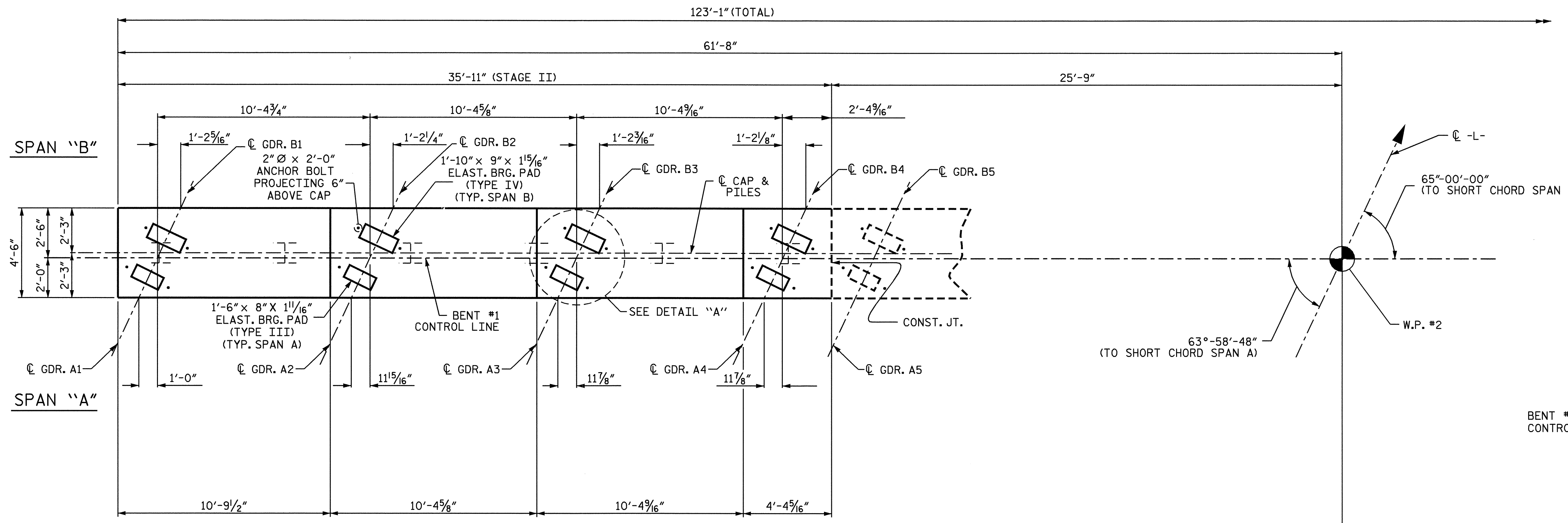


NOTES

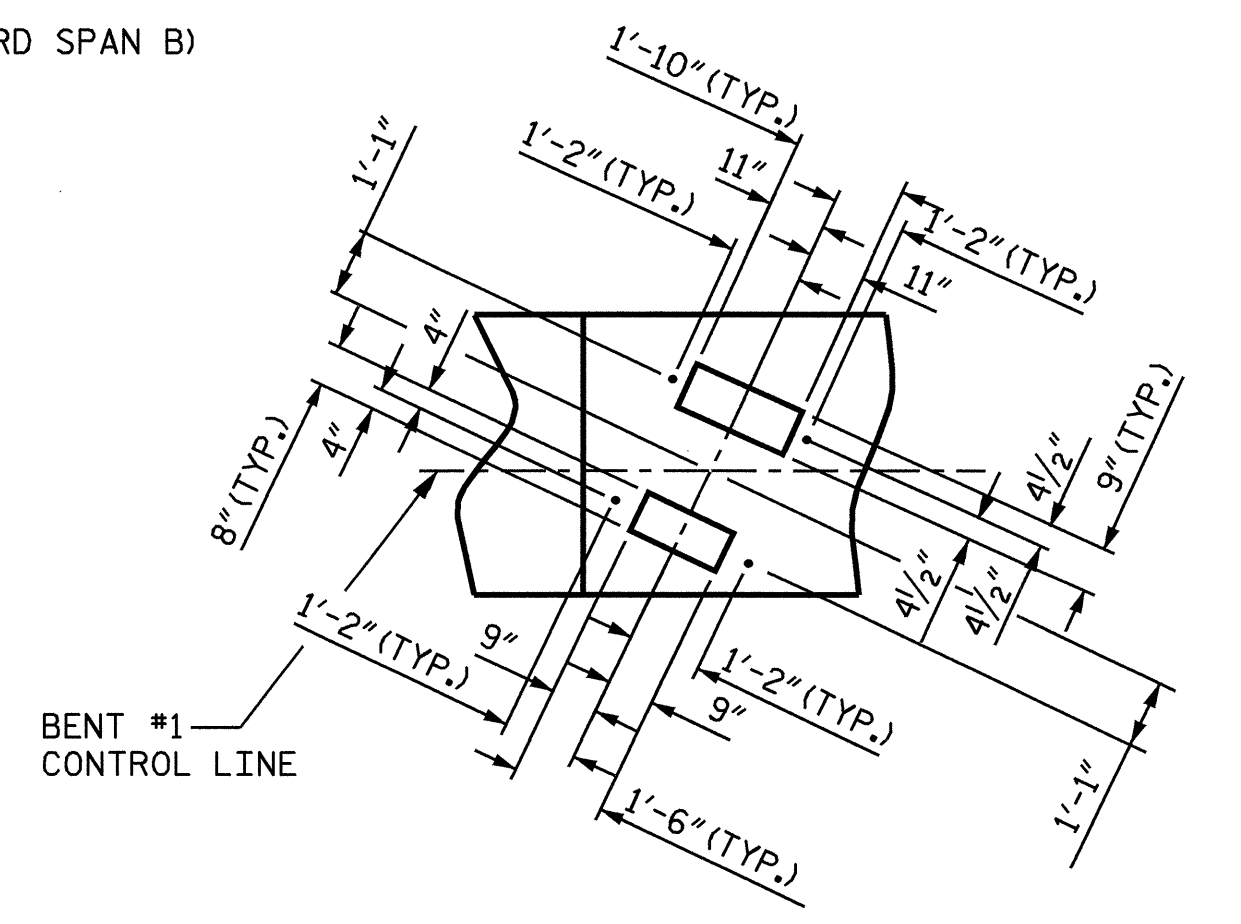
STIRRUPS IN CAP MAY BE SHIFTED AS NECESSARY TO CLEAR ANCHOR BOLTS.

"U" BARS IN THE END OF CAP MAY BE SHIFTED SLIGHTLY TO CLEAR "B" BARS.

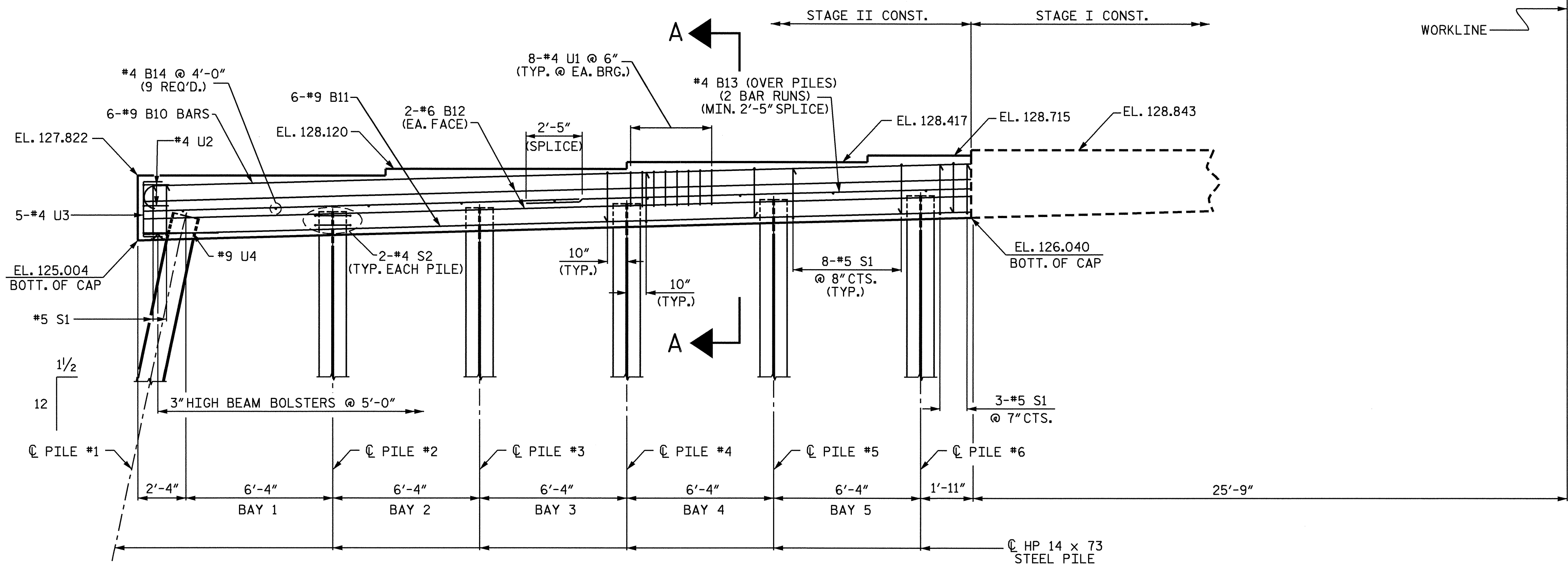
THE CONTRACTOR'S ATTENTION IS CALLED TO THE FACT THAT THE CENTERLINE OF THE BENT IS OFFSET FROM THE BENT CONTROL LINE.



PLAN



DETAIL "A"



ELEVATION

NOTE: INVERT ALTERNATE STIRRUPS

TOP OF PILE ELEV.	
PILE No.	TOP OF PILE ELEV.
#1	126.071
#2	126.254
#3	126.437
#4	126.619
#5	126.802
#6	126.985

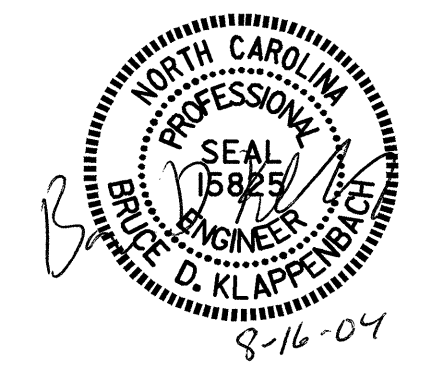
PROJECT NO. U-0620
CUMBERLAND COUNTY
 STATION: 32+18.00 -L-

SHEET 2 OF 3

STATE OF NORTH CAROLINA
 DEPARTMENT OF TRANSPORTATION
 RALEIGH

SUBSTRUCTURE
BENT #1
 (STAGE II)

REVISIONS						SHEET NO.
NO.	BY:	DATE:	NO.	BY:	DATE:	5-34
1			3			TOTAL SHEETS
2			4			129



DRAWN BY : J.B. WILSON DATE : 1/ 04
 CHECKED BY : M.G. SHAIKH DATE : 2/ 04

16-AUG-2004 08:19
 w:\squad\U0620\Str1\jwilson\Microrstation\U-0620_sd.B*.01.dgn
 mpatterson