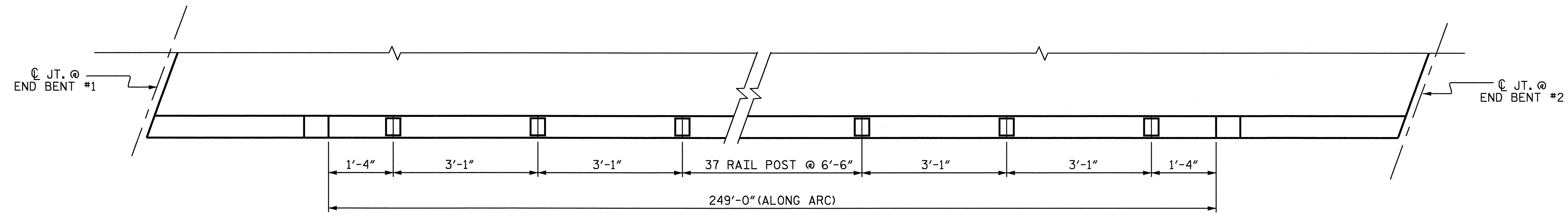
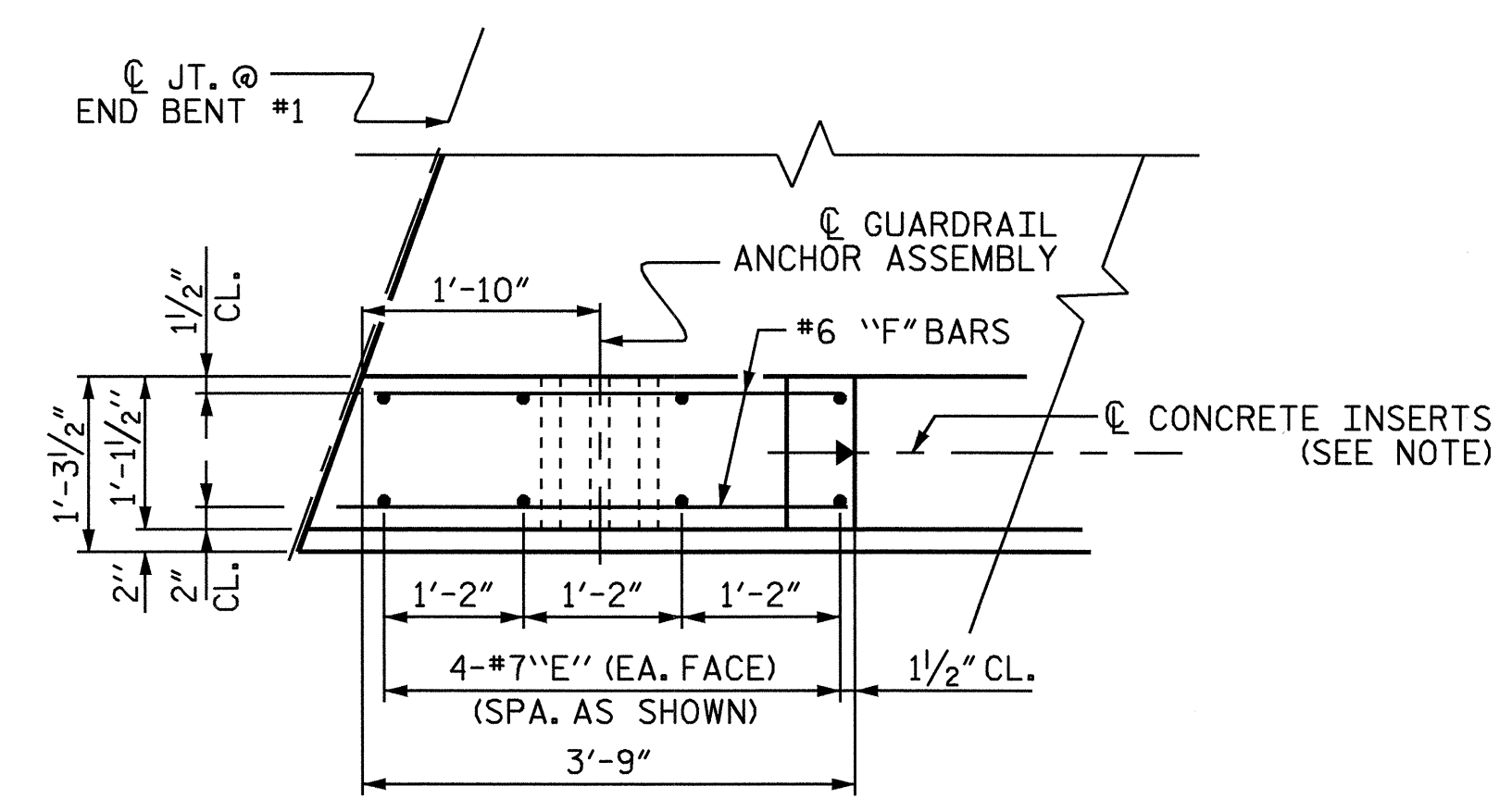


NOTE

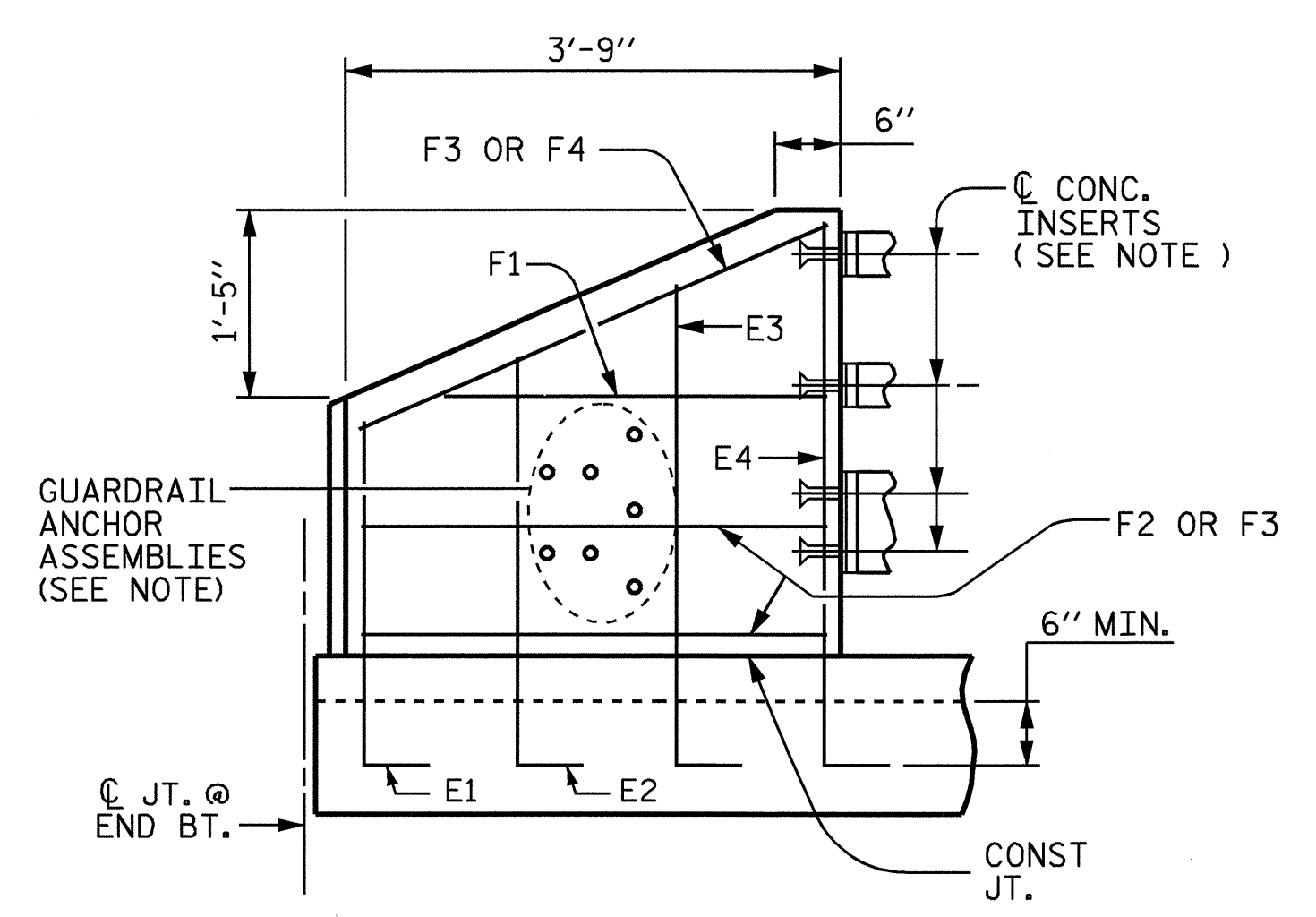
FOR DETAILS OF CONCRETE INSERTS, AND GUARDRAILS ANCHOR ASSEMBLIES, SEE "GUARDRAIL ANCHORAGE DETAILS FOR METAL RAILS" & "3 BAR METAL RAIL" SHEETS.



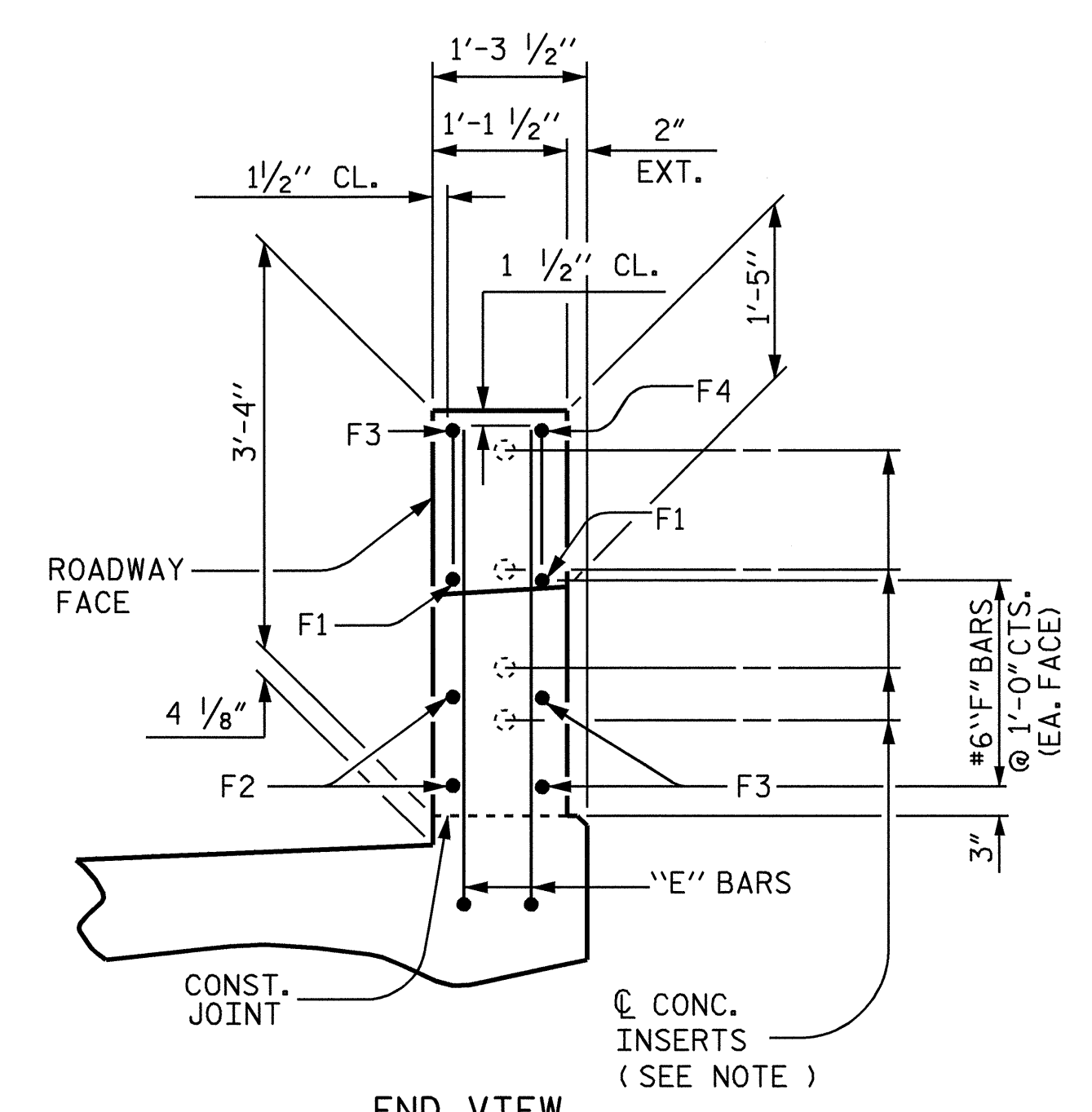
PLAN OF RAIL POST SPACING



PLAN OF END POST



ELEVATION

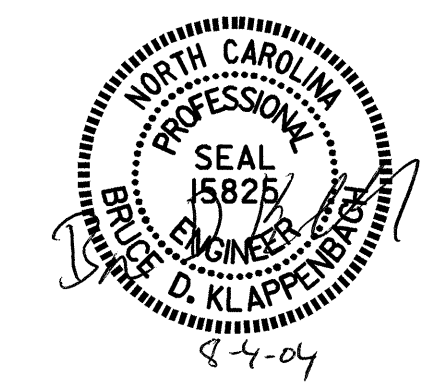


END VIEW

END POST DETAILS

PROJECT NO. U-0620
CUMBERLAND COUNTY
 STATION: 161+95.29 -L-

STATE OF NORTH CAROLINA
 DEPARTMENT OF TRANSPORTATION
 RALEIGH
**RAIL POST SPACING
 AND
 END POST DETAILS
 (RIGHT LANE)**



REVISIONS						SHEET NO.	
NO.	BY:	DATE:	NO.	BY:	DATE:	S-107	
1			3			TOTAL SHEETS	
2			4			129	

DRAWN BY: M. G. SHAIKH DATE: 11-25-03
 CHECKED BY: D. A. GLADDEN DATE: 12-30-03