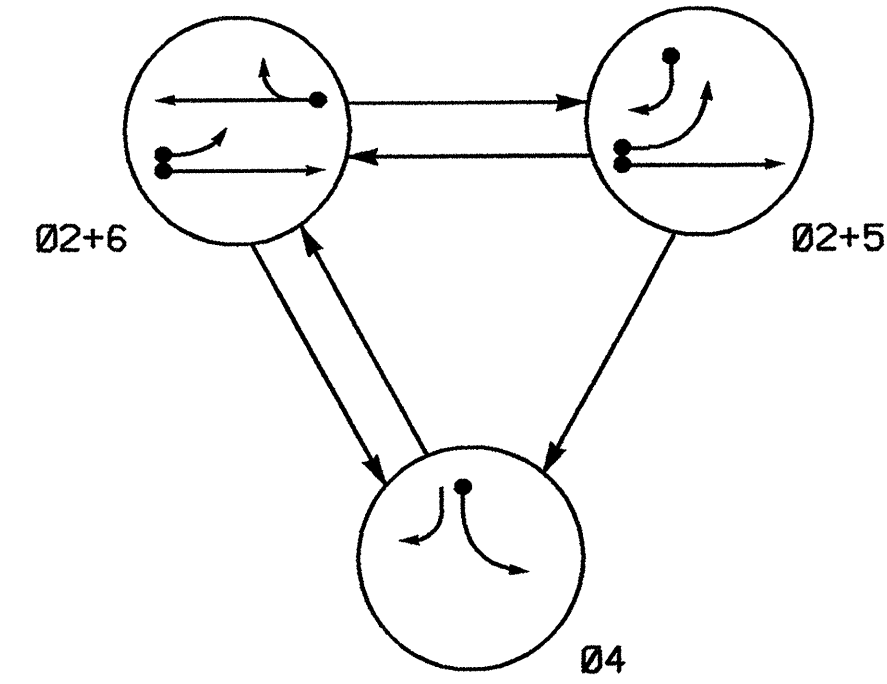


PHASING DIAGRAM



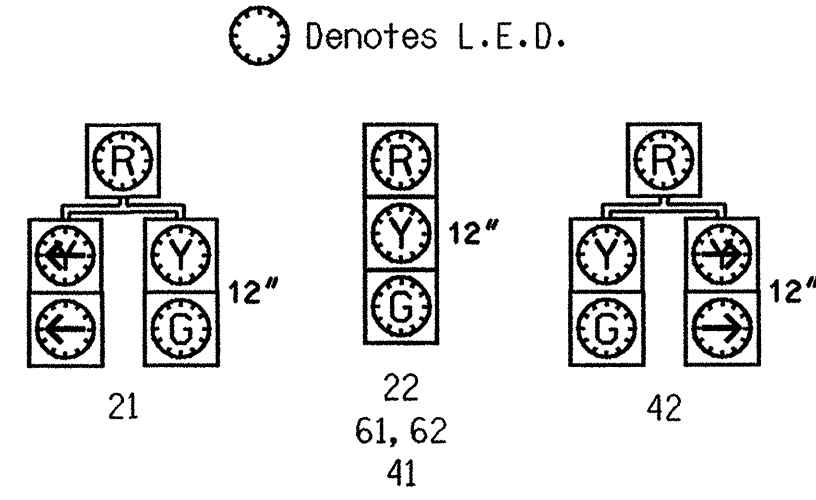
PHASING DIAGRAM DETECTION LEGEND

- DETECTED MOVEMENT
- UNDETECTED MOVEMENT (OVERLAP)
- UNSIGNALIZED MOVEMENT
- PEDESTRIAN MOVEMENT

TABLE OF OPERATION

SIGNAL FACE	PHASE			
	Ø2+6	Ø2+5	Ø4	FLIGHT
21	G	G	R	Y
22	G	G	R	Y
41	R	R	G	R
42	R	R	G	R
61, 62	G	R	R	Y

SIGNAL FACE I.D.



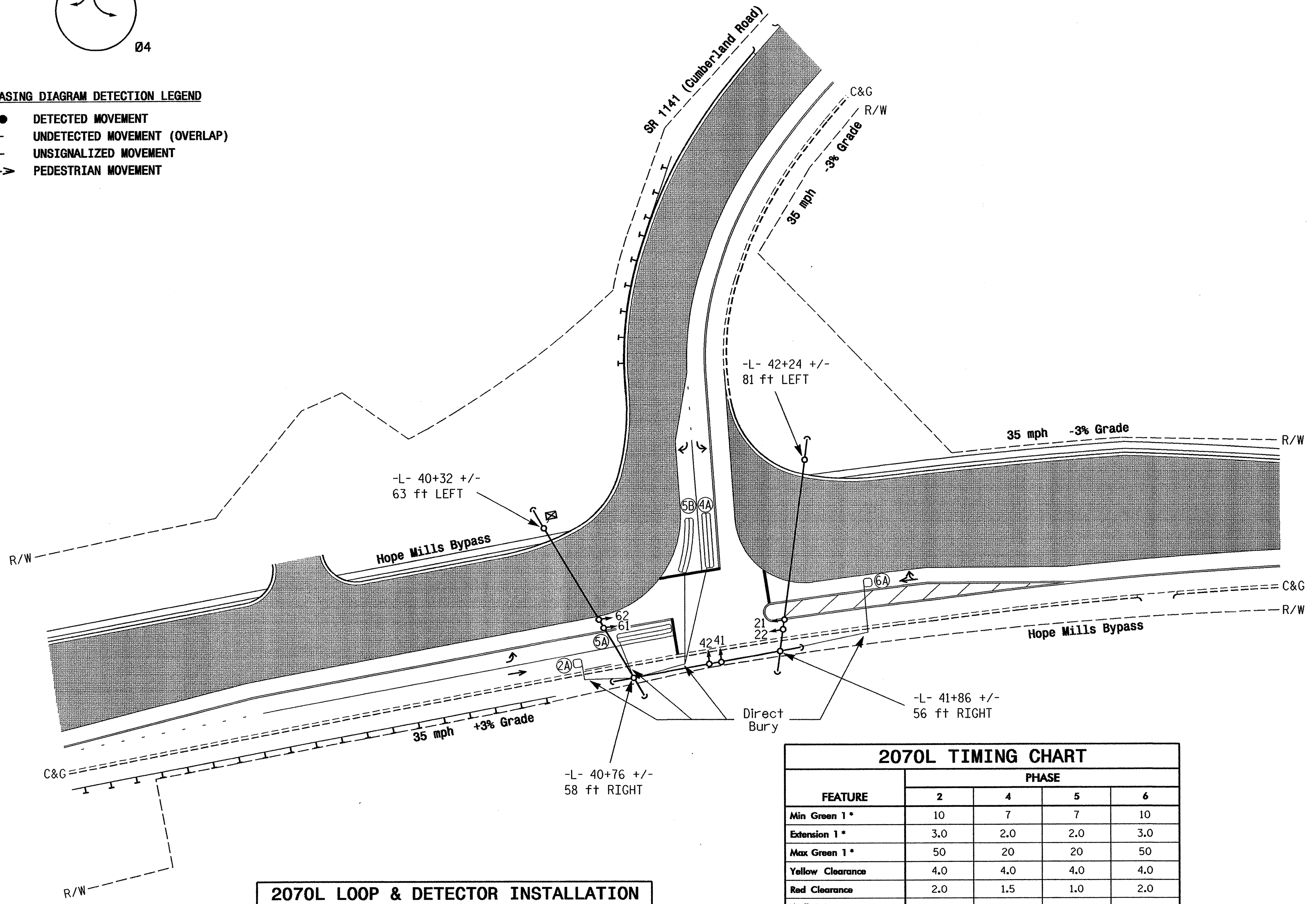
PLAN QUANTITIES

Pay Item	Feet
Signal Cable	760
Messenger Cable	410
Lead-in Cable	1150

3 Phase Fully Actuated (Isolated)

NOTES

- Refer to "Roadway Standard Drawings NCDOT" dated January 2002 and "Standard Specifications for Roads and Structures" dated January 2002.
- Set all detector units to presence mode.



LEGEND

- | PROPOSED | EXISTING |
|----------|----------|
| | |
| | |
| | |
| | |
| | |
| | |
| | |
| | |
| | |
| | |
| | |
| | |
| | |
| | |
| | |

2070L TIMING CHART

FEATURE	PHASE			
	2	4	5	6
Min Green 1*	10	7	7	10
Extension 1*	3.0	2.0	2.0	3.0
Max Green 1*	50	20	20	50
Yellow Clearance	4.0	4.0	4.0	4.0
Red Clearance	2.0	1.5	1.0	2.0
Walk 1*	-	-	-	-
Don't Walk 1	-	-	-	-
Seconds Per Actuation*	-	-	-	-
Max Variable Initial*	-	-	-	-
Time Before Reduction*	-	-	-	-
Time To Reduction*	-	-	-	-
Minimum Gap	-	-	-	-
Recall Mode	MIN RECALL	-	-	MIN RECALL
Vehicle Call Memory	YELLOW	-	-	YELLOW
Dual Entry	-	-	-	-
Simultaneous Gap	ON	ON	ON	ON

2070L LOOP & DETECTOR INSTALLATION

LOOP	SIZE (FT)	TURNS	DISTANCE FROM STOPBAR (FT)	DETECTOR PROGRAMMING								
				INDUCTIVE LOOPS	NEW LOOP	PHASE	CALLING	EXTENSION	FULL TIME DELAY	SYSTEM LOOP	STRETCH TIME	DELAY TIME
2A	6x6	3	70	Y	2	Y	Y	-	-	-	-	Y
4A	6x40	2-4-2	0	Y	4	Y	Y	-	-	-	3	Y
5A	6x40	2-4-2	0	Y	2	Y	Y	-	-	-	3	Y
5B	6x40	2-4-2	0	Y	5	Y	Y	-	-	-	15	Y
6A	6x6	3	70	Y	6	Y	Y	-	-	-	-	Y

* These values may be field adjusted. Do not adjust Min Green and Extension times for phases 2 and 6 lower than what is shown. Min Green for all other phases should not be lower than 4 seconds.

New Installation: Phase III Temporary Design

	Hope Mills Bypass at SR 1141 (Cumberland Road)		
	Division 6	Cumberland County	
PLAN DATE: May 2003		REVIEWED BY: L.A. Elliott	
PREPARED BY: P.J. Porter		REVIEWED BY: STF/JPG	
SCALE: 1"=50'		REVISIONS	DATE
122 N. McDowell St., Raleigh, NC 27603		SIGNATURE: <i>Timothy J. Williams</i> DATE: 10/22/03	
SIG. INVENTORY NO. 06-1254T			