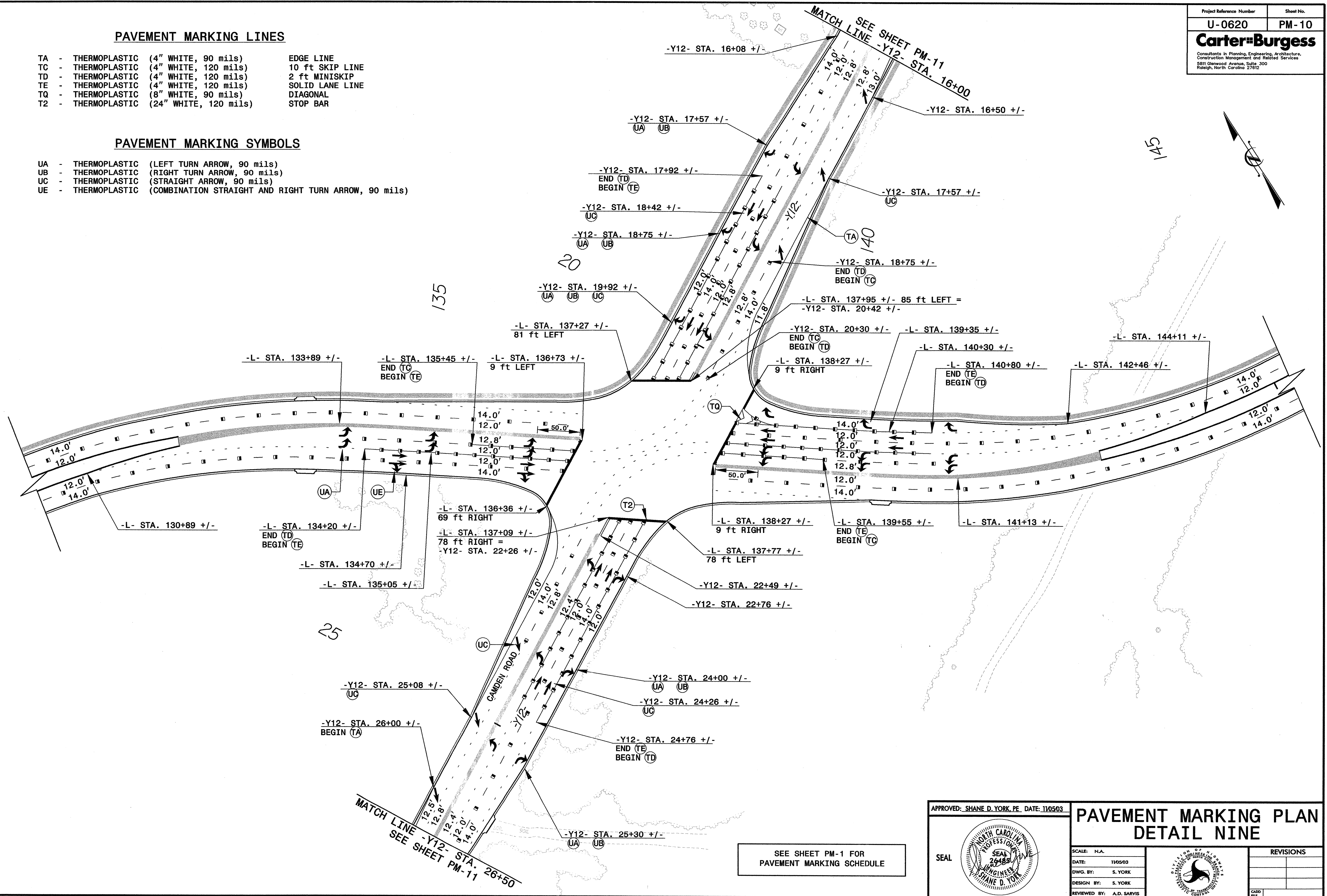


PAVEMENT MARKING LINES

- | | |
|--|-----------------|
| TA - THERMOPLASTIC (4" WHITE, 90 mils) | EDGE LINE |
| TC - THERMOPLASTIC (4" WHITE, 120 mils) | 10 ft SKIP LINE |
| TD - THERMOPLASTIC (4" WHITE, 120 mils) | 2 ft MINISKIP |
| TE - THERMOPLASTIC (4" WHITE, 120 mils) | SOLID LANE LINE |
| TQ - THERMOPLASTIC (8" WHITE, 90 mils) | DIAGONAL |
| T2 - THERMOPLASTIC (24" WHITE, 120 mils) | STOP BAR |

PAVEMENT MARKING SYMBOLS

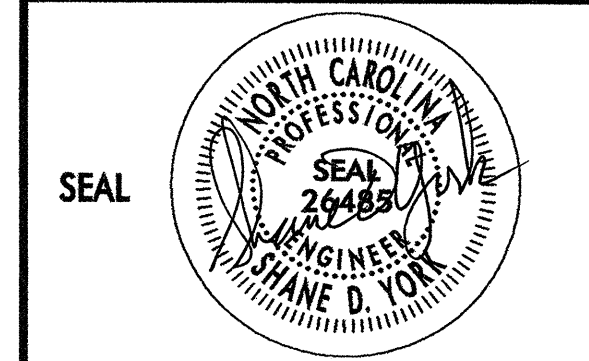
- | |
|---|
| UA - THERMOPLASTIC (LEFT TURN ARROW, 90 mils) |
| UB - THERMOPLASTIC (RIGHT TURN ARROW, 90 mils) |
| UC - THERMOPLASTIC (STRAIGHT ARROW, 90 mils) |
| UE - THERMOPLASTIC (COMBINATION STRAIGHT AND RIGHT TURN ARROW, 90 mils) |



02:51:09 PM
 11/05/2003
 r:\trafficControl\TCP\U0620_TCP_PM10_PSH.DGN

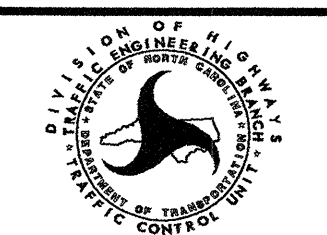
SEE SHEET PM-1 FOR
PAVEMENT MARKING SCHEDULE

APPROVED: SHANE D. YORK, PE DATE: 11/05/03



**PAVEMENT MARKING PLAN
DETAIL NINE**

SCALE: N/A
 DATE: 11/05/03
 DWG. BY: S. YORK
 DESIGN BY: S. YORK
 REVIEWED BY: A.D. SARVIS



REVISIONS	