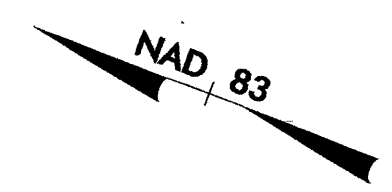


PROJECT REFERENCE NO. U-0620		SHEET NO. EC-3/CONST.4	
RW SHEET NO.			
ROADWAY DESIGN ENGINEER		HYDRAULICS ENGINEER	

SEE SHEET 25 FOR -L- PROFILE  
 ALL DRIVEWAYS ARE 20' WIDE  
 UNLESS OTHERWISE NOTED  
 BREAK UP AND REMOVE EXISTING PAVEMENT  
 UNDERNEATH PROPOSED RAISED MEDIAN.

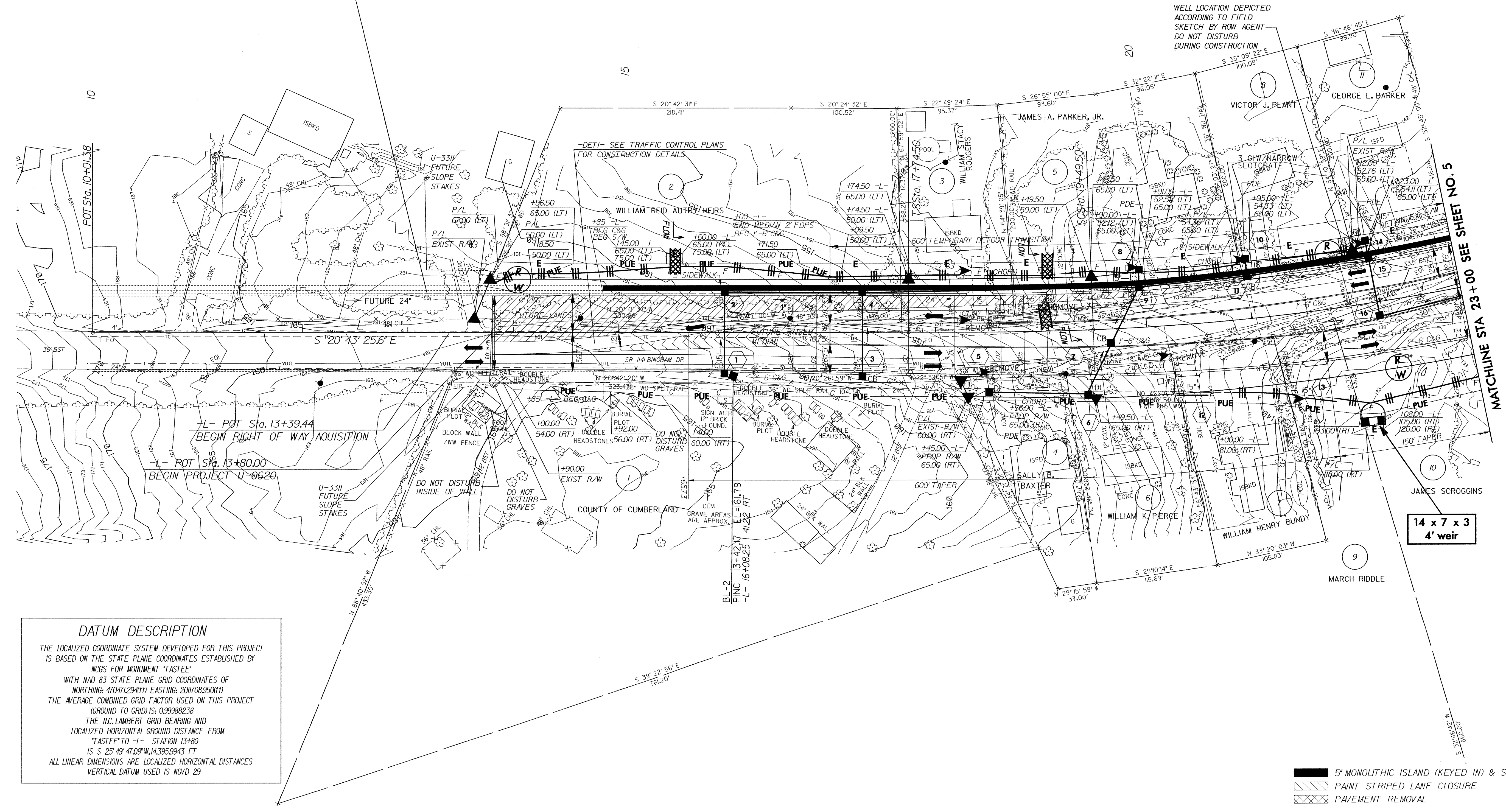
-L-		
Pls Sta 18+91.7	PI Sta 21+46.76	Pls Sta 24+15.30
Os = 2' 11" 15.0"	Δ = 9' 50" 20.5" (LT)	Os = 1' 29" 59.8"
Ls = 175.00'	D = 2' 30" 00.0"	Os = 1' 52" 30.2"
LT = 116.68'	L = 393.56'	Ls = 150.00'
ST = 58.34'	T = 197.27'	LT = 77.80'
	R = 2,291.83'	ST = 72.24'
	SE = 0.040	
	INC = 43.75	



NOTE:  
 PLACE TEMPORARY ROCK SEDIMENT DAMS TYPE-B  
 AND TEMPORARY ROCK SILT CHECKS TYPE-A AT  
 DRAINAGE OUTLETS.

CLEARING AND GRUBBING  
 EROSION CONTROL FOR  
 CONSTRUCTION SHEET 4

# FUTURE PROJECT U-3311



**DATUM DESCRIPTION**  
 THE LOCALIZED COORDINATE SYSTEM DEVELOPED FOR THIS PROJECT IS BASED ON THE STATE PLANE COORDINATES ESTABLISHED BY NC/GS FOR MONUMENT "TASSEE"  
 WITH NAD 83 STATE PLANE GRID COORDINATES OF  
 NORTHING: 470471294(11) EASTING: 201708350(11)  
 THE AVERAGE COMBINED GRID FACTOR USED ON THIS PROJECT (GROUND TO GRID) IS: 0.99988238  
 THE N.C. LAMBERT GRID BEARING AND LOCALIZED HORIZONTAL GROUND DISTANCE FROM "TASSEE" TO -L- STATION 13+80 IS 25° 49' 41.09" W, 14,395.9943 FT  
 ALL LINEAR DIMENSIONS ARE LOCALIZED HORIZONTAL DISTANCES  
 VERTICAL DATUM USED IS NGVD 29

- 5' MONOLITHIC ISLAND (KEYED IN) & SIDEWALK
- PAINT STRIPED LANE CLOSURE
- PAVEMENT REMOVAL

14 x 7 x 3  
 4' weir

MATCHLINE STA 23+00 SEE SHEET NO. 5