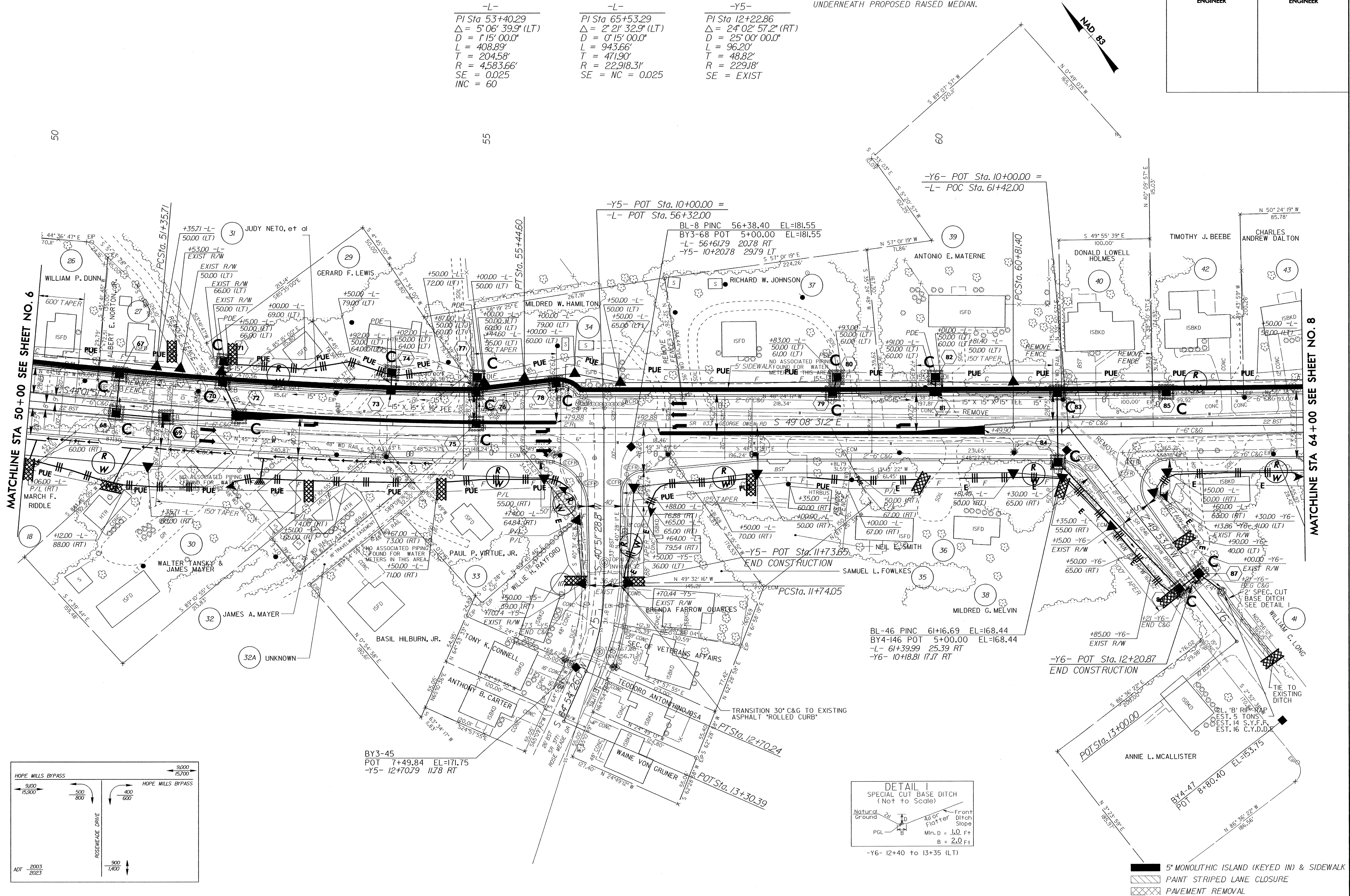


PROJECT REFERENCE NO.	SHEET NO.
U-0620	EC-31/CONST.7
RW SHEET NO.	
ROADWAY DESIGN ENGINEER	HYDRAULICS ENGINEER

ALL DRIVEWAYS ARE 20' WIDE
UNLESS OTHERWISE NOTED
BREAK UP AND REMOVE EXISTING PAVEMENT
UNDERNEATH PROPOSED RAISED MEDIAN.

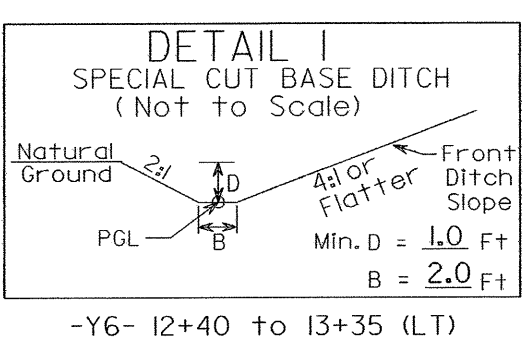
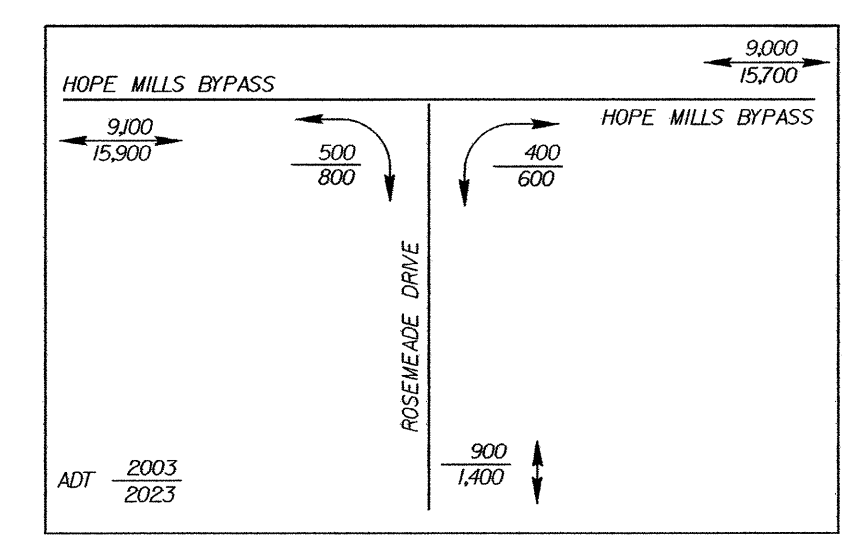
SEE SHEET 26 FOR -L- PROFILE
SEE SHEET 34 FOR -Y5- PROFILE
SEE SHEET 34 FOR -Y6- PROFILE

-L-	-L-	-Y5-
PI Sta 53+40.29	PI Sta 65+53.29	PI Sta 12+22.86
$\Delta = 5' 06'' 39.9''$ (LT)	$\Delta = 2' 21'' 32.9''$ (LT)	$\Delta = 24' 02'' 57.2''$ (RT)
$D = 1' 15'' 00.0''$	$D = 0' 15'' 00.0''$	$D = 25' 00'' 00.0''$
$L = 408.89'$	$L = 943.66'$	$L = 96.20'$
$T = 204.58'$	$T = 471.90'$	$T = 48.82'$
$R = 4,583.66'$	$R = 22,918.31'$	$R = 229.18'$
$SE = 0.025$	$SE = NC = 0.025$	$SE = EXIST$
$INC = 60$		



MATCHLINE STA 50+00 SEE SHEET NO. 6

MATCHLINE STA 64+00 SEE SHEET NO. 8



- 5' MONOLITHIC ISLAND (KEYED IN) & SIDEWALK
- PAINT STRIPED LANE CLOSURE
- PAVEMENT REMOVAL