

REVISIONS

12/18/02 CONVERTED TEMPORARY CONSTRUCTION EASEMENT TO PERMANENT UTILITY EASEMENT ON PARCELS 45-46, 50, AND 118, COMBINED PARCELS 41 AND 44, & 51 AND 53. REVISED PARCEL OWNER NAMES AND DEED BOOK INFORMATION ON PARCELS 41 AND 51. 4/15/03 NAME CHANGE ON PARCEL 45. UPDATED RIGHT OF WAY AREA DATA SHEET TO REFLECT CHANGES. 5/19/03 PUE TO TCE ON PARCEL 118 RESULTING IN REVISED PUE AREA ON PARCEL 50. 8/12/03 ADDED DRIVE ON PARCEL 46

PROJECT REFERENCE NO. U-0620		SHEET NO. EC-32/CONST.B	
RW SHEET NO.			
ROADWAY DESIGN ENGINEER		HYDRAULICS ENGINEER	

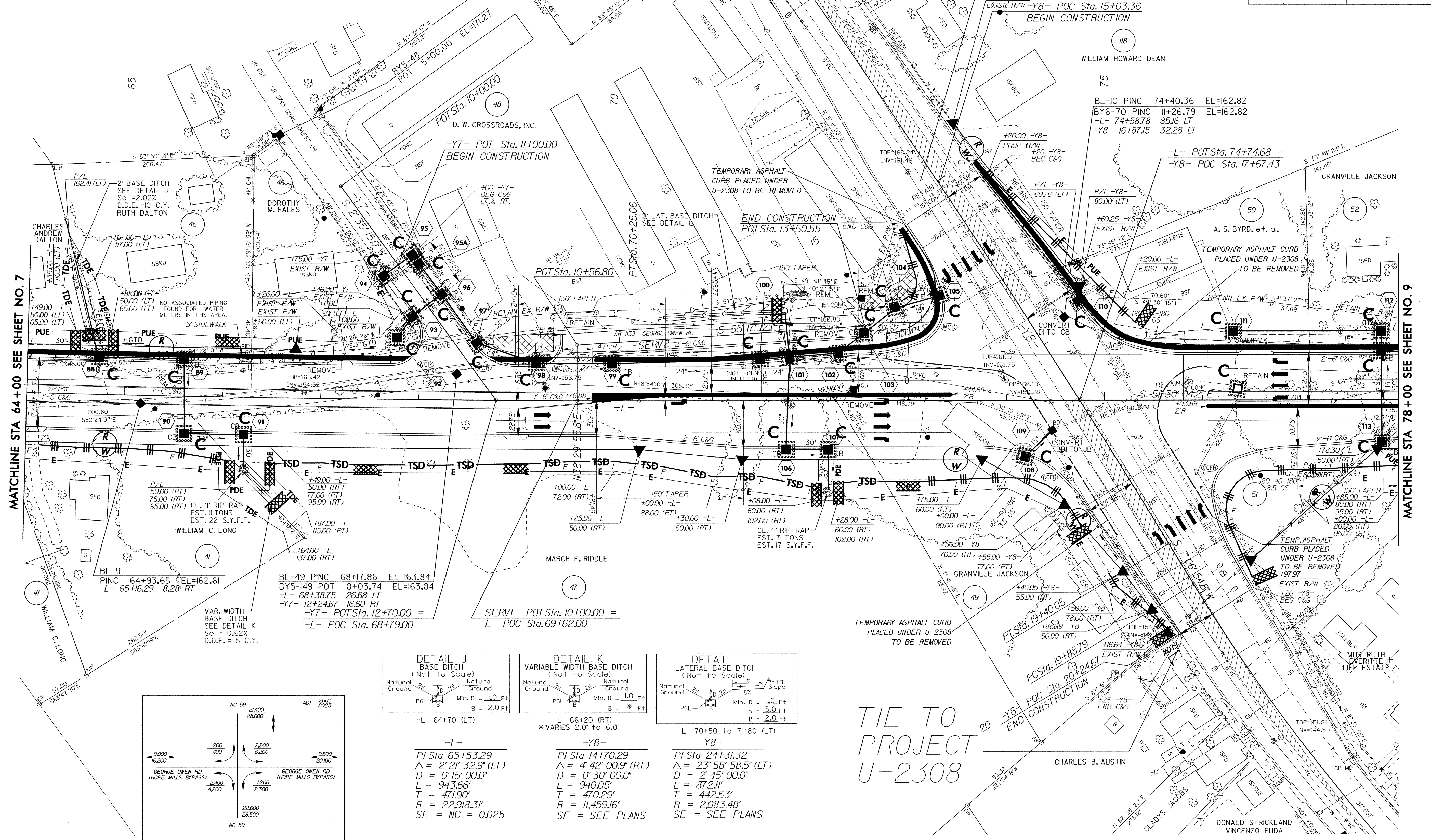
ALL DRIVEWAYS ARE 20' WIDE UNLESS OTHERWISE NOTED. BREAK UP AND REMOVE EXISTING PAVEMENT UNDERNEATH PROPOSED RAISED MEDIAN.

SEE SHEET 27 FOR -L- PROFILE
SEE SHEET 34 FOR -Y7- PROFILE
SEE SHEET 35 FOR -Y8- PROFILE
SEE SHEET 37 FOR -SERV2- PROFILE

TIE TO PROJECT U-2308

MATCHLINE STA 64+00 SEE SHEET NO. 7

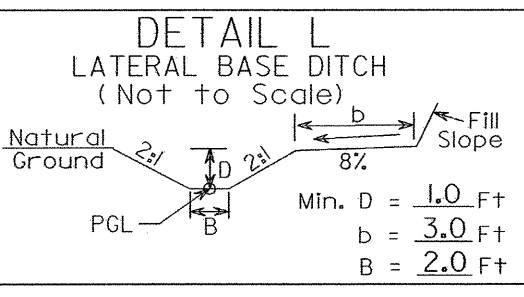
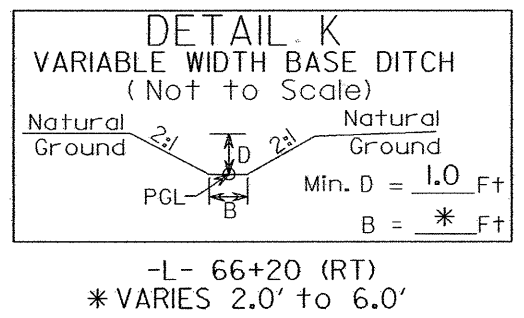
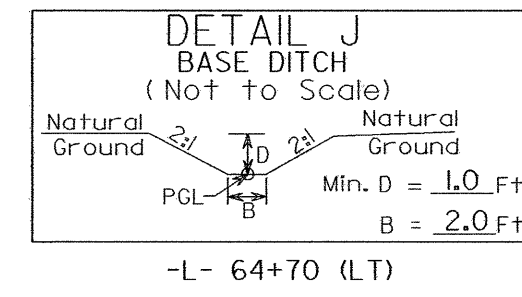
MATCHLINE STA 78+00 SEE SHEET NO. 9



BL-9
PINC 64+93.65 EL=162.61
-L- 65+16.29 8.28 RT

BL-49 PINC 68+17.86 EL=163.84
BY5-149 POT 8+03.74 EL=163.84
-L- 68+38.75 26.68 LT
-Y7- 12+24.67 16.60 RT
-Y7- POT Sta. 12+70.00 =
-L- POC Sta. 68+79.00

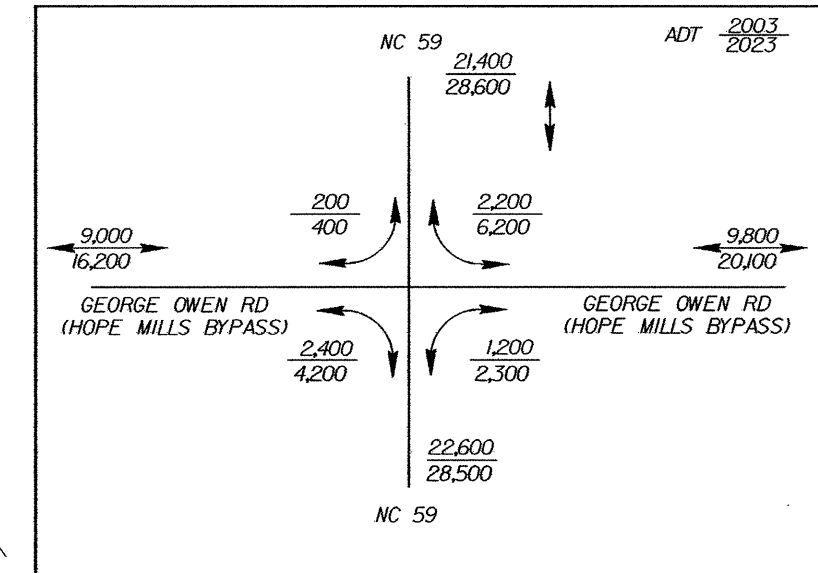
-SERV1- POT Sta. 10+00.00 =
-L- POC Sta. 69+62.00



-L-
PI Sta 65+53.29
Δ = 2° 21' 32.9" (LT)
D = 0' 15' 00.0"
L = 943.66'
T = 471.90'
R = 22,918.31'
SE = NC = 0.025

-Y8-
PI Sta 14+70.29
Δ = 4° 42' 00.9" (RT)
D = 0' 30' 00.0"
L = 940.05'
T = 470.29'
R = 11,459.16'
SE = SEE PLANS

-Y8-
PI Sta 24+31.32
Δ = 23° 58' 58.5" (LT)
D = 2' 45' 00.0"
L = 872.11'
T = 442.53'
R = 2,083.48'
SE = SEE PLANS



TIE TO PROJECT U-2308

5' MONOLITHIC ISLAND (KEYED IN) & SIDEWALK
PAINT STRIPED LANE CLOSURE
PAVEMENT REMOVAL