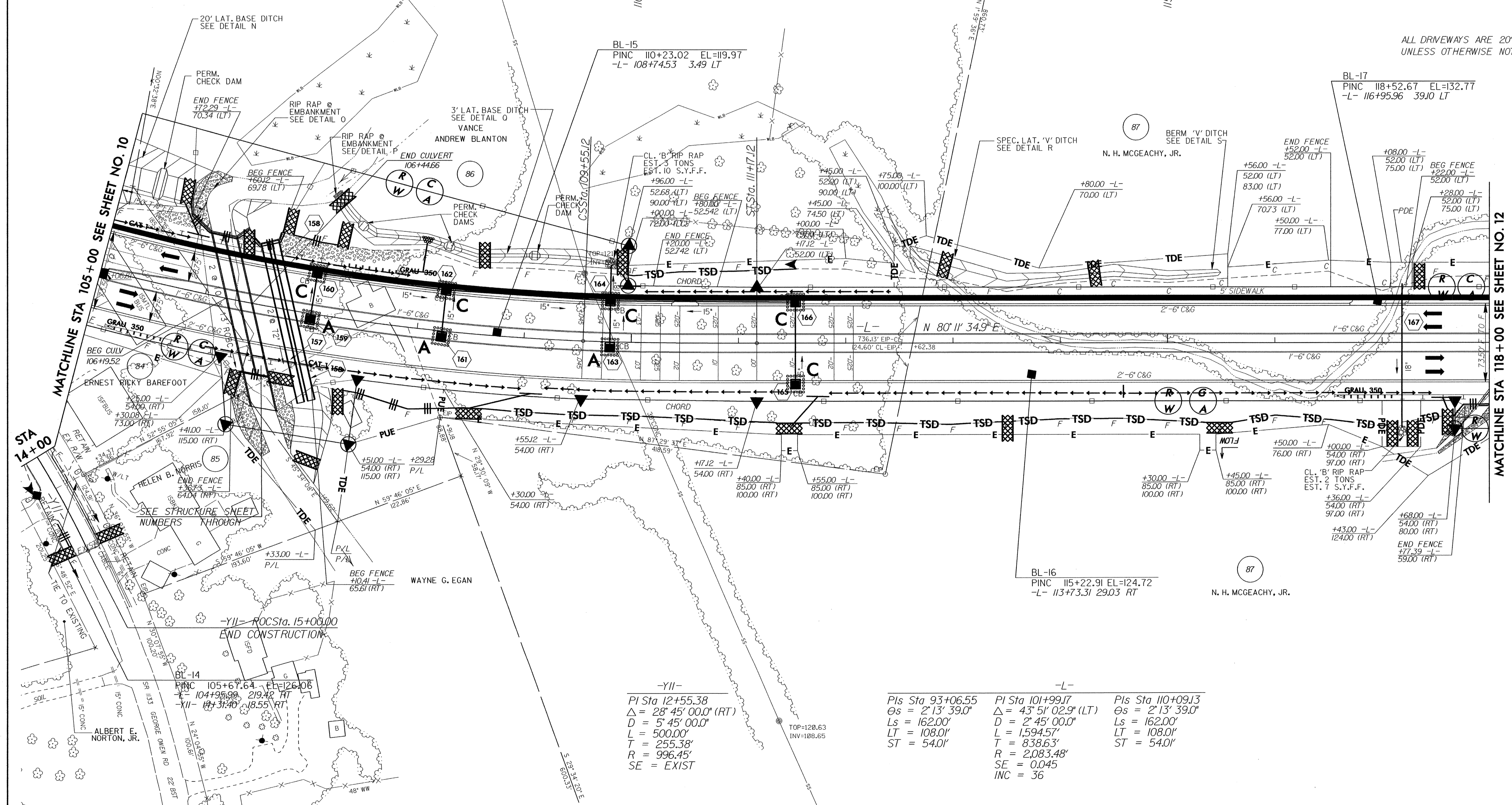
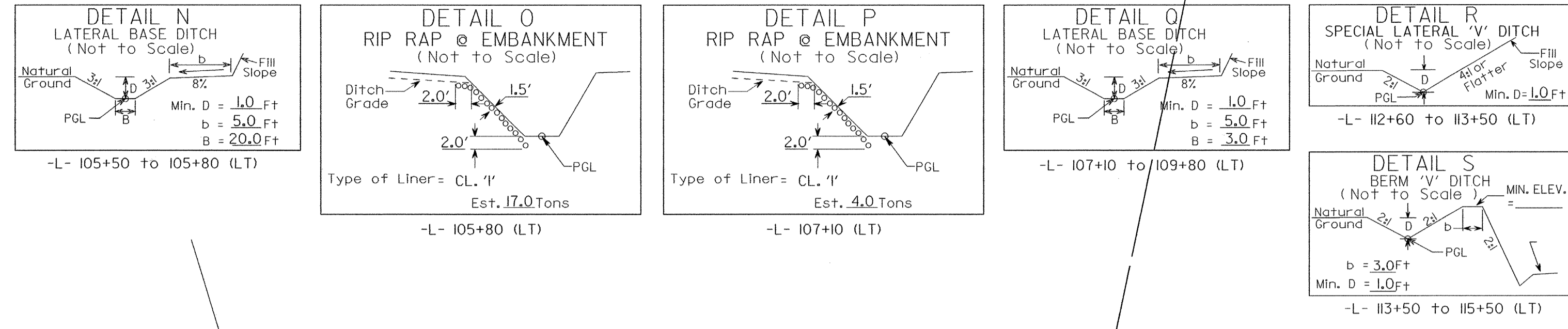


SEE SHEET 28 FOR -L- PROFILE
SEE SHEET 36 FOR -YII- PROFILE

PROJECT REFERENCE NO. U-0620		SHEET NO. EC-35/CONST.II	
RW SHEET NO.			
ROADWAY DESIGN ENGINEER		HYDRAULICS ENGINEER	



ALL DRIVEWAYS ARE 20' WIDE UNLESS OTHERWISE NOTED

MATCHLINE STA 105+00 SEE SHEET NO. 10

MATCHLINE STA 118+00 SEE SHEET NO. 12

-YII-
PI Sta 12+55.38
Δ = 28° 45' 00.0" (RT)
D = 5' 45' 00.0"
L = 500.00'
T = 255.38'
R = 996.45'
SE = EXIST

-L-
PIs Sta 93+06.55
Os = 2° 13' 39.0"
Ls = 162.00'
L = 108.01'
ST = 54.01'
PI Sta 101+99.17
Δ = 43° 51' 02.9" (LT)
D = 2' 45' 00.0"
Ls = 162.00'
L = 1594.57'
T = 838.63'
R = 2,083.48'
SE = 0.045
INC = 36
PIs Sta 110+09.13
Os = 2° 13' 39.0"
Ls = 162.00'
L = 108.01'
ST = 54.01'

- 5' MONOLITHIC ISLAND (KEYED IN) & SIDEWALK
- PAINT STRIPED LANE CLOSURE
- PAVEMENT REMOVAL