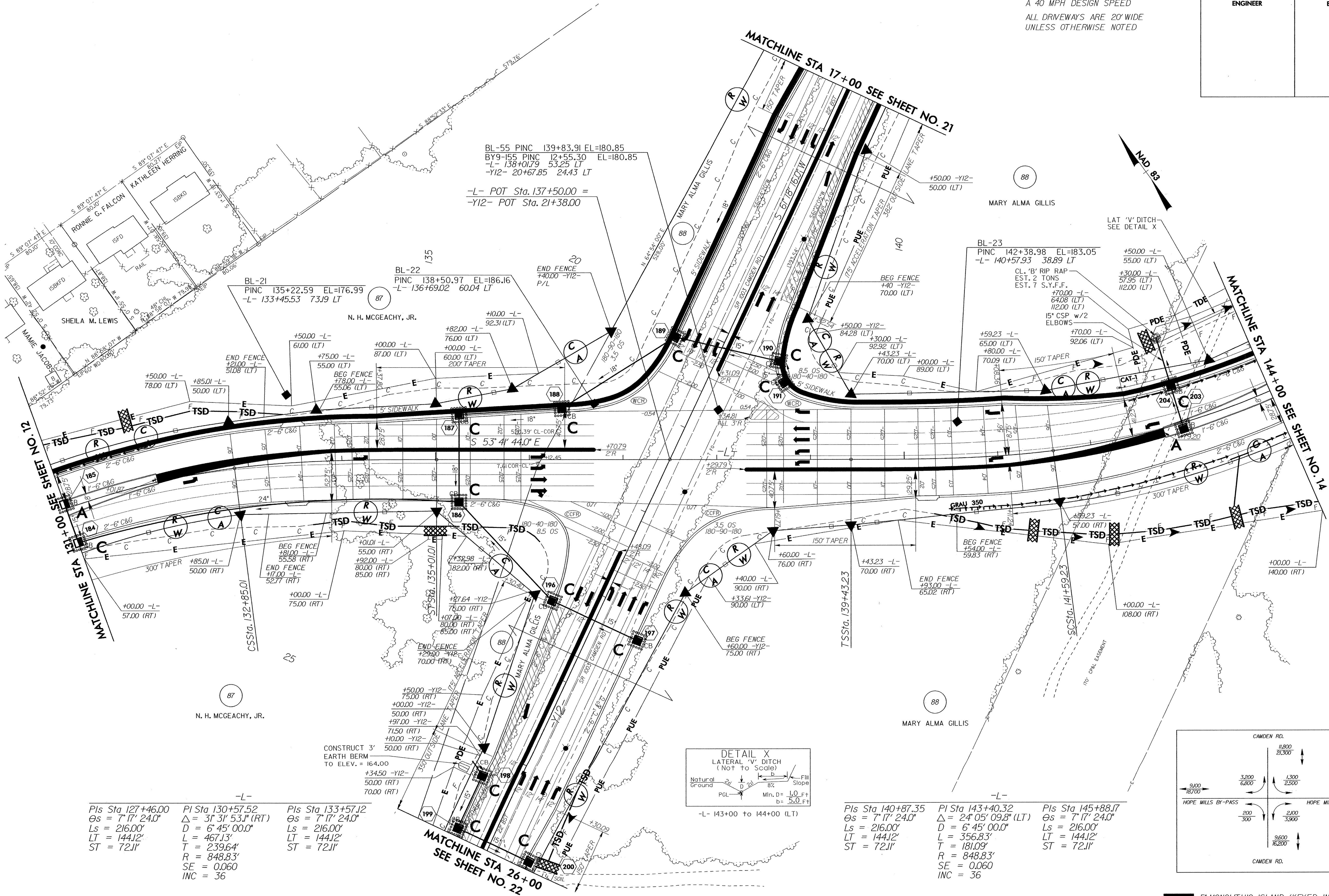
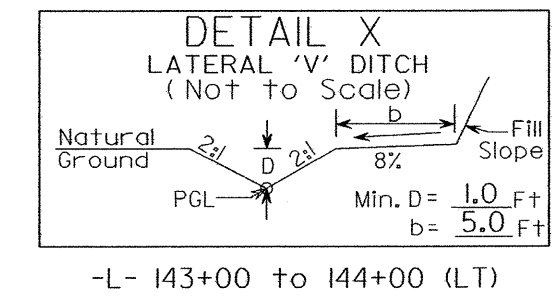


PROJECT REFERENCE NO. U-0620	SHEET NO. EC-37/CONST.13
RW SHEET NO.	
ROADWAY DESIGN ENGINEER	HYDRAULICS ENGINEER

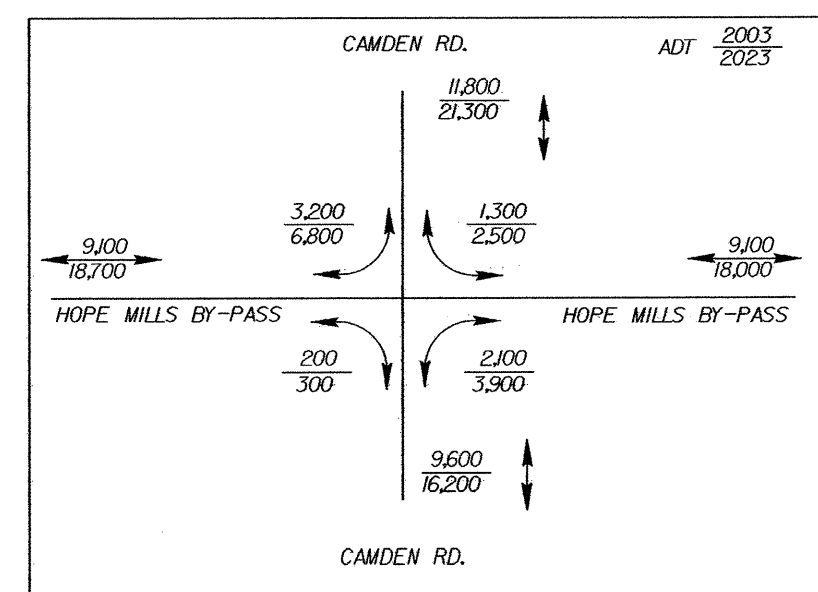
SEE SHEET 29 FOR -L- PROFILE
SEE SHEET 36 FOR -Y12- PROFILE
ALL TEMPORARY TAPERS HAVE
A 40 MPH DESIGN SPEED
ALL DRIVEWAYS ARE 20' WIDE
UNLESS OTHERWISE NOTED



-L-	-L-	-L-
Pls Sta 127+46.00	Pl Sta 130+57.52	Pls Sta 133+57.12
Øs = 7' 17" 24.0"	Δ = 3' 31" 53.1" (RT)	Øs = 7' 17" 24.0"
Ls = 216.00'	D = 6' 45" 00.0"	Ls = 216.00'
LT = 144.12'	L = 467.13'	LT = 144.12'
ST = 72.11'	T = 239.64'	ST = 72.11'
	R = 848.83'	
	SE = 0.060	
	INC = 36	



-L-	-L-	-L-
Pls Sta 140+87.35	Pl Sta 143+40.32	Pls Sta 145+88.17
Øs = 7' 17" 24.0"	Δ = 24' 05" 09.8" (LT)	Øs = 7' 17" 24.0"
Ls = 216.00'	D = 6' 45" 00.0"	Ls = 216.00'
LT = 144.12'	L = 356.83'	LT = 144.12'
ST = 72.11'	T = 181.09'	ST = 72.11'
	R = 848.83'	
	SE = 0.060	
	INC = 36	



- 5' MONOLITHIC ISLAND (KEYED IN) & SIDEWALK
- PAINT STRIPED LANE CLOSURE
- PAVEMENT REMOVAL