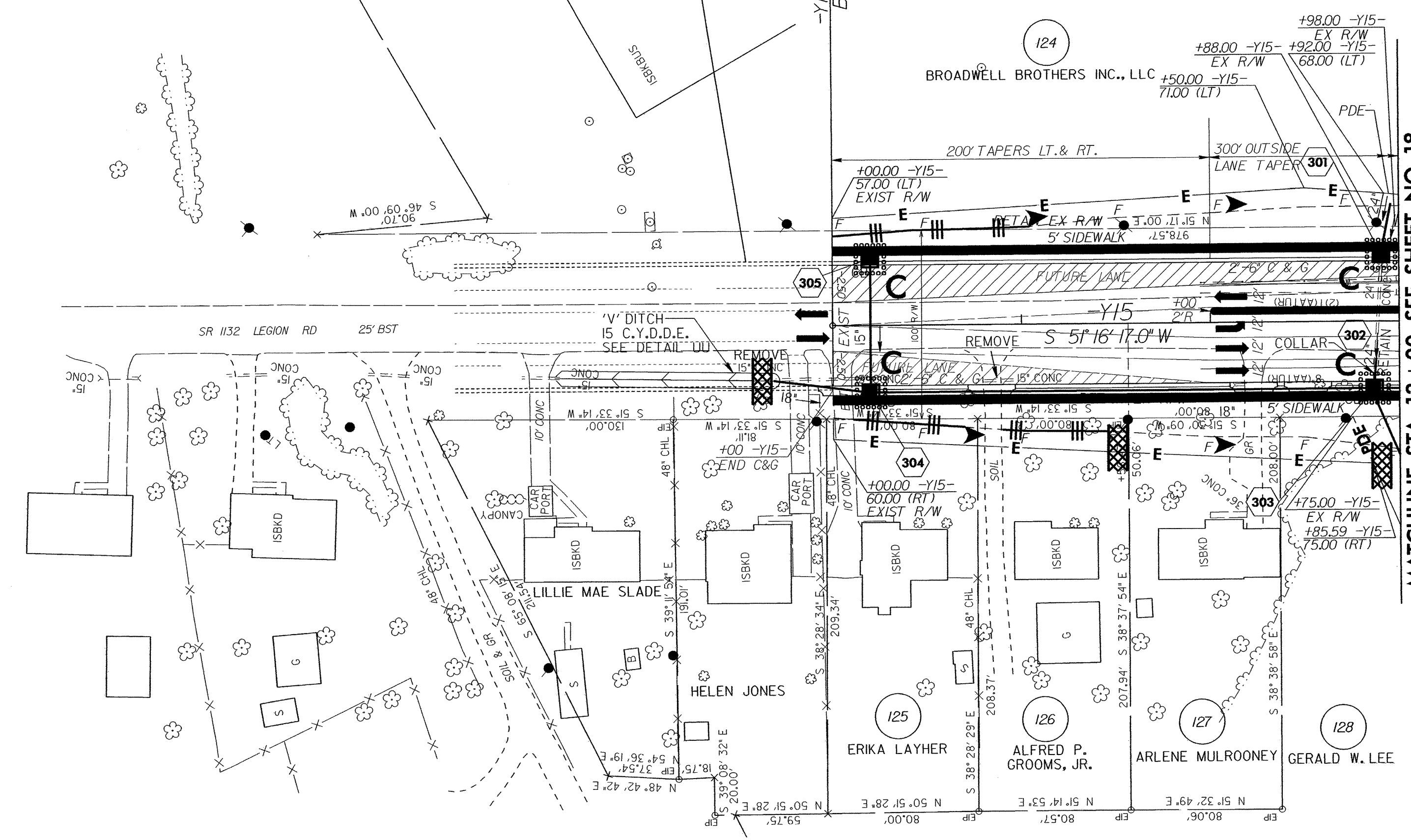
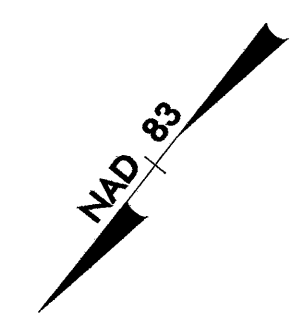


|                         |  |                     |  |
|-------------------------|--|---------------------|--|
| PROJECT REFERENCE NO.   |  | SHEET NO.           |  |
| U-0620                  |  | EC-47/CONST.23      |  |
| RW SHEET NO.            |  |                     |  |
| ROADWAY DESIGN ENGINEER |  | HYDRAULICS ENGINEER |  |

SEE SHEET 38 FOR -Y15- PROFILE

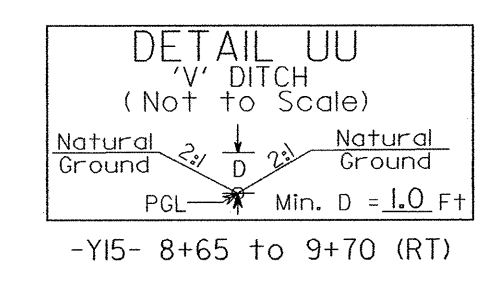
FUTURE PROJECT U-2809A

BY2-104  
POT 5+00.00 EL=216.23



MATCHLINE STA 13+00 SEE SHEET NO. 18

ALL DRIVEWAYS ARE 20' WIDE  
UNLESS OTHERWISE NOTED  
ALL TEMPORARY TAPERS HAVE  
A 40 MPH DESIGN SPEED



- 5' MONOLITHIC ISLAND (KEYED IN) & SIDEWALK
- PAINT STRIPED LANE CLOSURE
- PAVEMENT REMOVAL