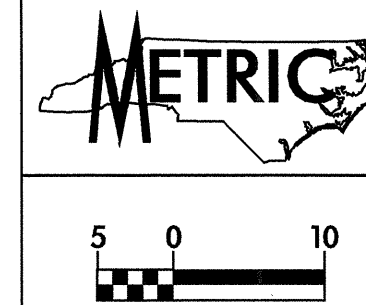


10/26/98

REVISIONS

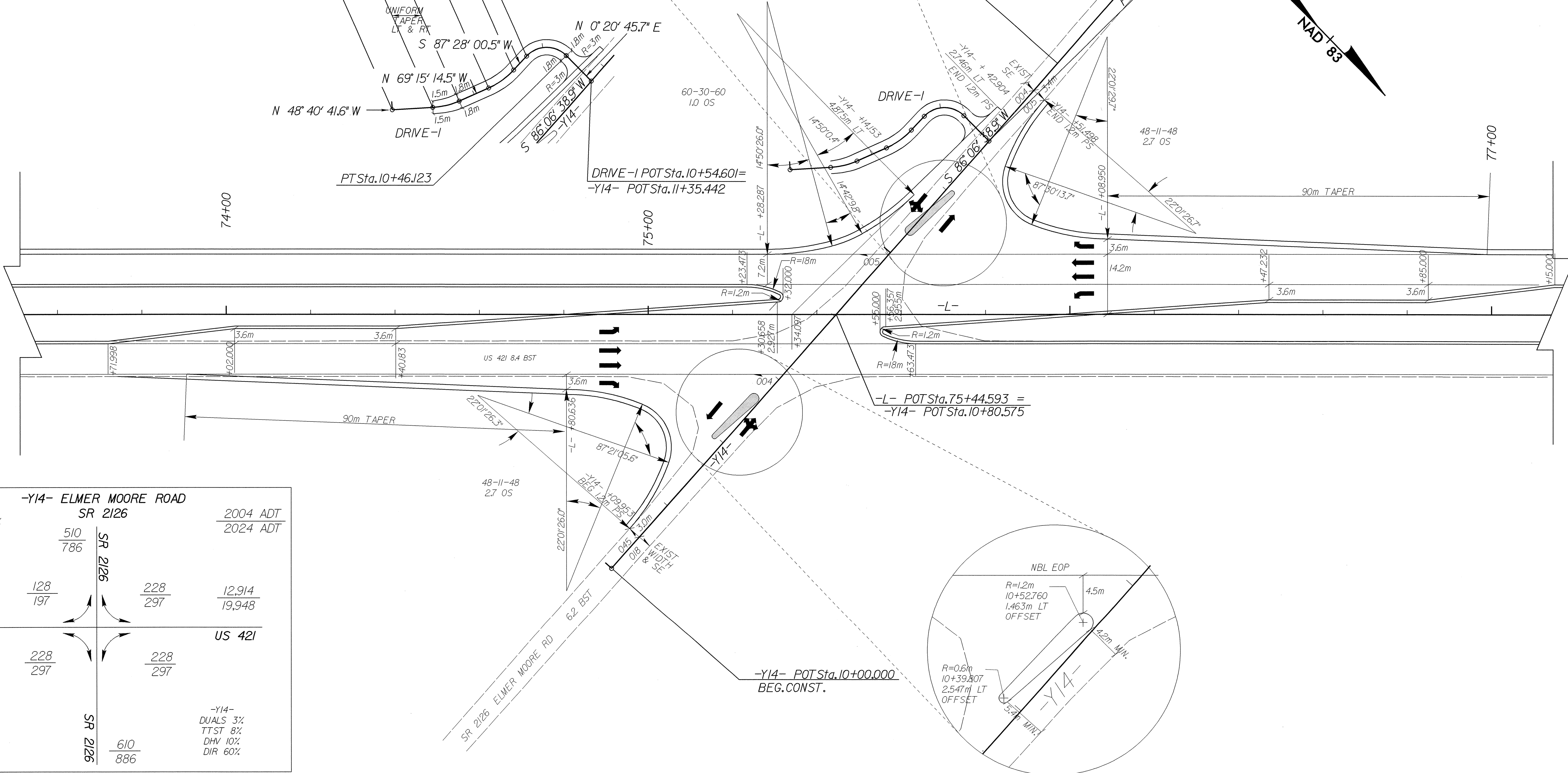


PROJECT REFERENCE NO.	R-2610B	SHEET NO.	2-6
R/W SHEET NO.			
ROADWAY DESIGN ENGINEER	16-23-04		
CONST. REV.			
R/W REV.			

DRIVE-I

PI Sta 10+12.922 PI Sta 10+27.467
 $\Delta = 20^\circ 34' 32.9''$ (LT) $\Delta = 23^\circ 16' 44.9''$ (LT)
 L = 6.464 L = 7.313
 T = 3.267 T = 3.708
 R = 18.000 R = 18.000

PI Sta 10+42.422
 $\Delta = 92^\circ 52' 45.2''$ (RT)
 L = 10.537
 T = 6.835
 R = 6.500



-Y14- DUALS 2% TTST 1% DHV 10% DIR 60%		SR 2126		2004 ADT
	510			2024 ADT
	786			
12,814	128	228	12,914	
19,848	197	297	19,948	
US 421			US 421	
-L- DUALS 4% TTST 13% DHV 10% DIR 60%	228	228		
	297	297		
			SR 2126	
			610	-Y14- DUALS 3% TTST 8% DHV 10% DIR 60%
			886	

03-JUN-2004 13:45:11 rshillingham