
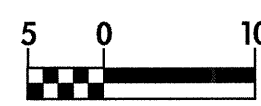
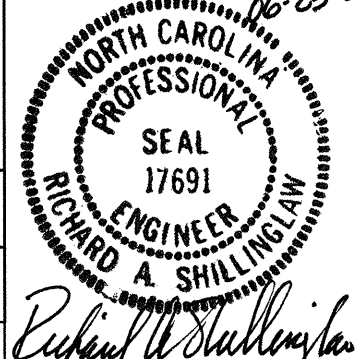
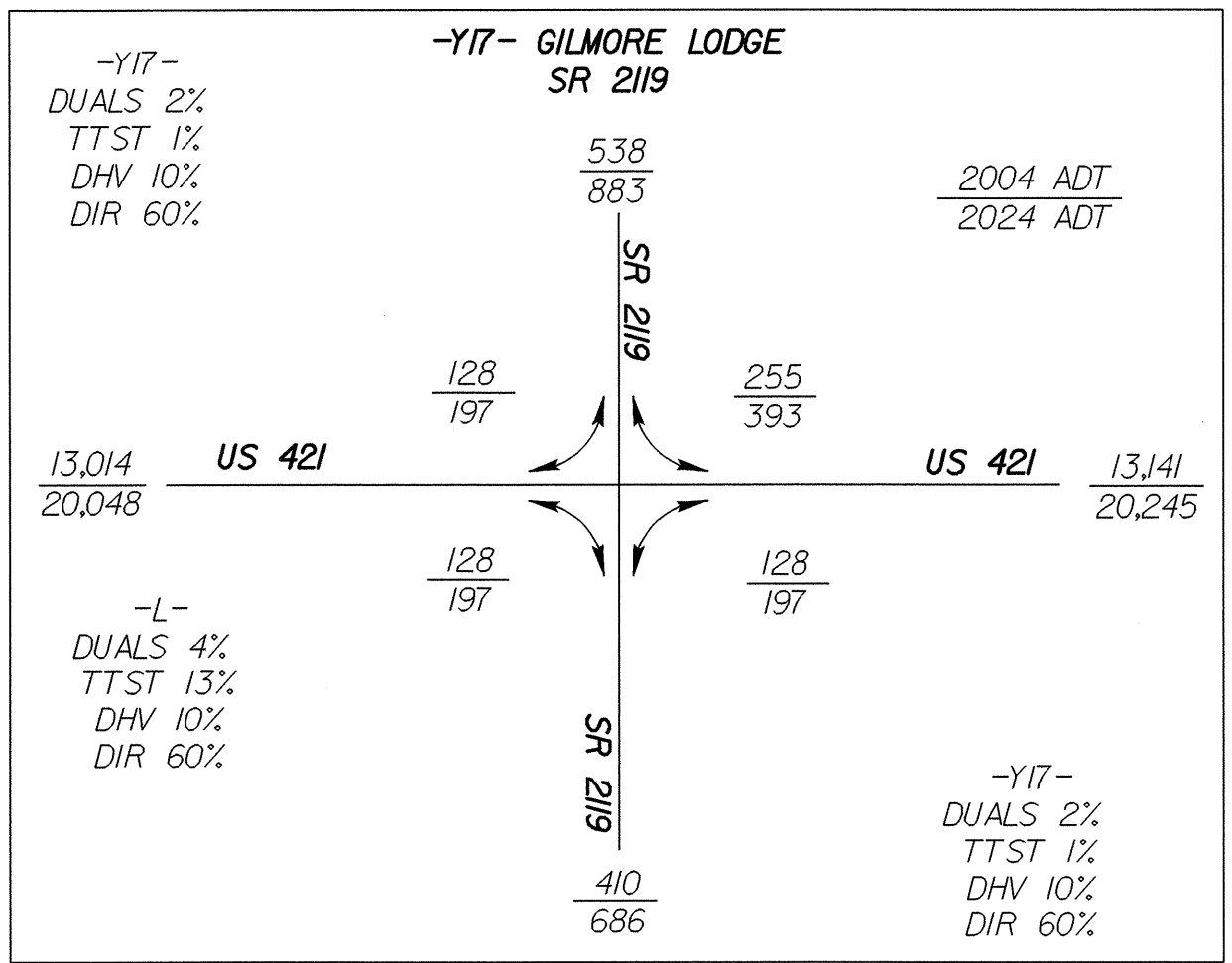
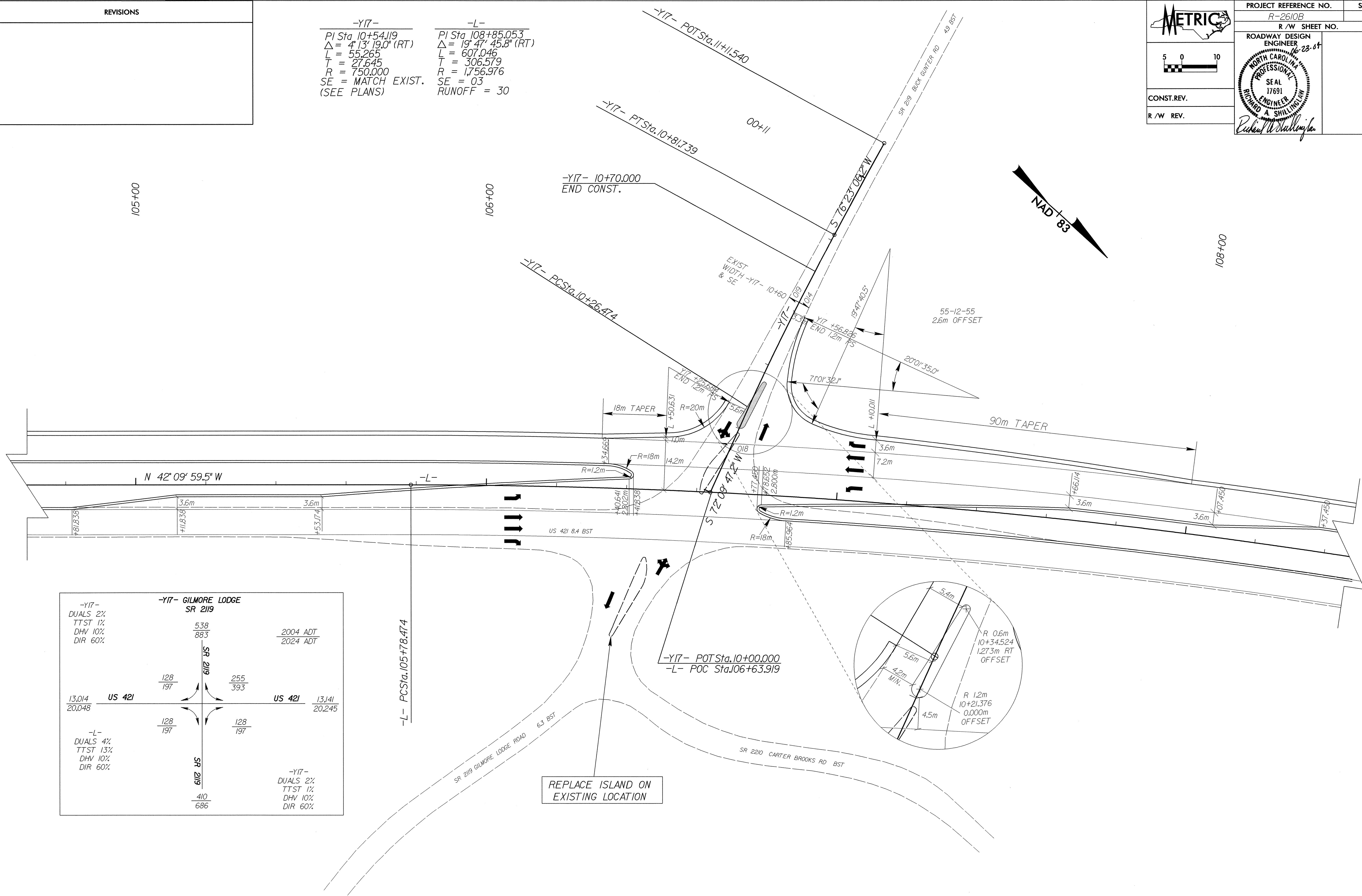


10/26/09

REVISIONS

-Y17-	-L-
PI Sta. 10+54.119	PI Sta. 108+85.053
$\Delta = 4' 13'' 19.0''$ (RT)	$\Delta = 19' 47'' 45.8''$ (RT)
L = 55.265	L = 607.046
T = 27.645	T = 306.579
R = 750.000	R = 1,756.976
SE = MATCH EXIST.	SE = 03
(SEE PLANS)	RUNOFF = 30

  CONST. REV.	PROJECT REFERENCE NO. R-2610B	SHEET NO. 2-K
	R/W SHEET NO.	
R/W REV.	ROADWAY DESIGN ENGINEER 10-23-09  <i>Richard A. Shillingham</i>	



REPLACE ISLAND ON EXISTING LOCATION

03-JUN-2004 13:47
R:\Projects\17-cti.pbx
R:\Projects\17-cti.pbx