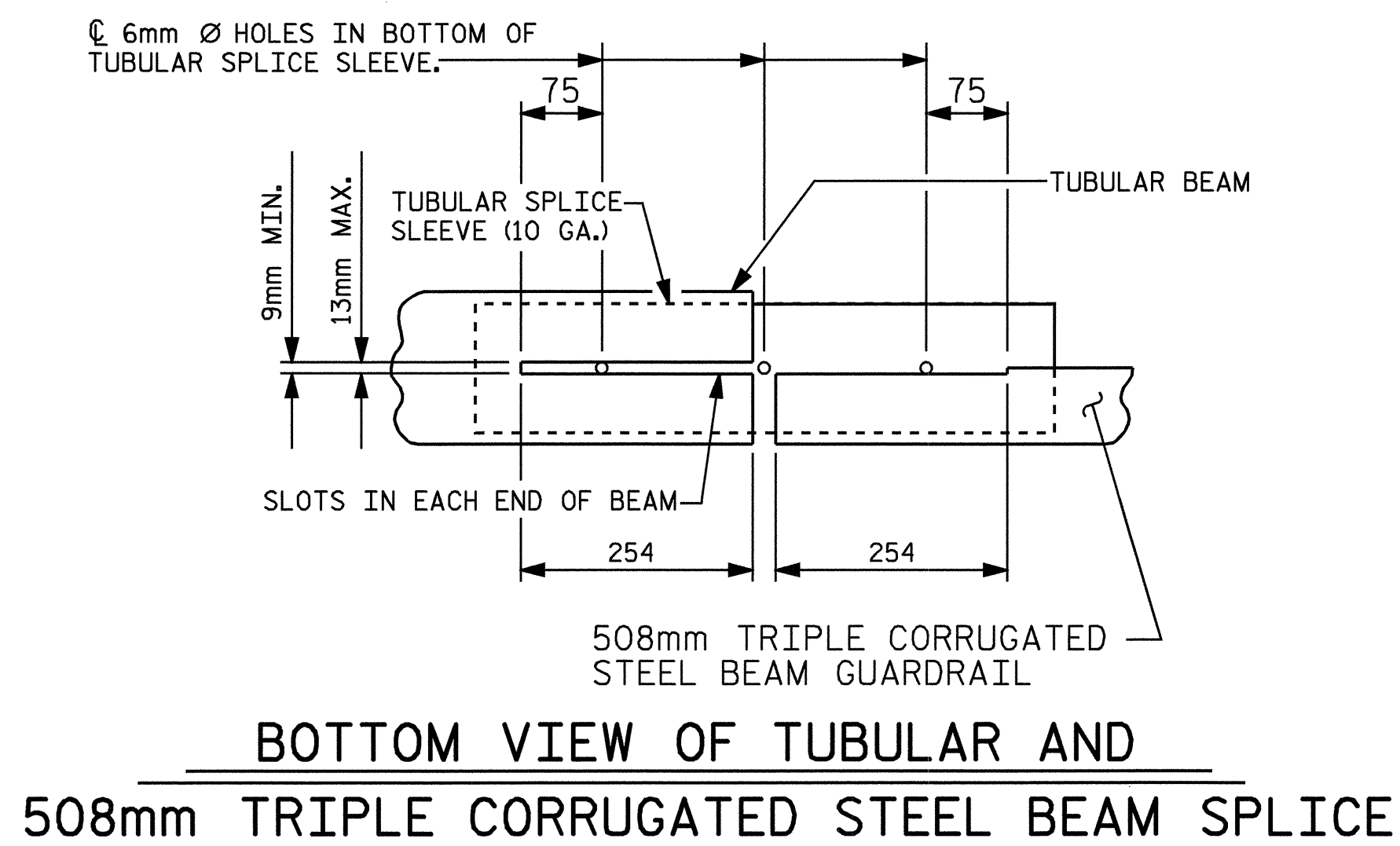
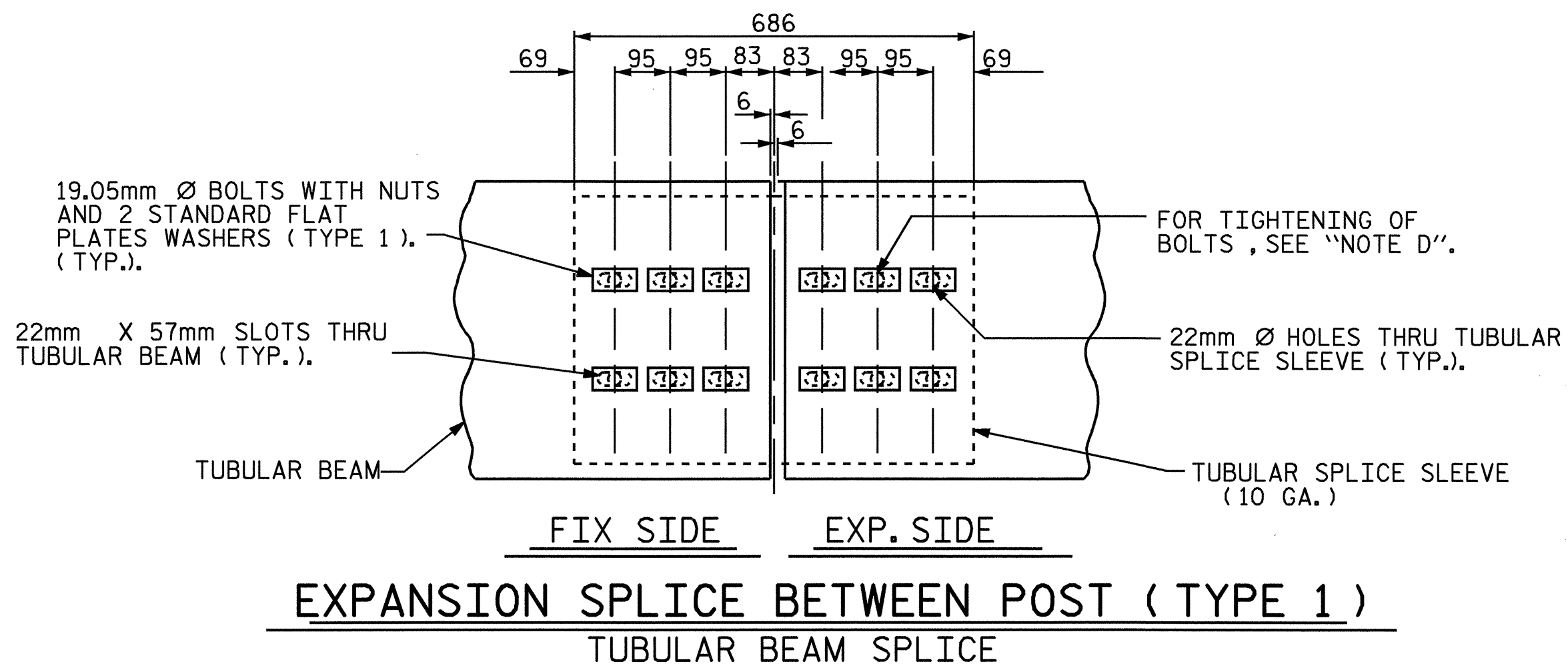
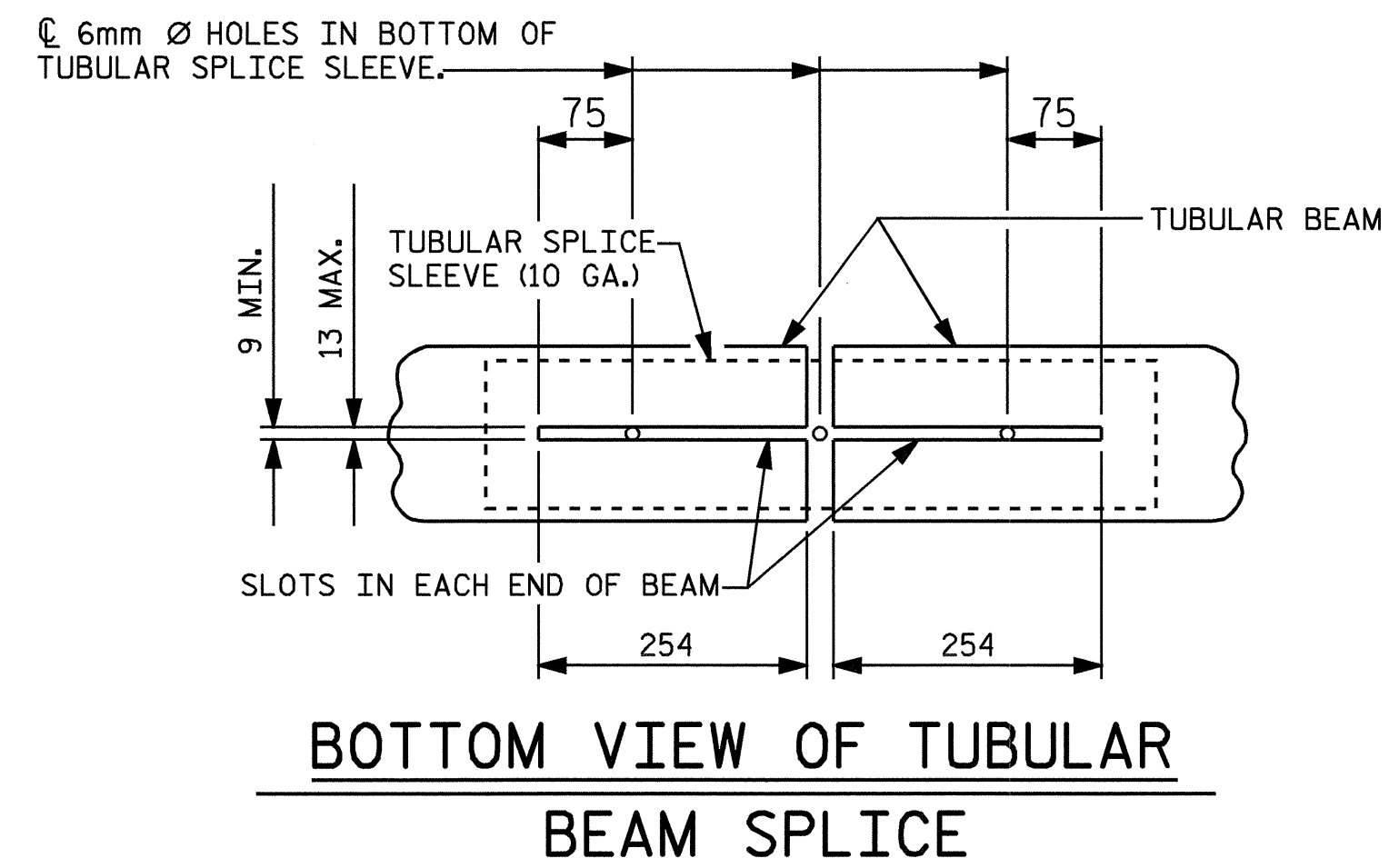
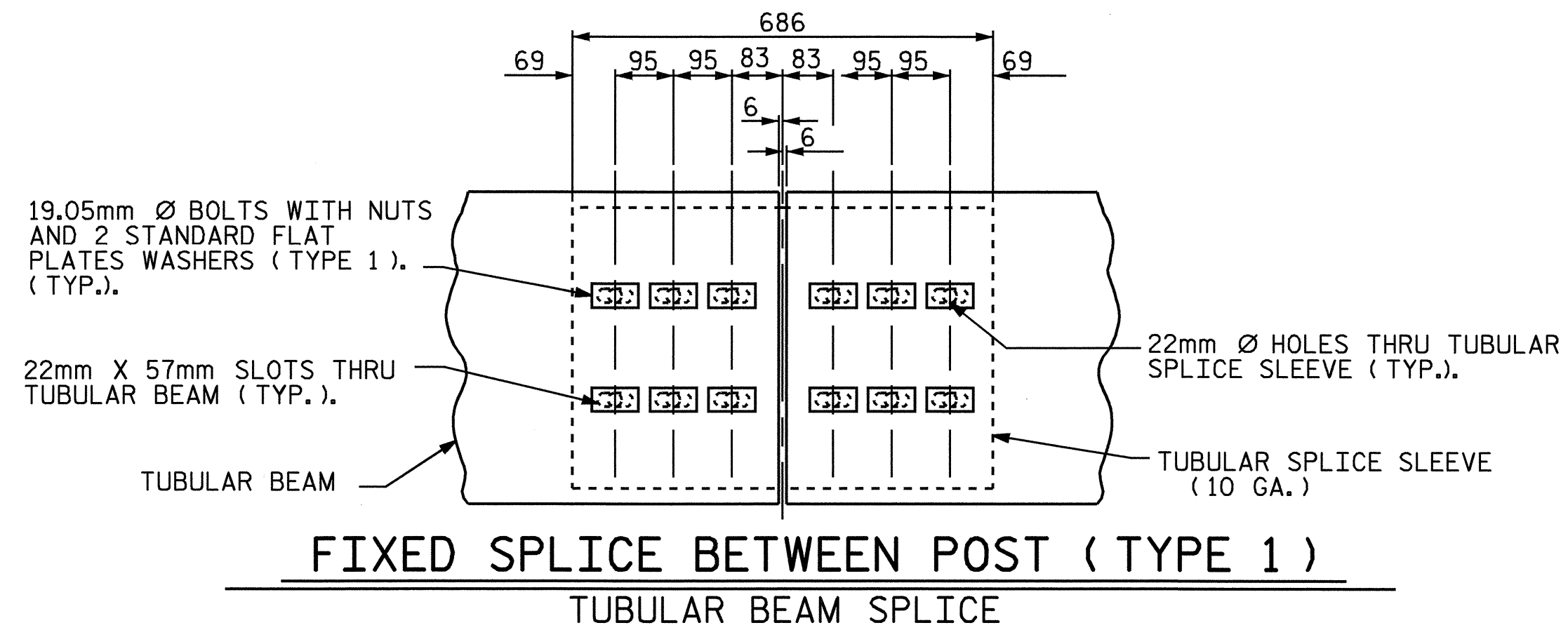


STATE	PROJECT NO.	SHEET NO.	TOTAL SHEETS
N. C.	R-2610B	2-HH	
F. A. PROJ. NO.			



**TABLE 1**  
DIMENSIONS FOR TYPE 2 THRU 5 EXPANSION SPLICE (TUBULAR BEAM SPLICE BETWEEN POSTS)

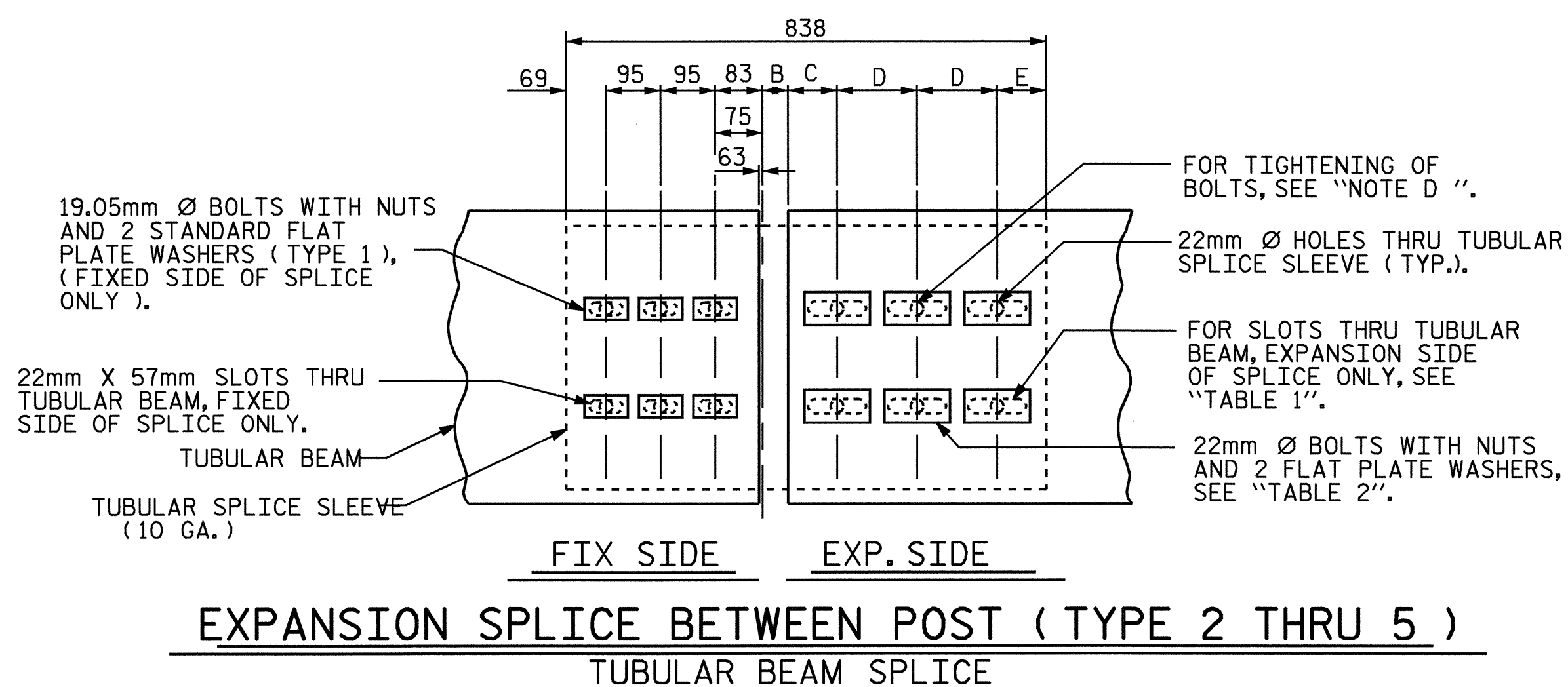
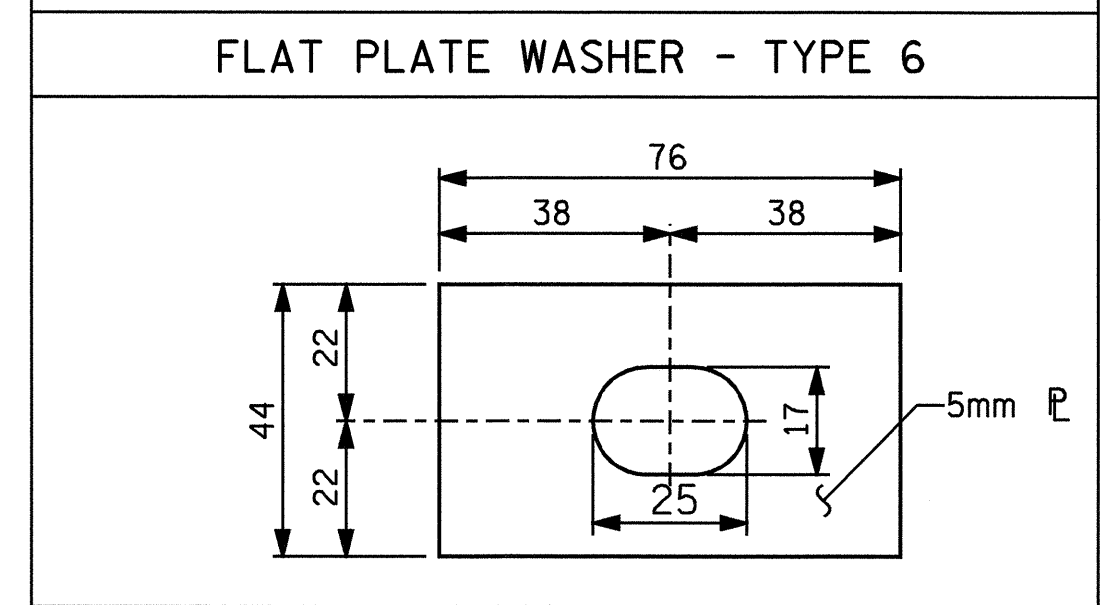
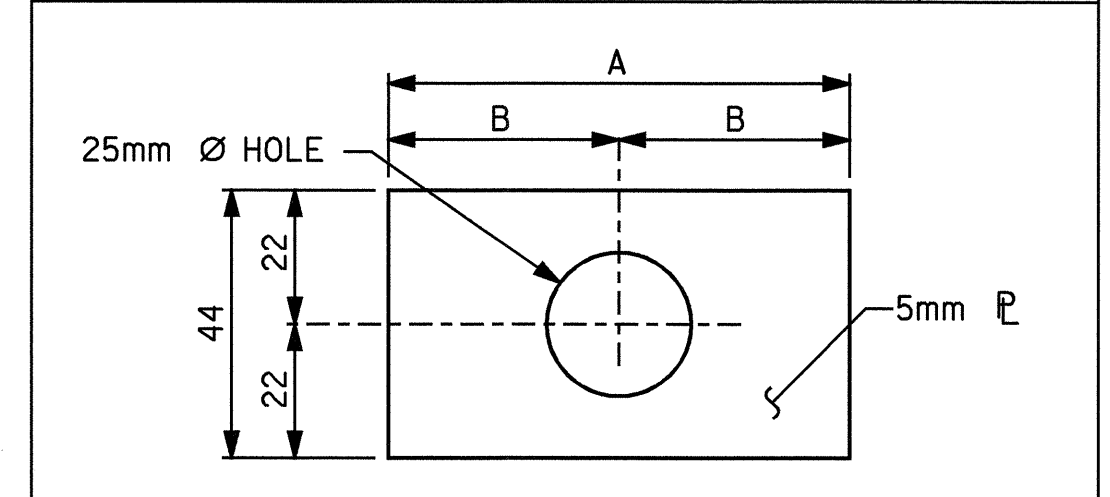
TYPE	2	3	4	5
A	838	940	1041	1118
B	@ 32° C	32	38	49
	@ 16° C	44	57	75
	@ 0° C	57	75	103
C	86	102	121	127
D	140	165	191	216
E	86	114	121	127
SLOT SIZE	25 X 102	25 X 127	24 X 152	24 X 178

**TABLE 2**  
FLAT PLATE WASHER DIMENSIONS

TYPE	DESCRIPTION	A	B
1	STANDARD WASHER	75	38

TYPE	USE WITH SPLICE	A	B
2	TYPE 2	114	57
3	TYPE 3	140	70
4	TYPE 4	165	83
5	TYPE 5	190	95



"NOTE D": BOLTS ON EXPANSION SIDE OF TUBULAR BEAM SPLICE SHALL BE TIGHTENED FINGER TIGHT. DOUBLE NUTS SHALL BE USED AND TIGHTENED AGAINST EACH OTHER TO PREVENT THE NUTS FROM BECOMING LOOSE ON THE BOLT.

PROJECT NO. R-2610B  
CHATHAM COUNTY

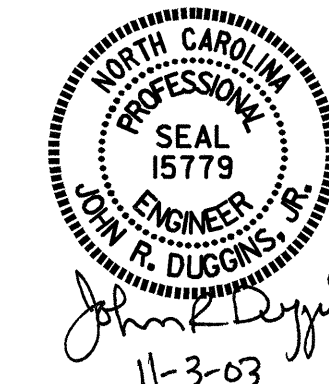
STATION: \_\_\_\_\_

SHEET 6 OF 6

STATE OF NORTH CAROLINA  
DEPARTMENT OF TRANSPORTATION  
RALEIGH

**DETAILS FOR RETROFIT OF EXISTING BRIDGE RAIL WITH TUBULAR BEAM GUARDRAIL**

REVISIONS						SHEET NO.
NO.	BY:	DATE:	NO.	BY:	DATE:	TOTAL SHEETS
1			3			
2			4			



ASSEMBLED BY: <u>M.E. POOLE</u>	DATE: <u>10/03</u>	<b>SPECIAL</b>
CHECKED BY: <u>J.R. DUGGINS</u>	DATE: <u>10/03</u>	
DRAWN BY: <u>N.M. RUFFIN</u>	DATE: <u>5/88</u>	<b>STANDARD</b>
CHECKED BY: <u>S.B. WILLIAMS</u>	DATE: <u>5/92</u>	