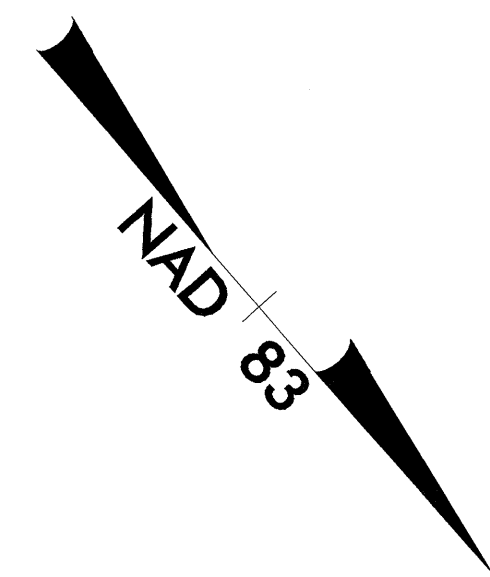
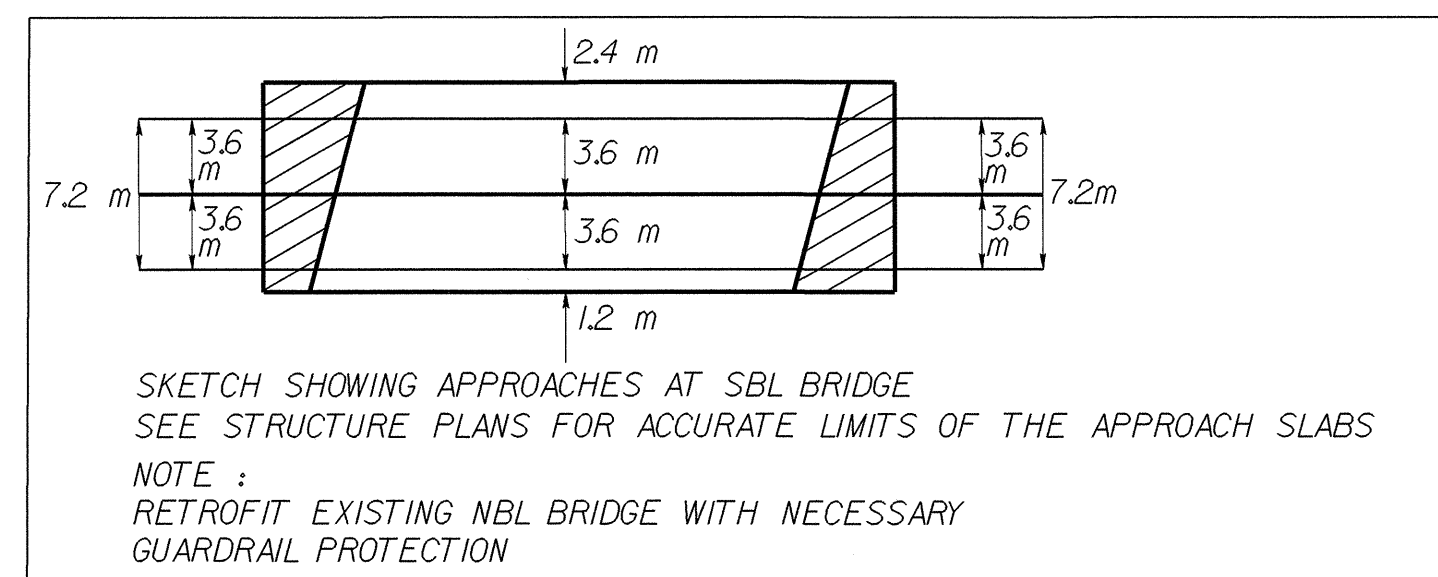
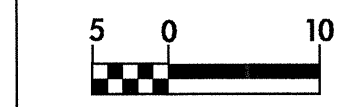


8/17/93

NOTE :  
G/R DESIGN WILL BE COMPLETED FOR OUTSIDE  
& MEDIAN SBL ONCE WE KNOW LIMITS OF SBL BRIDGE

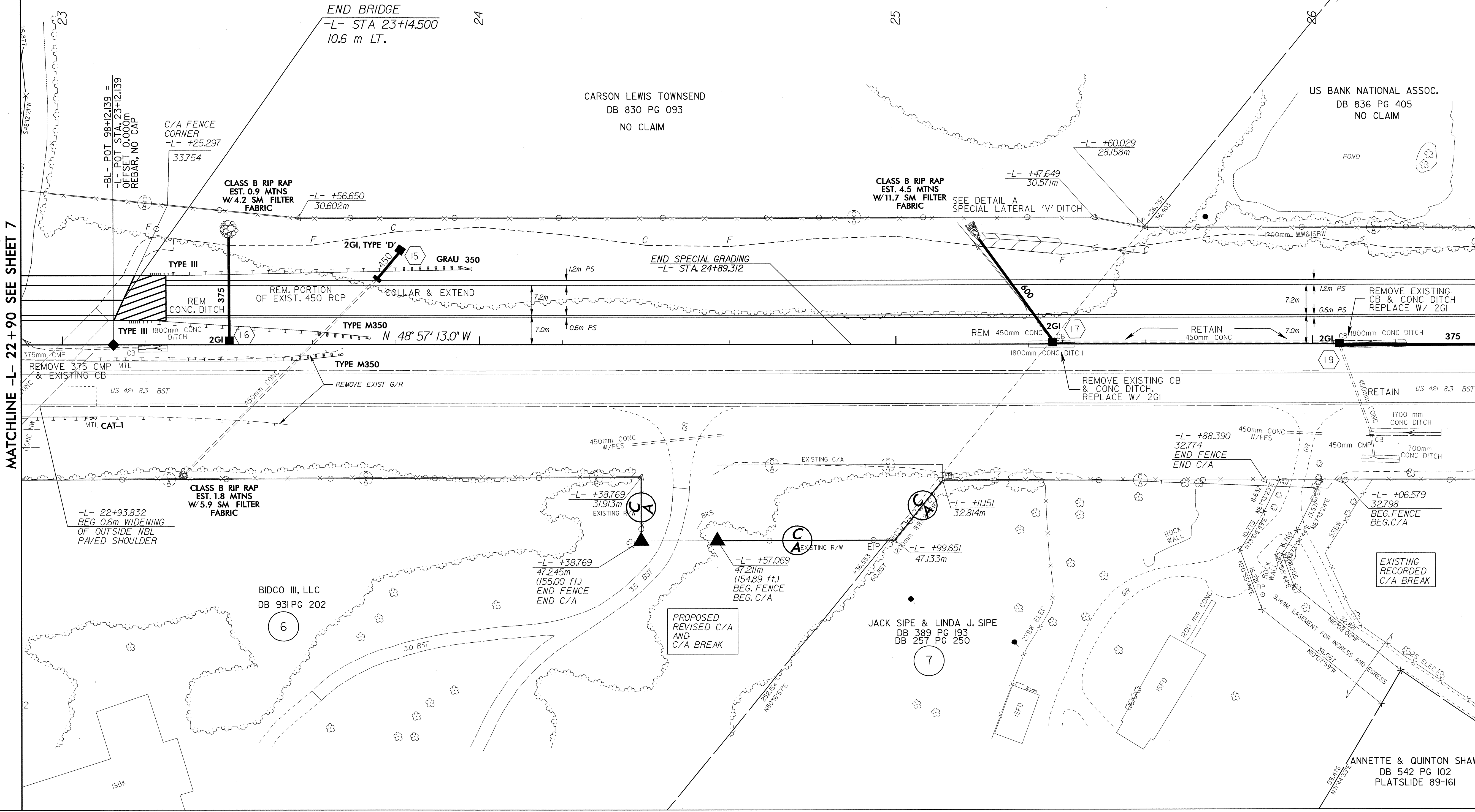
NOTE :  
RETROFIT EXISTING NBL BRIDGE WITH NECESSARY  
GUARDRAIL PROTECTION

PROJECT REFERENCE NO. R-2610 B		SHEET NO. 8
R/W SHEET NO.		
ROADWAY DESIGN ENGINEER NORTH CAROLINA PROFESSIONAL SEAL 17691 WILLIAM A. SHILLINGLAW	HYDRAULICS ENGINEER NORTH CAROLINA PROFESSIONAL SEAL 22100 STEPHEN R. MORAN	
CONST. REV.		
R/W REV.		



MATCHLINE -L- 22 + 90 SEE SHEET 7

MATCHLINE -L- 26 + 40 SEE SHEET 9



REVISIONS

19 MAY 2004 08:31  
Fishkill@law rd-03oce34