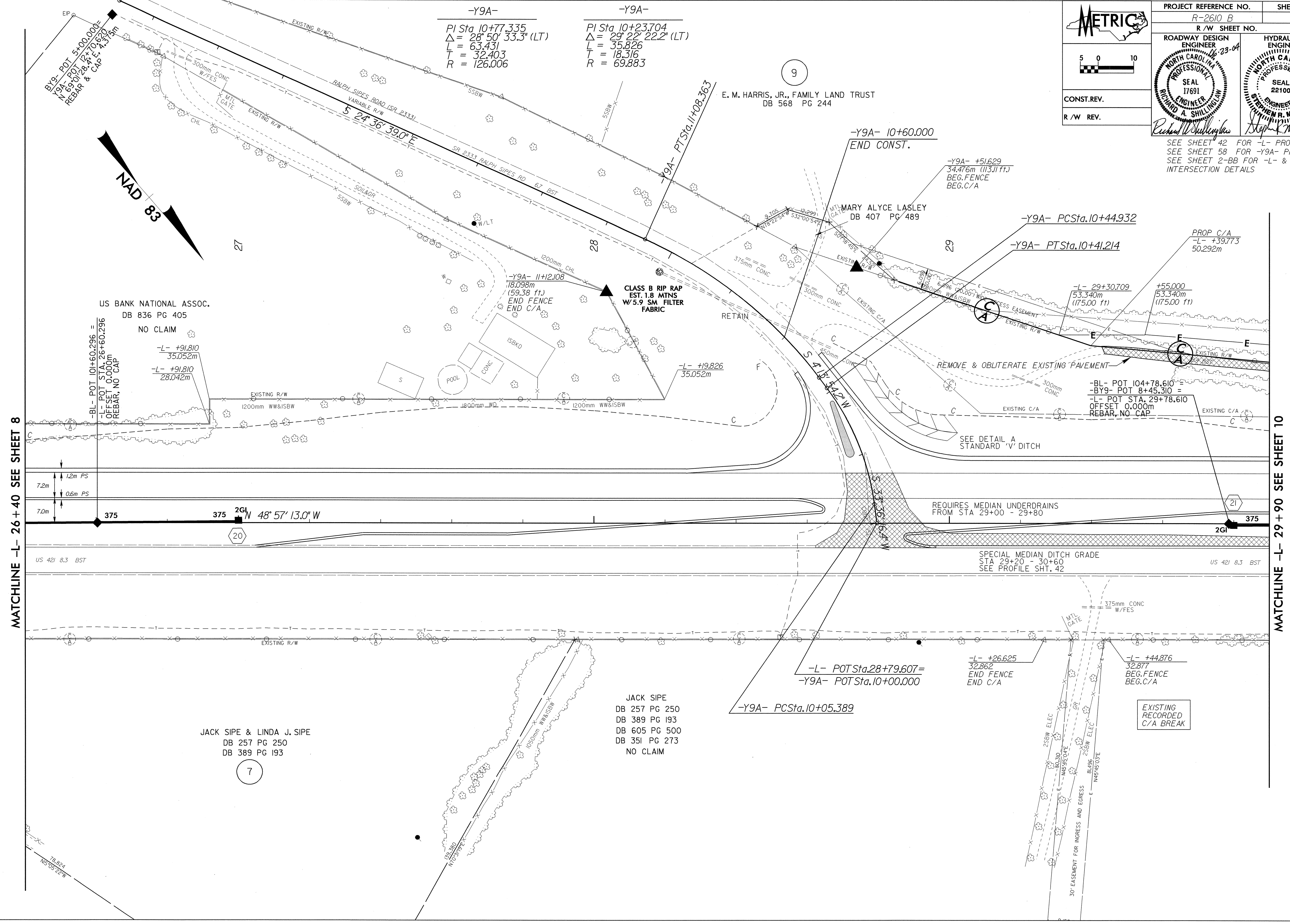


6/17/05

23-JUN-2004 10:25
RICHARD A. SHILLINGHAM
R 0007117

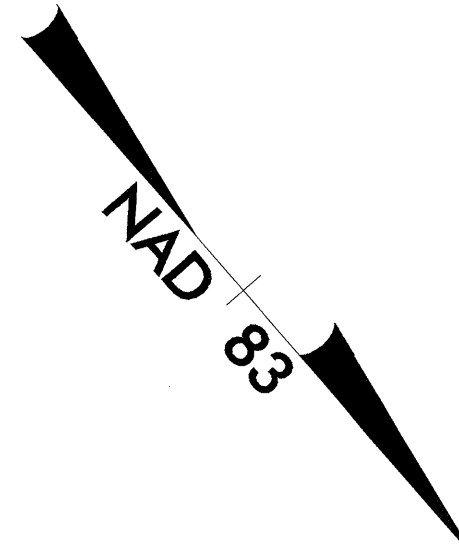
	PROJECT REFERENCE NO.	R-2610 B	SHEET NO.	9
	R/W SHEET NO.			
	ROADWAY DESIGN ENGINEER	NORTH CAROLINA PROFESSIONAL ENGINEER SEAL 17691 RICHARD A. SHILLINGHAM		
	HYDRAULICS ENGINEER	NORTH CAROLINA PROFESSIONAL ENGINEER SEAL 22100 STEPHEN R. MORROW		
CONST. REV.				
R/W REV.				

SEE SHEET 42 FOR -L- PROFILE
SEE SHEET 58 FOR -Y9A- PROFILE
SEE SHEET 2-BB FOR -L- & -Y9A- INTERSECTION DETAILS



-Y9A-
 PI Sta 10+77.335
 $\Delta = 28^\circ 50' 33.3''$ (LT)
 L = 63.431
 T = 32.403
 R = 126.006

-Y9A-
 PI Sta 10+23.704
 $\Delta = 29^\circ 22' 22.2''$ (LT)
 L = 35.826
 T = 18.316
 R = 69.883



MATCHLINE -L- 26+40 SEE SHEET 8

MATCHLINE -L- 29+90 SEE SHEET 10

REVISIONS

JACK SIPE & LINDA J. SIPE
 DB 257 PG 250
 DB 389 PG 193

JACK SIPE
 DB 257 PG 250
 DB 389 PG 193
 DB 605 PG 500
 DB 351 PG 273
 NO CLAIM

US BANK NATIONAL ASSOC.
 DB 836 PG 405
 NO CLAIM

-BL- POT 101+60.296 =
 -L- POT STA 26+60.296 =
 OFFSET 0.000m
 REBAR, NO CAP

-L- +91.810
 35.052m

-L- +91.810
 28.042m

-Y9A- 11+12.108
 18.098m
 (59.38 ft.)
 END FENCE
 END C/A

CLASS B RIP RAP
 EST. 1.8 MTNS
 W/ 5.9 SM FILTER
 FABRIC

-L- +91.826
 35.052m

-Y9A- 10+60.000
 END CONST.

-Y9A- +51.629
 34.476m (113.11 ft.)
 BEG. FENCE
 BEG. C/A

-Y9A- PCSta.10+44.932

-Y9A- PTSta.10+41.214

-L- 29+30.709
 53.340m
 (175.00 ft)

+55.000
 53.340m
 (175.00 ft)

-BL- POT 104+78.610 =
 -BY9- POT 8+45.310 =
 -L- POT STA 29+78.610
 OFFSET 0.000m
 REBAR, NO CAP

REQUIRES MEDIAN UNDERDRAINS
 FROM STA 29+00 - 29+80

SPECIAL MEDIAN DITCH GRADE
 STA 29+20 - 30+60
 SEE PROFILE SHT. 42

-L- POT Sta.28+79.607 =
 -Y9A- POT Sta.10+00.000

-Y9A- PCSta.10+05.389

-L- +26.625
 32.862
 END FENCE
 END C/A

-L- +44.876
 32.877
 BEG. FENCE
 BEG. C/A

EXISTING
 RECORDED
 C/A BREAK

78.874
 N0705127W