

-BL-	-YII-	-YII-	-L-
PI Sta 121+50.605 D = 10° 17' 32.9" (RT) L = 315.619 T = 158.235 R = 1,756.976	PI Sta 10+41.751 Δ = 19° 27' 01.7" (RT) L = 27.242 T = 13.753 R = 80.247	PI Sta 11+29.869 Δ = 60° 42' 56.9" (LT) L = 16.539 T = 9.141 R = 15.607	PI Sta 46+50.605 Δ = 10° 17' 32.9" (RT) L = 315.619 T = 158.235 R = 1,756.976 SE = 03 RUNOFF = 30

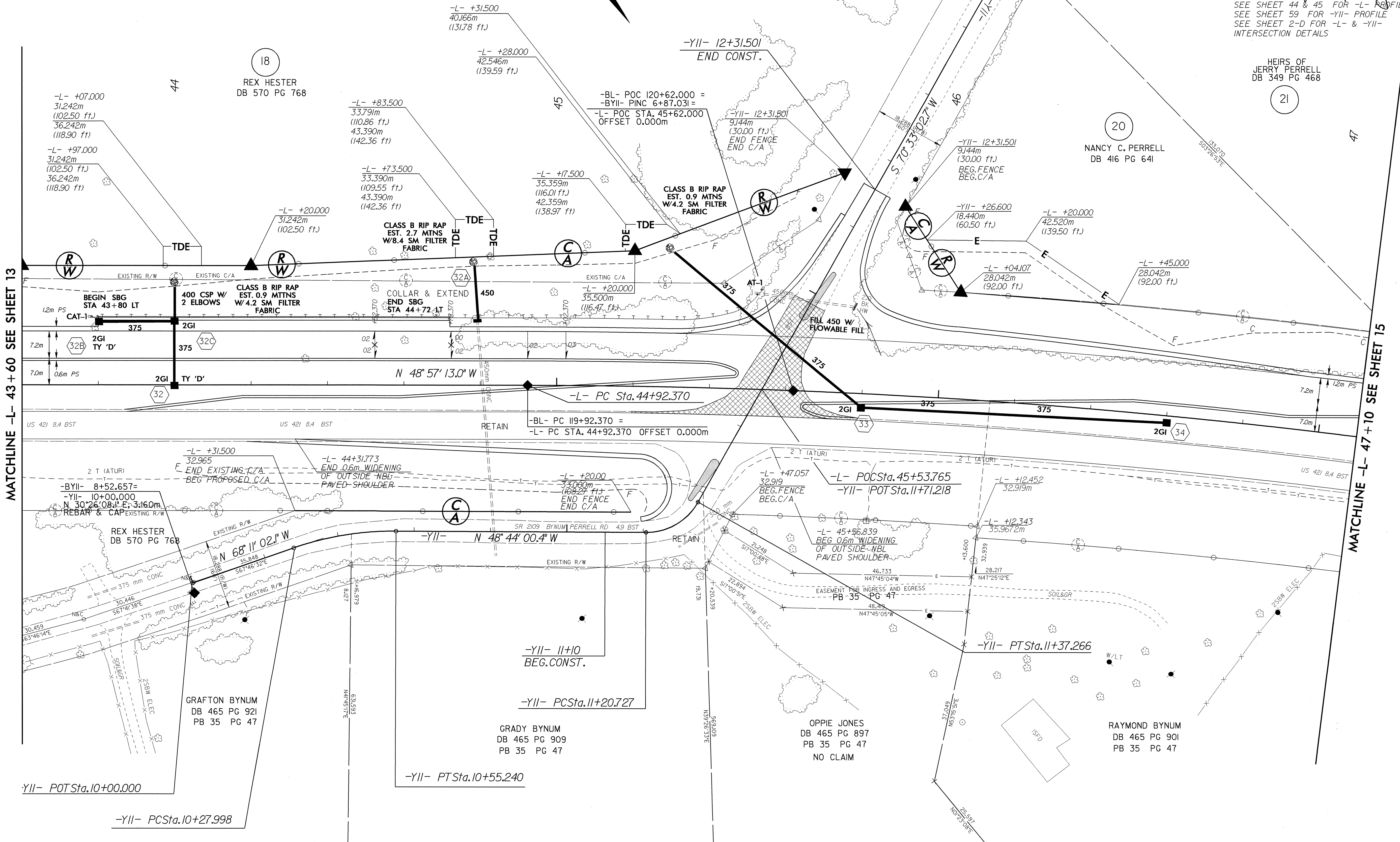
METRIC

5 0 10

CONST. REV.
R/W REV.

PROJECT REFERENCE NO. R-2610 B	SHEET NO. 14
R/W SHEET NO.	
ROADWAY DESIGN ENGINEER RICHARD A. SHILLINEAU SEAL 17691	HYDRAULICS ENGINEER STEPHEN R. MORGAN SEAL 22100

SEE SHEET 44 & 45 FOR -L- PROFILE
SEE SHEET 59 FOR -YII- PROFILE
SEE SHEET 2-D FOR -L- & -YII- INTERSECTION DETAILS



REVISIONS

MATCHLINE -L- 43 + 60 SEE SHEET 13

MATCHLINE -L- 47 + 10 SEE SHEET 15

-YII- POT Sta. 10+00.000

-YII- PC Sta. 10+27.998

-YII- PT Sta. 10+55.240

GRADY BYNUM
DB 465 PG 909
PB 35 PG 47

OPPIE JONES
DB 465 PG 897
PB 35 PG 47
NO CLAIM

RAYMOND BYNUM
DB 465 PG 901
PB 35 PG 47

HEIRS OF
JERRY PERRELL
DB 349 PG 468

NANCY C. PERRELL
DB 416 PG 641

REX HESTER
DB 570 PG 768

GRAFTON BYNUM
DB 465 PG 921
PB 35 PG 47

26-MAR-2004 08:42
R:\Projects\2610 B\Drawings\AT\141717.dwg