

METRIC

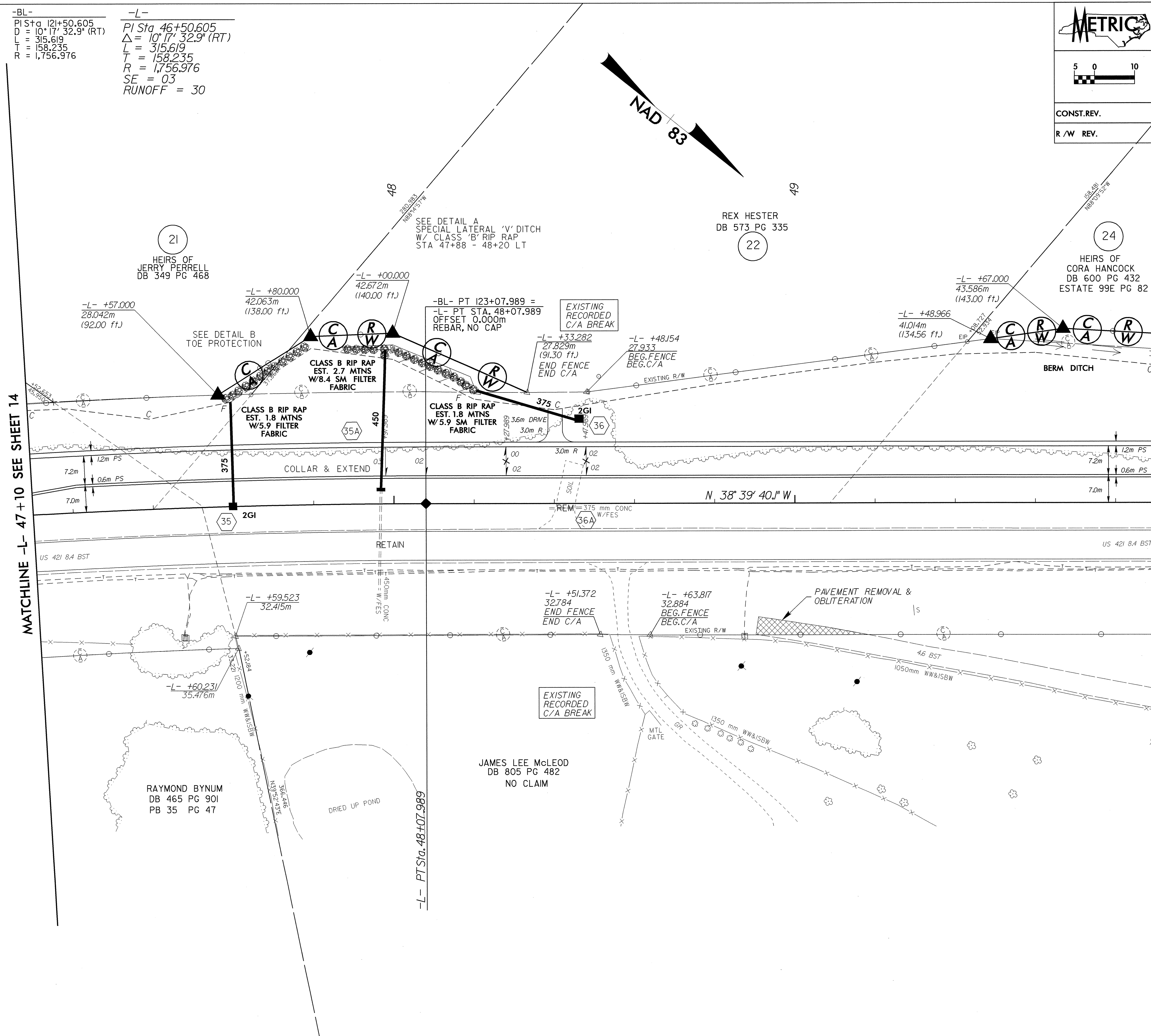
5 0 10

CONST. REV.

R/W REV.

PROJECT REFERENCE NO. R-2610 B	SHEET NO. 15
R/W SHEET NO.	
ROADWAY DESIGN ENGINEER RICHARD A. SHILLING SEAL 17691	HYDRAULICS ENGINEER SEAL 22100

SEE SHEET 45 FOR -L- PROFILE
SEE SHEET 2-D FOR -L- & -YII- INTERSECTION DETAILS



MATCHLINE -L- 47 +10 SEE SHEET 14

MATCHLINE -L- 49 +90 SEE SHEET 16

REVISIONS

23-JUN-2004 10:25
R:\Projects\2610 B\Drawings\15.dwg
8/17/99