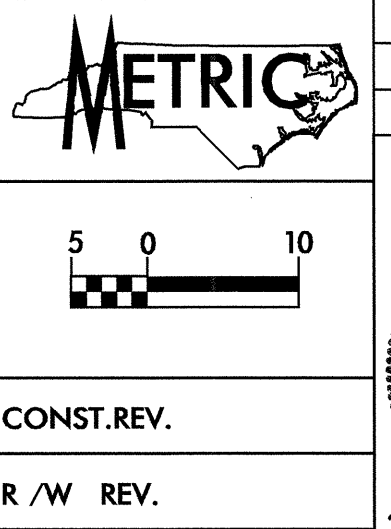


DRIVE - I

| | | |
|--------------------------------------|--------------------------------------|--------------------------------------|
| PI Sta 10+12.922 | PI Sta 10+27.467 | PI Sta 10+42.422 |
| $\Delta = 20^{\circ} 34' 32.9" (LT)$ | $\Delta = 23^{\circ} 16' 44.9" (LT)$ | $\Delta = 92^{\circ} 52' 45.2" (RT)$ |
| L = 6.464 | L = 7.313 | L = 10.537 |
| T = 3.267 | T = 3.708 | T = 6.835 |
| R = 18.000 | R = 18.000 | R = 6.500 |



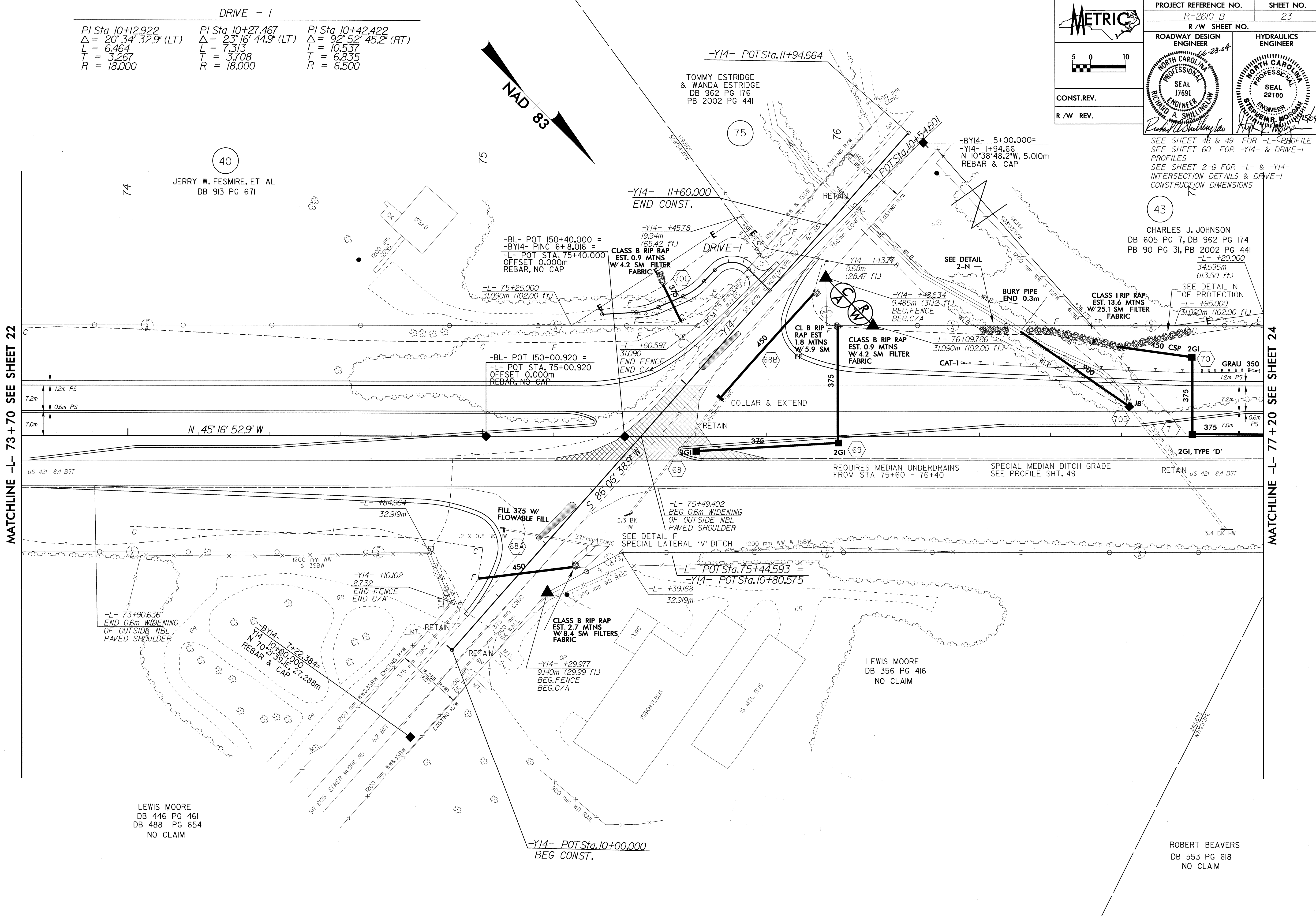
| | |
|-------------------------------------|---------------------|
| PROJECT REFERENCE NO. R-2610 B | SHEET NO. 23 |
| R/W SHEET NO. | |
| ROADWAY DESIGN ENGINEER 16-23-04 | HYDRAULICS ENGINEER |
| | |
| CONST. REV. | |
| R/W REV. | |

SEE SHEET 48 & 49 FOR -L- E-BPROFILE
SEE SHEET 60 FOR -Y14- & DRIVE-I
PROFILES
SEE SHEET 2-G FOR -L- & -Y14-
INTERSECTION DETAILS & DRIVE-I
CONSTRUCTION DIMENSIONS

43
CHARLES J. JOHNSON
DB 605 PG 7, DB 962 PG 174
PB 90 PG 31, PB 2002 PG 441

MATCHLINE -L- 73+70 SEE SHEET 22

MATCHLINE -L- 77+20 SEE SHEET 24



REVISIONS

8/17/29

26-MAR-2004 08:45
ASB:11111111 AT R0187117

LEWIS MOORE
DB 446 PG 461
DB 488 PG 654
NO CLAIM

LEWIS MOORE
DB 356 PG 416
NO CLAIM

ROBERT BEAVERS
DB 553 PG 618
NO CLAIM

