

-BL-
 PI Sta. 162+10.371
 D = 3° 06' 53.4" (RT)
 L = 190.456
 T = 95.252
 R = 3,503.352

-L-
 PI Sta. 87+10.370
 Δ = 3° 06' 53.4" (RT)
 L = 190.456
 T = 95.252
 R = 3,503.352
 SE = 02
 RUNOFF = 18

METRIC

5 0 10

CONST. REV.

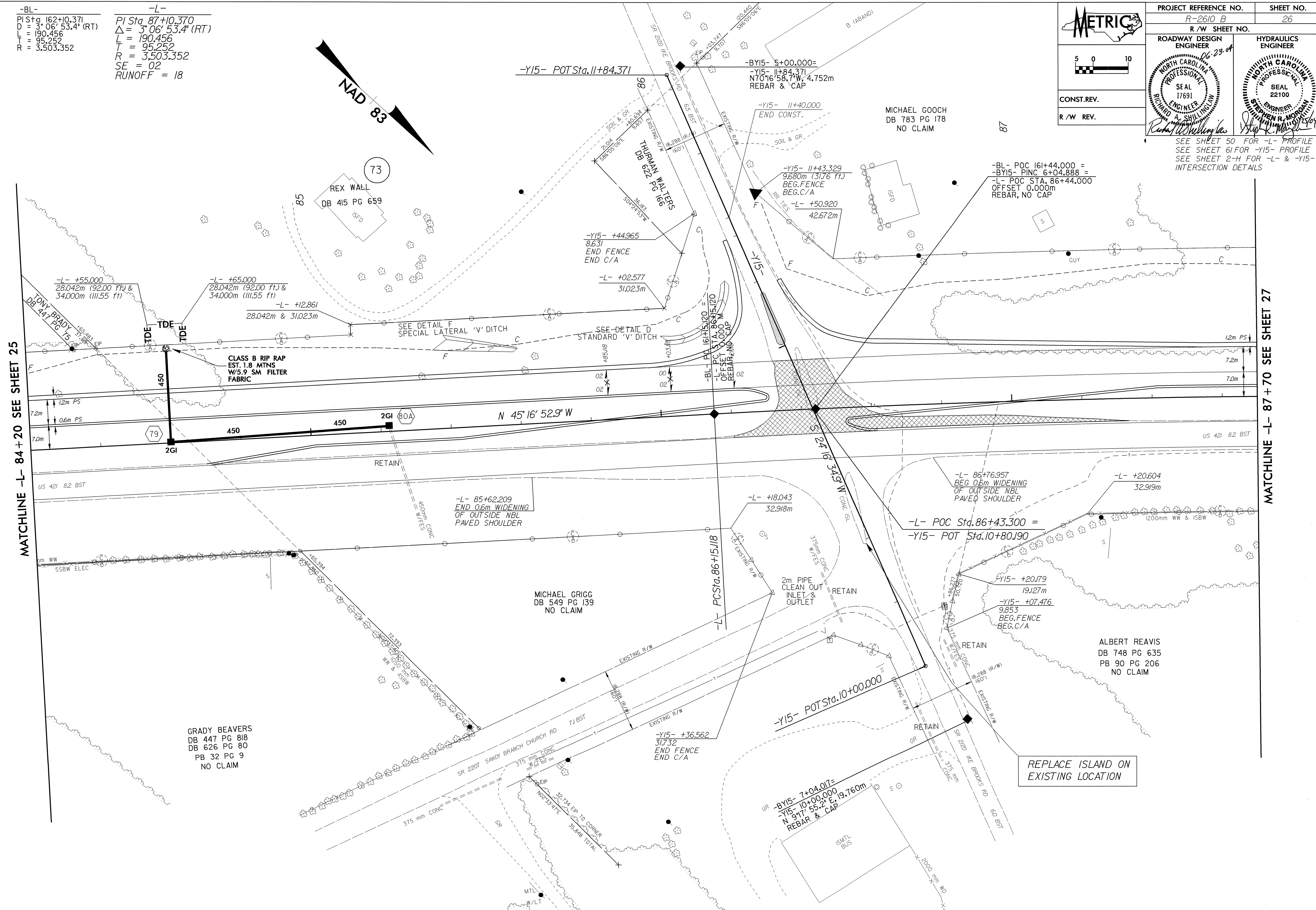
R/W REV.

PROJECT REFERENCE NO. R-2610.B	SHEET NO. 26
R/W SHEET NO.	
ROADWAY DESIGN ENGINEER NORTH CAROLINA PROFESSIONAL ENGINEER SEAL 17691 RICHARD A. SHILLING 06-23-04	HYDRAULICS ENGINEER NORTH CAROLINA PROFESSIONAL ENGINEER SEAL 22100 STEPHEN R. MODRUM 06-23-04

SEE SHEET 50 FOR -L- PROFILE
SEE SHEET 61 FOR -Y15- PROFILE
SEE SHEET 2-H FOR -L- & -Y15- INTERSECTION DETAILS

MATCHLINE -L- 84+20 SEE SHEET 25

MATCHLINE -L- 87+70 SEE SHEET 27



REVISIONS

25-MAR-2004 08:45
RSH:TRH:glw
RSH:TRH:glw