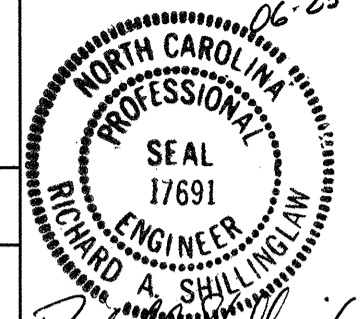
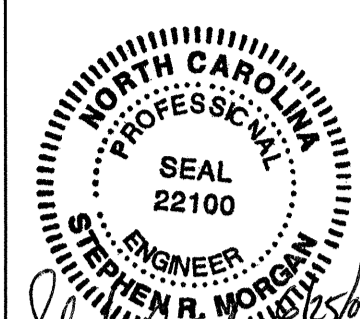
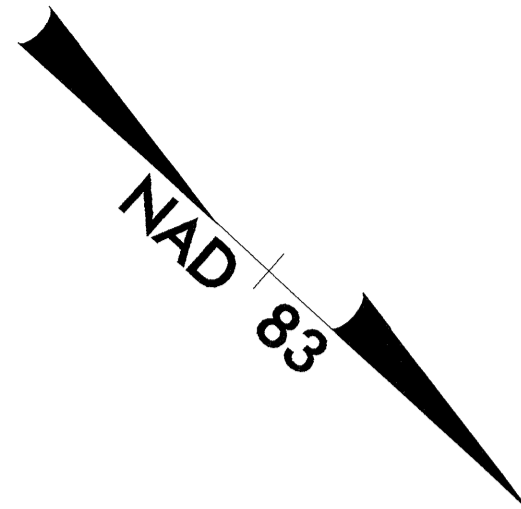
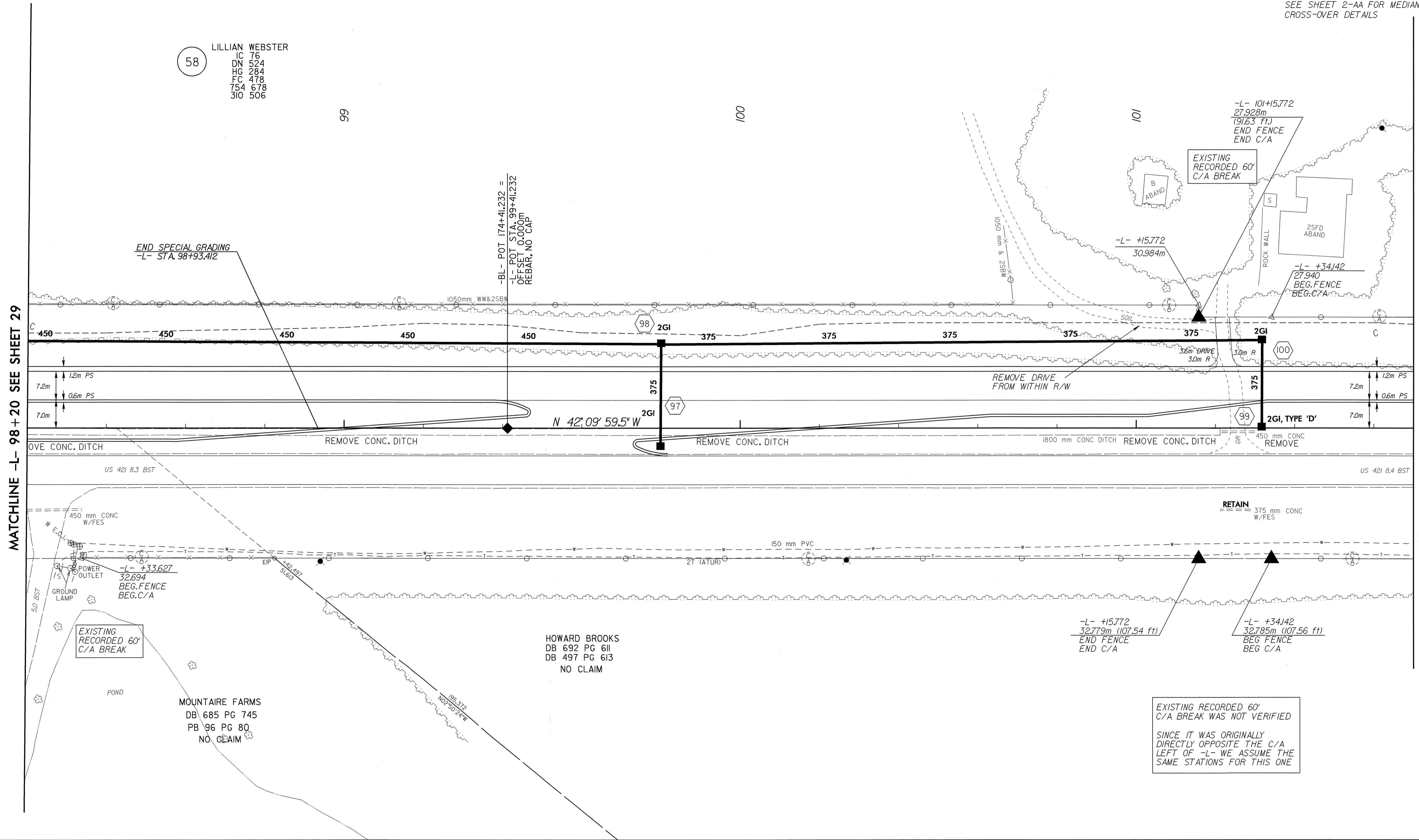
 5 0 10	PROJECT REFERENCE NO.	SHEET NO.
	R-2610 B	30
CONST. REV.	R /W SHEET NO.	
R /W REV.	ROADWAY DESIGN ENGINEER	HYDRAULICS ENGINEER
		

SEE SHEET 52 FOR -L- PROFILE  
 SEE CROSS-SECTIONS AND ROADWAY  
 STANDARD DRAWINGS STD.No. 862.01  
 SHEET 2 FOR SPECIAL MEDIAN GRADING  
 SEE SHEET 2-AA FOR MEDIAN  
 CROSS-OVER DETAILS



58 LILLIAN WEBSTER  
 IC 76  
 DN 524  
 HG 284  
 FC 478  
 754 678  
 310 506



REVISIONS

MATCHLINE -L- 98 +20 SEE SHEET 29

MATCHLINE -L- 101 +70 SEE SHEET 31

HOWARD BROOKS  
 DB 692 PG 611  
 DB 497 PG 613  
 NO CLAIM

MOUNTAIRE FARMS  
 DB 685 PG 745  
 PB 96 PG 80  
 NO CLAIM

EXISTING RECORDED 60'  
 C/A BREAK WAS NOT VERIFIED  
 SINCE IT WAS ORIGINALLY  
 DIRECTLY OPPOSITE THE C/A  
 LEFT OF -L- WE ASSUME THE  
 SAME STATIONS FOR THIS ONE

04-NOV-2003 08:59  
 10/23/03 11:18:52