
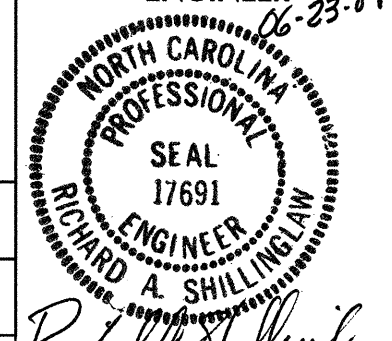
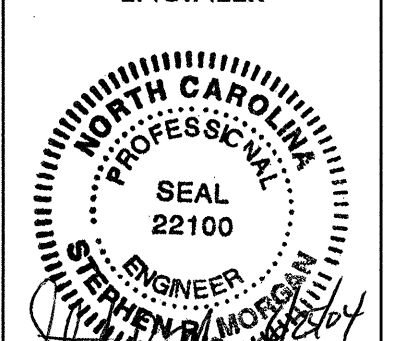


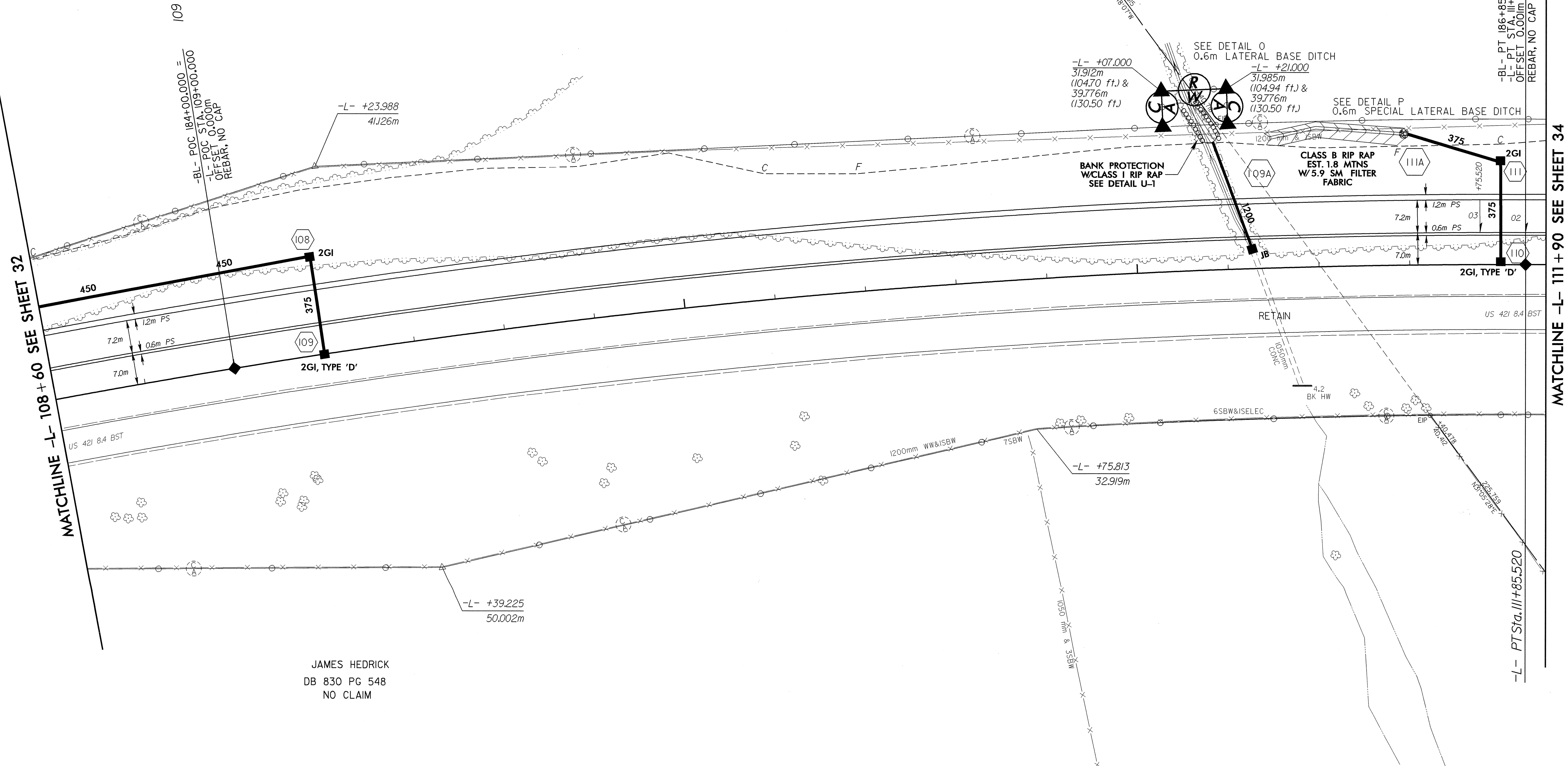
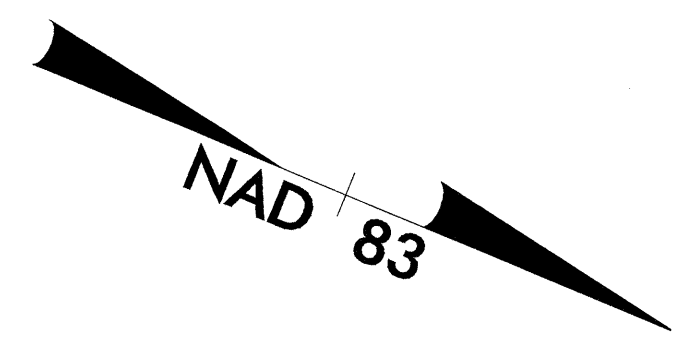
-BL-
 PI Sta 183+85.052
 D = 19° 47' 45.8" (RT)
 L = 607.046
 T = 306.579
 R = 1,756.976

-L-
 PI Sta 108+85.053
 Δ = 19° 47' 45.8" (RT)
 L = 607.046
 T = 306.579
 R = 1,756.976
 SE = 03
 RUNOFF = 30

 5 0 10 CONST. REV. R / W REV.	PROJECT REFERENCE NO. R-2610 B	SHEET NO. 33
	R / W SHEET NO.	
ROADWAY DESIGN ENGINEER  RICHARD A. SHILLINGHAM SEAL 17691 ENGINEER	HYDRAULICS ENGINEER  STEPHEN J. MOORE SEAL 22100 ENGINEER	
SEE SHEET 53 & 54 FOR -L- PROFILE		

(61)
 BRENDA GAY
 DB 515 PG 49
 PB 13 PG 32
 DB 522 PG 867

(62)
 TOWNSEND FARMS, INC.
 DB 489 PG 795
 PB 17 PG 8



REVISIONS

MATCHLINE -L- 108 + 60 SEE SHEET 32

MATCHLINE -L- 111 + 90 SEE SHEET 34

JAMES HEDRICK
 DB 830 PG 548
 NO CLAIM

23-OCT-2003 15:03
 23-OCT-2003 15:03
 23-OCT-2003 15:03