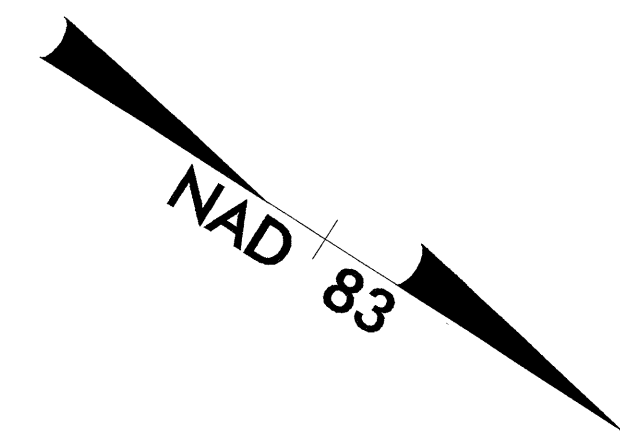


8/17/99

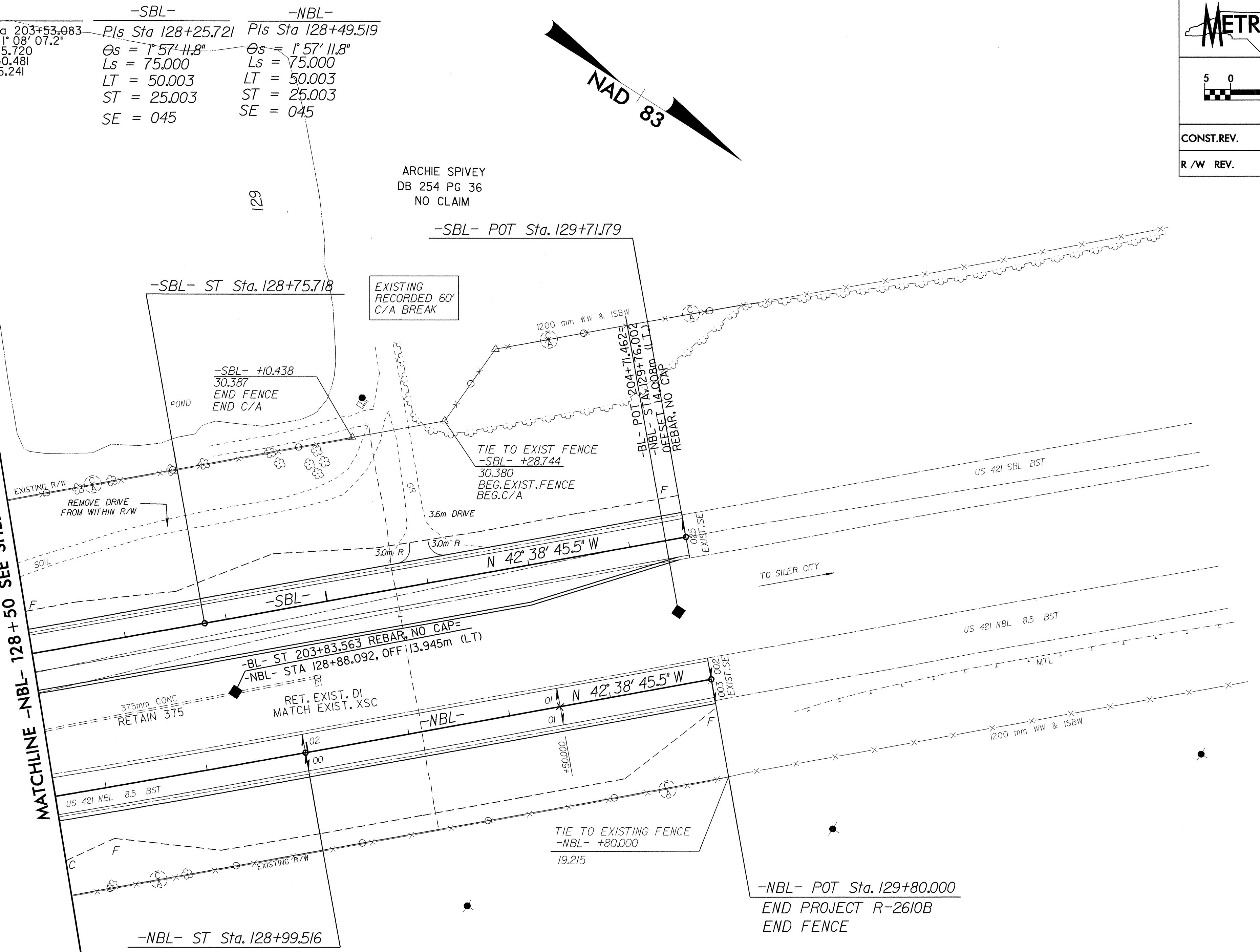
-BL-	-SBL-	-NBL-
Pls Sta 203+53.083	Pls Sta 128+25.721	Pls Sta 128+49.519
f/s = 1' 08" 07.2'	$\theta_s = 1' 57" 11.8"$	$\theta_s = 1' 57" 11.8"$
Ls = 45.720	Ls = 75.000	Ls = 75.000
LT = 30.481	LT = 50.003	LT = 50.003
ST = 15.241	ST = 25.003	ST = 25.003
	SE = 045	SE = 045



PROJECT REFERENCE NO. R-2610 B		SHEET NO. 39
R/W SHEET NO.		
ROADWAY DESIGN ENGINEER 06-2304	HYDRAULICS ENGINEER	
CONST.REV.		
R/W REV.		

SEE SHEET 56 FOR -NBL- PROFILE
SEE SHEET 57 FOR -SBL- PROFILE
SEE SHEET 2-M FOR -NBL- & -Y19- INTERSECTION DETAILS

MATCHLINE -NBL- 128 + 50 SEE SHEET 38



ARCHIE SPIVEY
DB 254 PG 36
NO CLAIM

WILLIAM PURVIS
DB 472 PG 266
NO CLAIM

REVISIONS

23-OCT-2003 15:08
C:\pwork\2610B\38.dwg
AT 10:08:52