


07/26/23



5 0 10

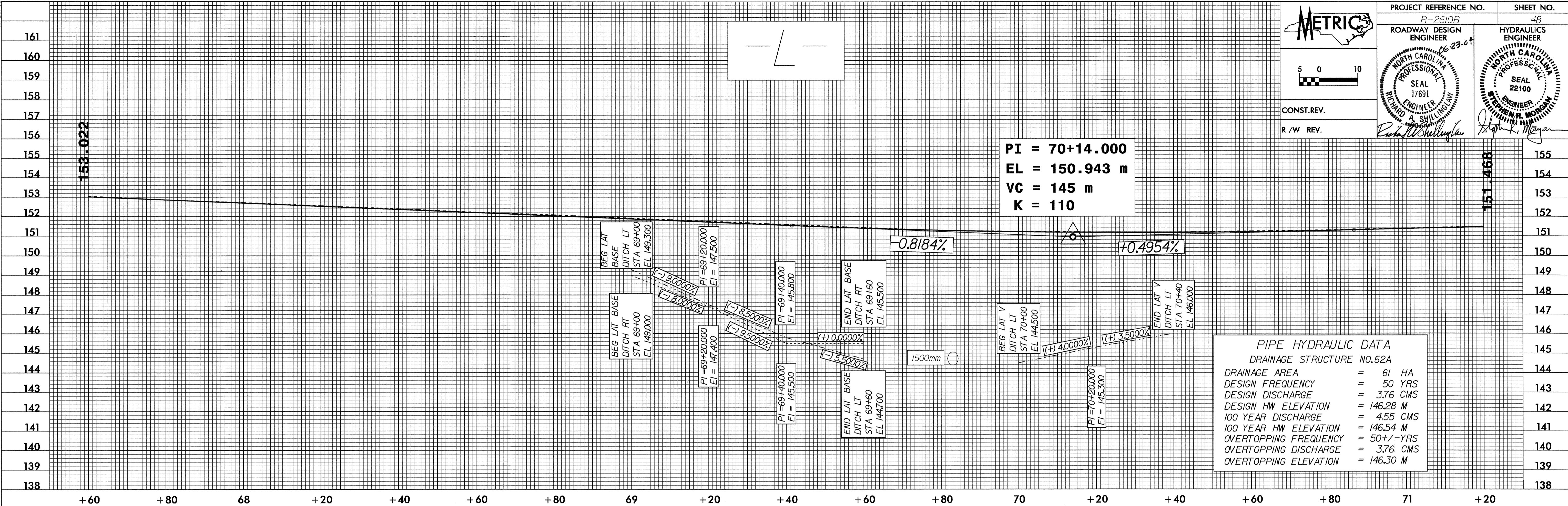
CONST.REV.
R /W REV.

PROJECT REFERENCE NO. R-2610B
SHEET NO. 48

ROADWAY DESIGN ENGINEER
HYDRAULICS ENGINEER

SEAL 17691
RICHARD A. SHILLINGHAM
NORTH CAROLINA PROFESSIONAL ENGINEER

SEAL 22100
STEPHEN R. MORROW
NORTH CAROLINA PROFESSIONAL ENGINEER



23-OCT-2003 15:04
Y:\enrd At 10/26/23

