

-BL-
 PI Sta 121+50.605
 D = 10° 17' 32.9" (RT)
 L = 315.619
 T = 158.235
 R = 1,756.976

-L-
 PI Sta 46+50.605
 Δ = 10° 17' 32.9" (RT)
 L = 315.619
 T = 158.235
 R = 1,756.976
 SE = 03
 RUNOFF = 30

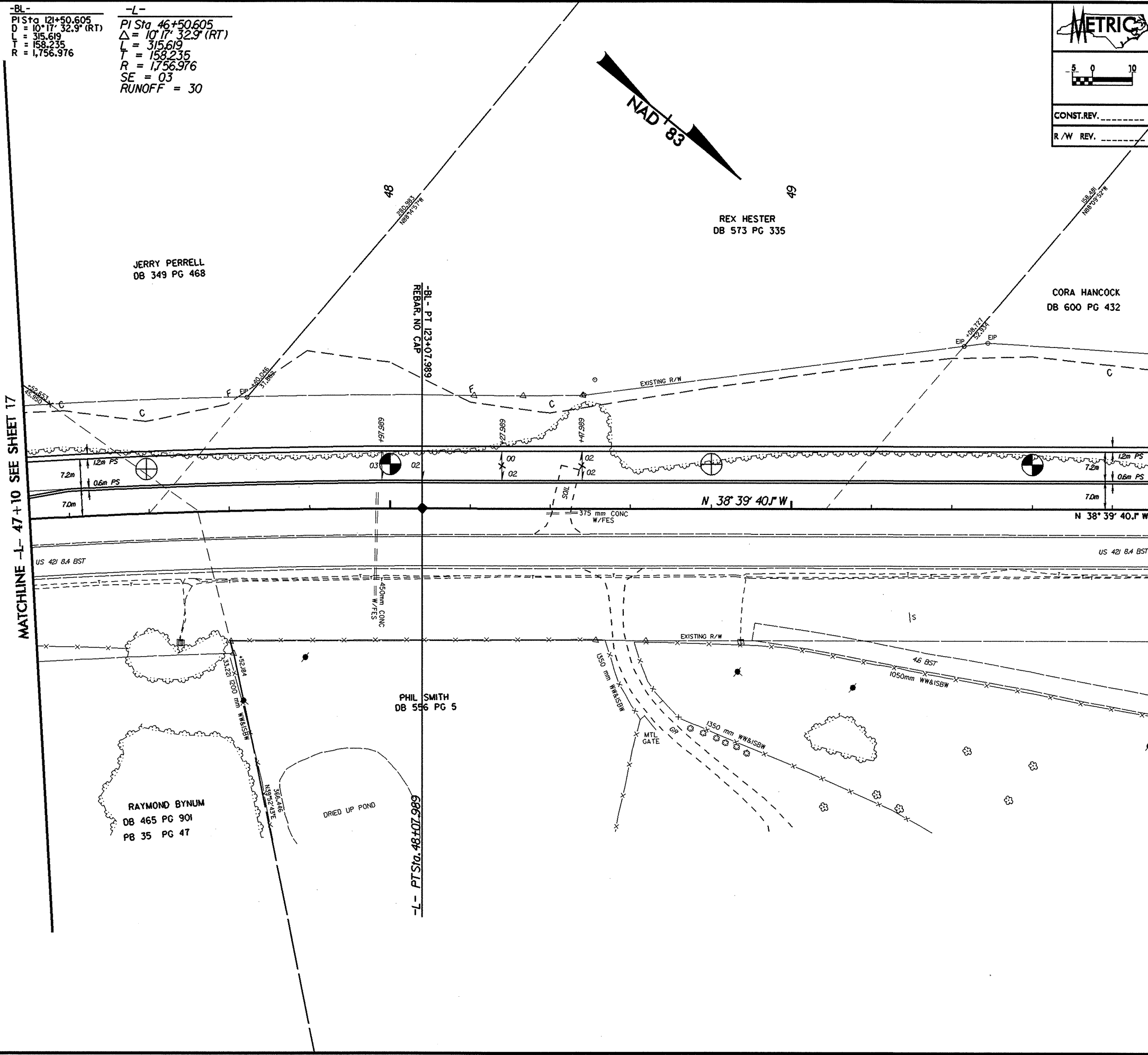
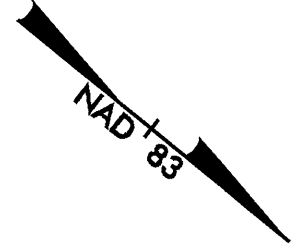
PROJECT REFERENCE NO. R-2610 B		SHEET NO. 18	
R/W SHEET NO.			
ROADWAY DESIGN ENGINEER		HYDRAULICS ENGINEER	
INCOMPLETE PLANS DO NOT USE FOR R/W ACQUISITION PRELIMINARY PLANS DO NOT USE FOR CONSTRUCTION			
CONST. REV. _____		R/W REV. _____	



REVISIONS

MATCHLINE -L- 47+10 SEE SHEET 17

MATCHLINE -L- 49+90 SEE SHEET 19



JERRY PERRELL
DB 349 PG 468

REX HESTER
DB 573 PG 335

CORA HANCOCK
DB 600 PG 432

PHIL SMITH
DB 556 PG 5

RAYMOND BYNUM
DB 465 PG 901
PB 35 PG 47

DRIED UP POND

-L- PT Sta. 48+07.989

-BL- PT 123+07.989
REBAR: NO CAP

*****SYSTEME*****
 *****EDITIONS*****
 *****REVISEMENTS*****
 *****CORRECTIONS*****