

8/17/08

ROLAND FIELDS
DB 286 PG 84
DB 310 PG 251

HAZEL BARKER
DB 356 PG 179

JACK REID, JR.
DB 561 PG 724

BOBBY HUDSON
DB 482 PG 233

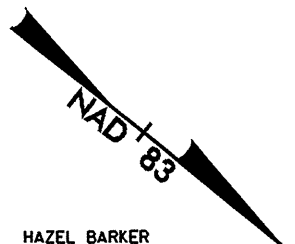
MOORE'S MACHINE CO. INC.
DB 393 PG 772
PB 18 PG 96

THE LUNDY SALES CORPORATION
DB 344 PG 162
DB 367 PG 523

METRIC

CONST. REV. _____
R/W REV. _____

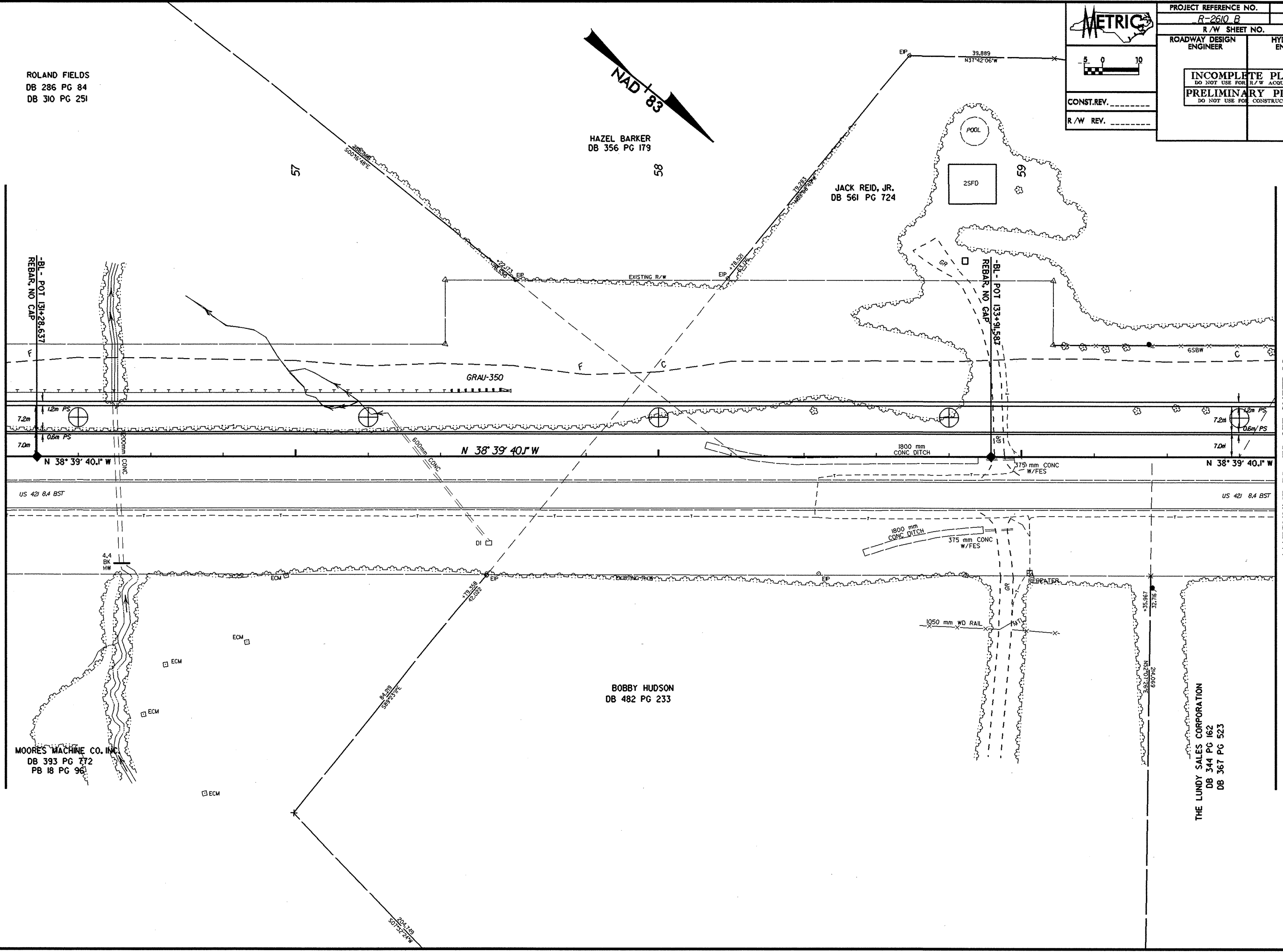
PROJECT REFERENCE NO. R-2610 B	SHEET NO. 21
R/W SHEET NO.	
ROADWAY DESIGN ENGINEER	HYDRAULICS ENGINEER
INCOMPLETE PLANS DO NOT USE FOR R/W ACQUISITION PRELIMINARY PLANS DO NOT USE FOR CONSTRUCTION	



MATCHLINE L-56+20 SEE SHEET 20

MATCHLINE 59+70 SEE SHEET 22

REVISIONS



*****SYSTEME*****
 *****EDITIONS*****
 *****REVISIONS*****
