

**-BL-**  
 PI Sta 183+85.052  
 D = 19° 47' 45.8" (RT)  
 L = 607.046  
 T = 306.579  
 R = 1,756.976

**-Y17-**  
 PI Sta 10+54.119  
 Δ = 4° 13' 19.0" (RT)  
 L = 55.265  
 T = 27.645  
 R = 750.000  
 SE = MATCH EXIST  
 (SEE SHT 2-K)

**-L-**  
 PI Sta 108+85.053  
 Δ = 19° 47' 45.8" (RT)  
 L = 607.046  
 T = 306.579  
 R = 1,756.976  
 SE = 03  
 RUNOFF = 30

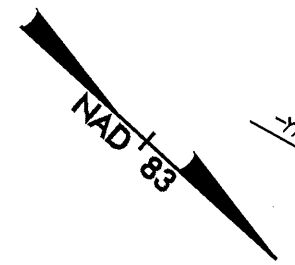
**METRIC**

0 5 10

CONST. REV. \_\_\_\_\_

R/W REV. \_\_\_\_\_

PROJECT REFERENCE NO.	SHEET NO.
R-2610 B	35
R/W SHEET NO.	
ROADWAY DESIGN ENGINEER	HYDRAULICS ENGINEER
<b>INCOMPLETE PLANS</b> DO NOT USE FOR R/W ACQUISITION <b>PRELIMINARY PLANS</b> DO NOT USE FOR CONSTRUCTION	



MATCHLINE -L- 105+20 SEE SHEET 34

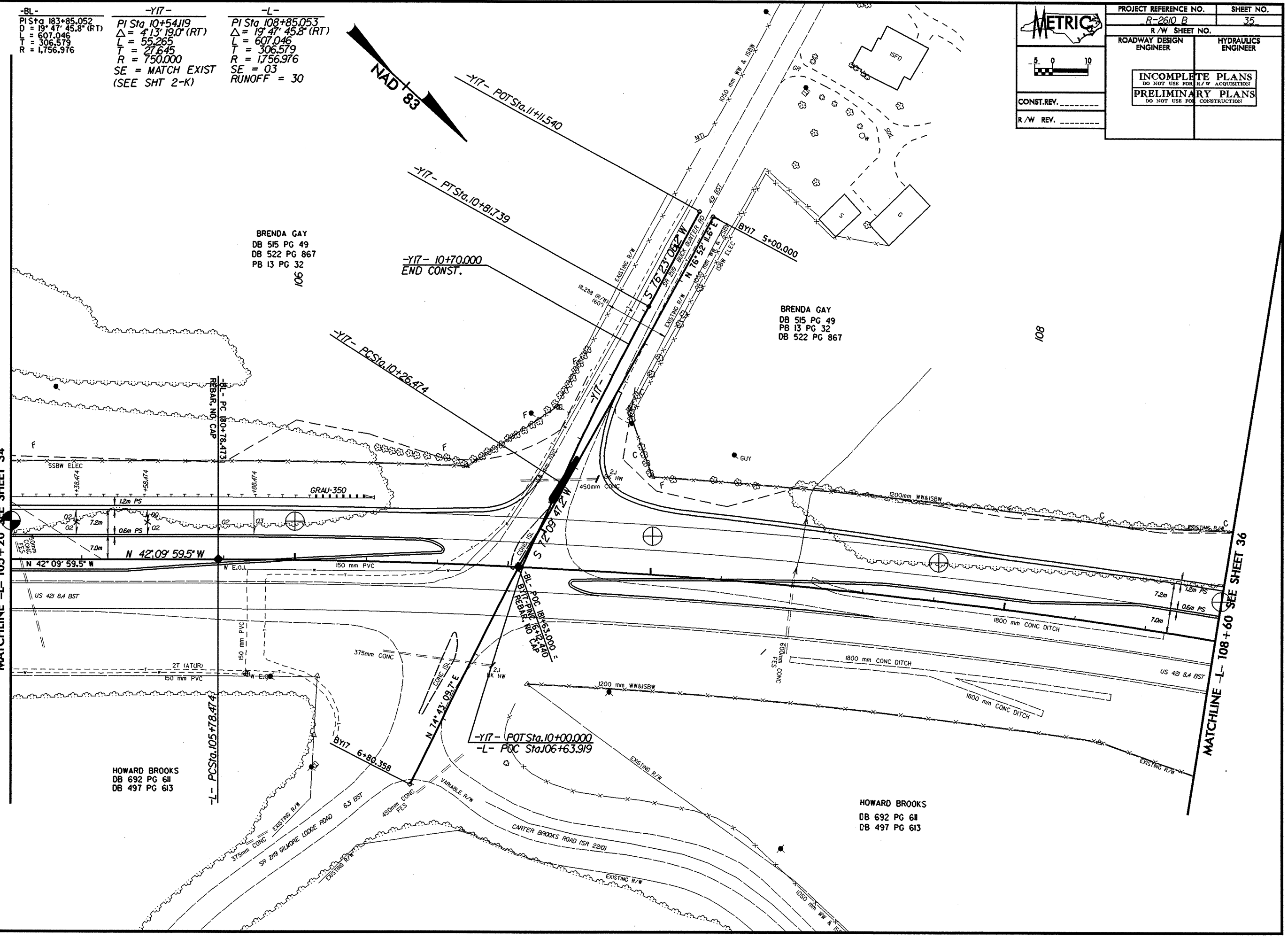
MATCHLINE -L- 108+60 SEE SHEET 36

**BRENDA GAY**  
 DB 515 PG 49  
 DB 522 PG 867  
 PB 13 PG 32  
 106

**BRENDA GAY**  
 DB 515 PG 49  
 PB 13 PG 32  
 DB 522 PG 867  
 108

**HOWARD BROOKS**  
 DB 692 PG 611  
 DB 497 PG 613

**HOWARD BROOKS**  
 DB 692 PG 611  
 DB 497 PG 613



REVISIONS

SYSTEMS TIME