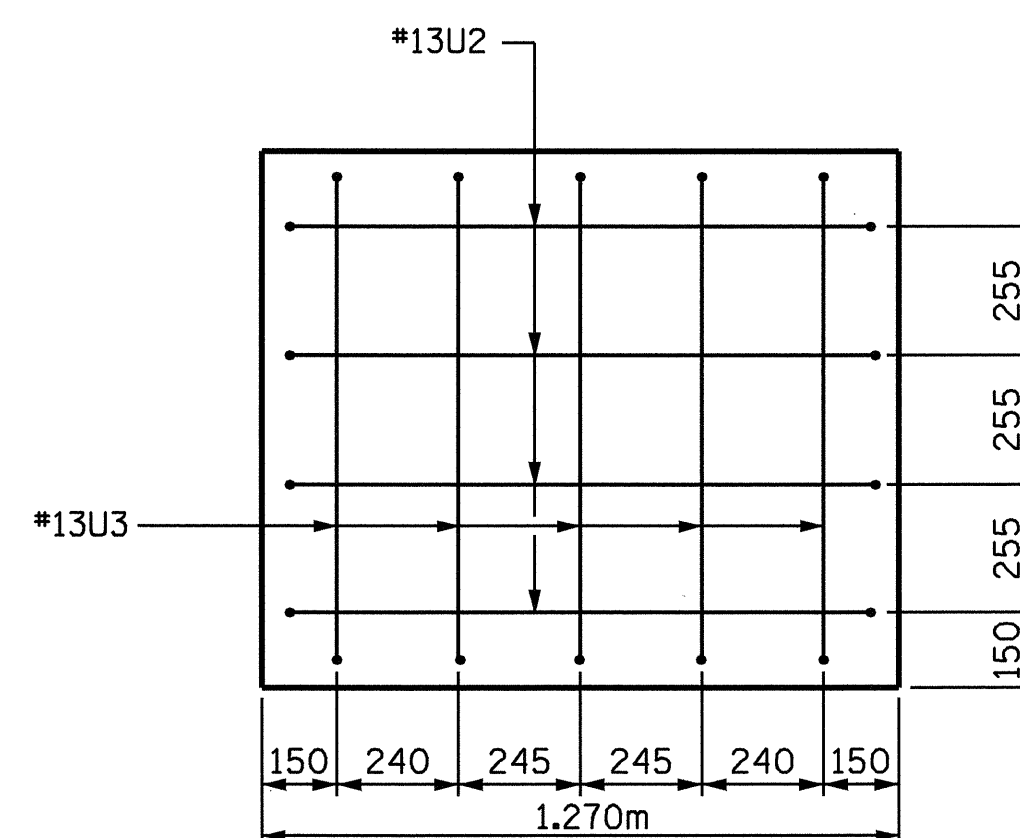


SECTION A-A

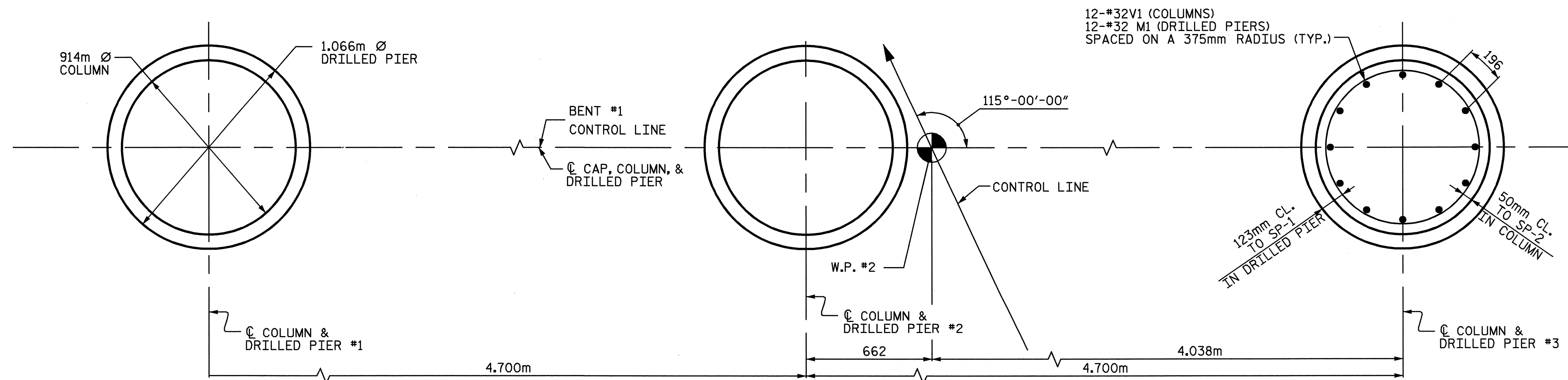


END VIEW

50mm MIN. CONCRETE COVER FROM END OF CAP REQUIRED FOR ALL #13U2, AND #13U3 BARS.
#13U2 AND #13U3 BARS MAY BE SHIFTED UP TO 50mm TO CLEAR "B" BARS.

BAR TYPES		BILL OF MATERIAL				
		BENT #1				
BAR NO.	SIZE	TYPE	LENGTH	WEIGHT		
B1	5 36	STR.	12240	484		
B2	5 36	1	13140	519		
B3	12 13	STR.	6490	77		
M1	36 32	STR.	7680	1771		
S1	50 16	3	3360	261		
U1	36 13	4	2080	74		
U2	8 13	4	2020	16		
U3	10 13	4	1820	18		
V1	36 32	2	3880	895		
REINFORCING STEEL (kg)			4115			
SP-1	3 *	5	102860	479		
SP-2	3 **	6	99280	296		
SPIRAL REINFORCING STEEL (kg)			775			
CLASS A CONCRETE (cu. meters)						
POUR 2 (COLUMNS)			5.7			
POUR 3 (CAP)			17.1			
TOTAL			22.8			
DRILLED PIERS						
DRILLED PIER CONCRETE (cu. meters)			13.4			
POUR 1 (DRILLED PIERS)						
1.066m Ø DRILLED PIERS IN SOIL			8.2 meters			
1.066m Ø DRILLED PIERS NOT IN SOIL			6.8 meters			
PERMANENT STEEL CASING FOR 1.066m Ø DRILLED PIERS			8.4 meters			
CROSSHOLE SONIC LOGGING			1 each			
CSL TUBES			63.1 meters			

* THE SP-1 SPIRAL REINFORCING STEEL SHALL BE W31 OR D-31 COLD DRAWN WIRE OR #16 PLAIN OR DEFORMED BAR.
** THE SP-2 SPIRAL REINFORCING STEEL SHALL BE W20 OR D-20 COLD DRAWN WIRE OR #13 PLAIN OR DEFORMED BAR.



PLAN OF COLUMNS AND DRILLED PIERS
ALL COLUMNS AND DRILLED PIERS ARE IDENTICAL

PROJECT NO. R-2610B
CHATHAM COUNTY
STATION 22+83.400-L-

SHEET 2 OF 2

STATE OF NORTH CAROLINA
DEPARTMENT OF TRANSPORTATION
RALEIGH

SUBSTRUCTURE
BENT #1

REVISIONS						SHEET NO.
NO.	BY:	DATE:	NO.	BY:	DATE:	TOTAL SHEETS
1			3			60
2			4			

STR. #1



02-JUL-2004 11:07
w:\squad\1\2610b\barbour\microstation\str\concrete\NR-2610B.sc.Dwg
dgv

DRAWN BY: H. T. BARBOUR DATE: 5-27-04
CHECKED BY: S. P. LAM DATE: 6-04