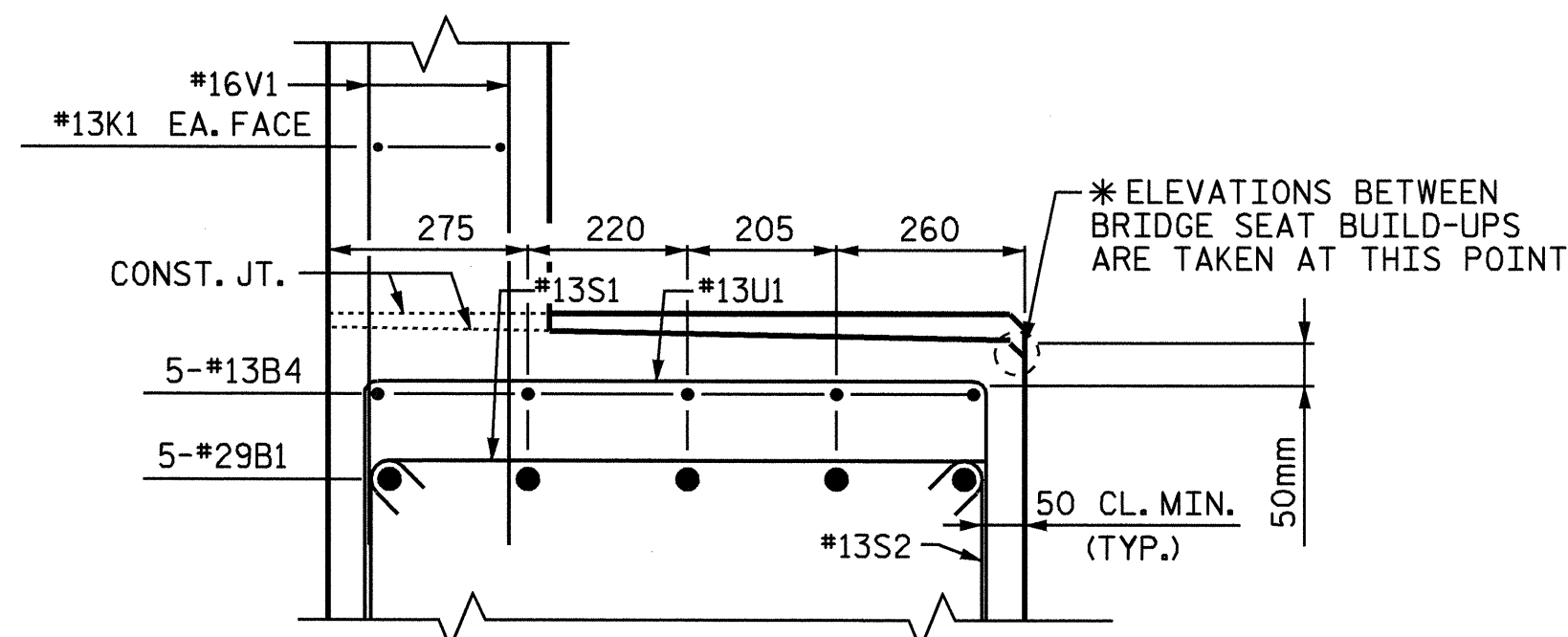
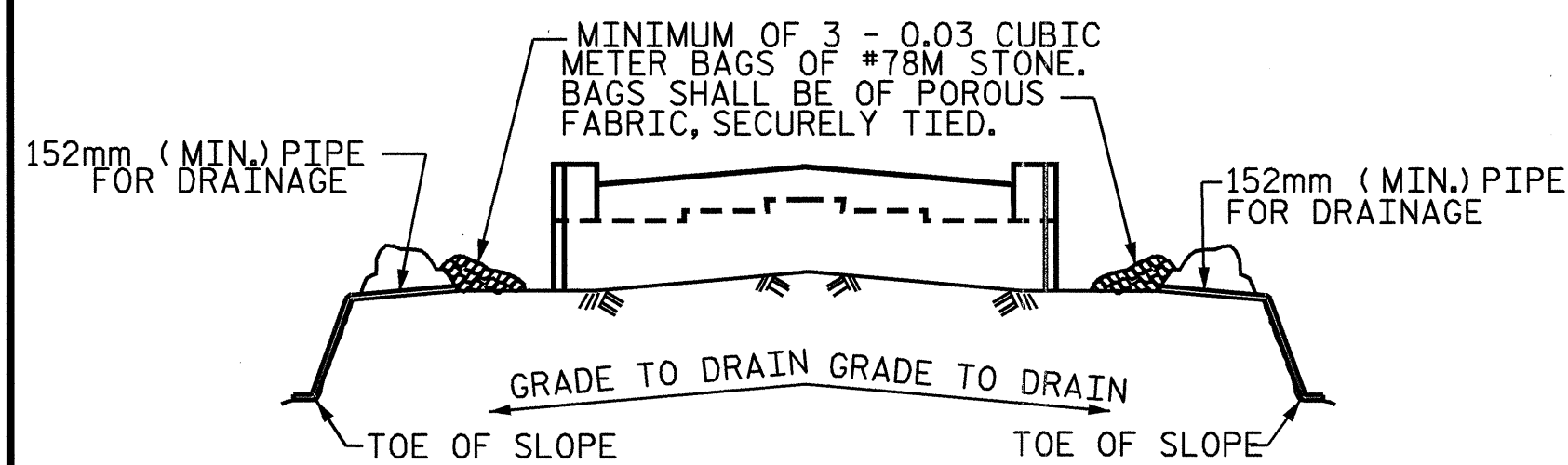


SECTION A-A



SECTION B-B

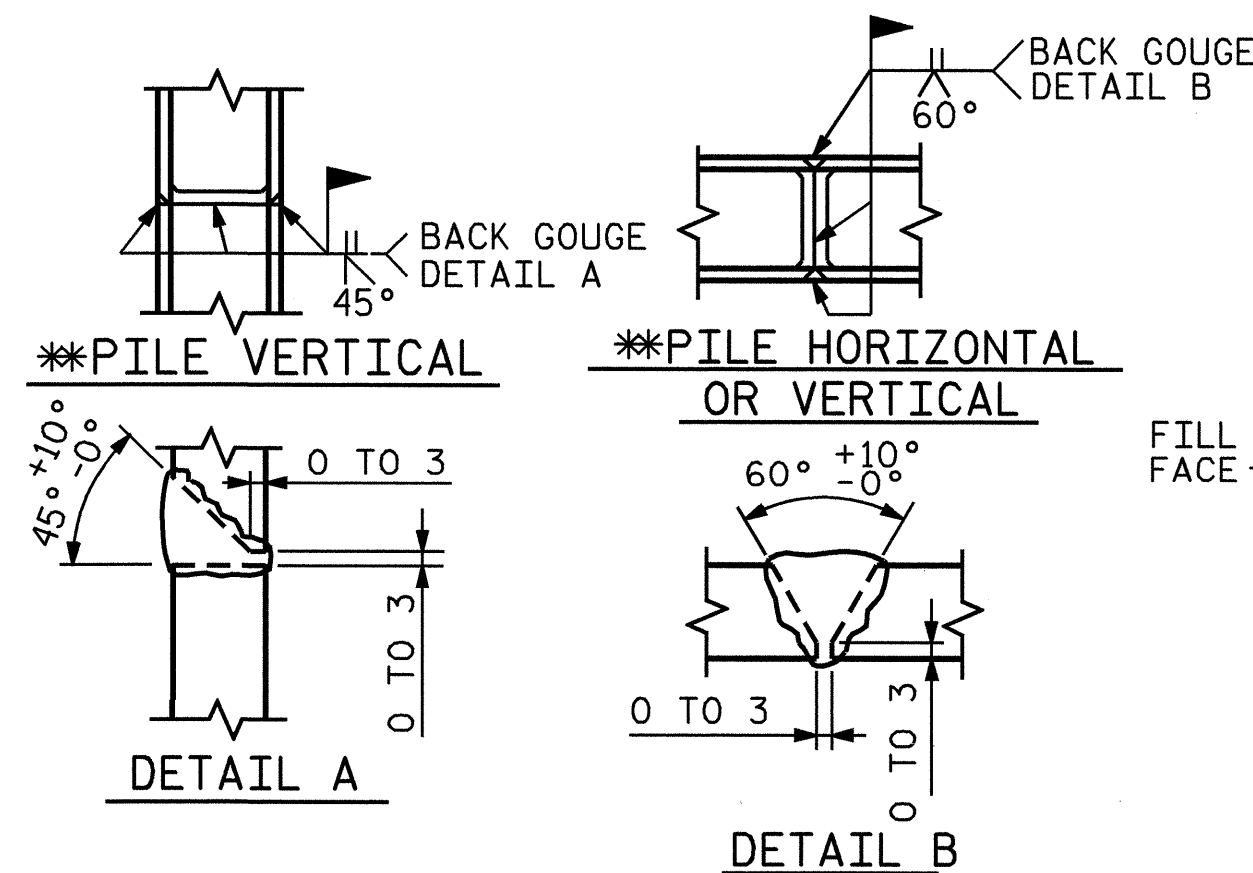


BAGGED STONE AND PIPE SHALL BE PLACED IMMEDIATELY AFTER COMPLETION OF END BENT EXCAVATION. PIPE MAY BE EITHER CONCRETE, CORRUGATED STEEL, CORRUGATED ALUMINUM ALLOY, OR CORRUGATED PLASTIC. PERFORATED PIPE WILL NOT BE ALLOWED.

BAGGED STONE SHALL REMAIN IN PLACE UNTIL THE ENGINEER DIRECTS THAT IT BE REMOVED. THE CONTRACTOR SHALL REMOVE AND DISPOSE OF SILT ACCUMULATIONS AT BAGGED STONE WHEN SO DIRECTED BY THE ENGINEER. BAGS SHALL BE REMOVED AND REPLACED WHENEVER THE ENGINEER DETERMINES THAT THEY HAVE DETERIORATED AND LOST THEIR EFFECTIVENESS.

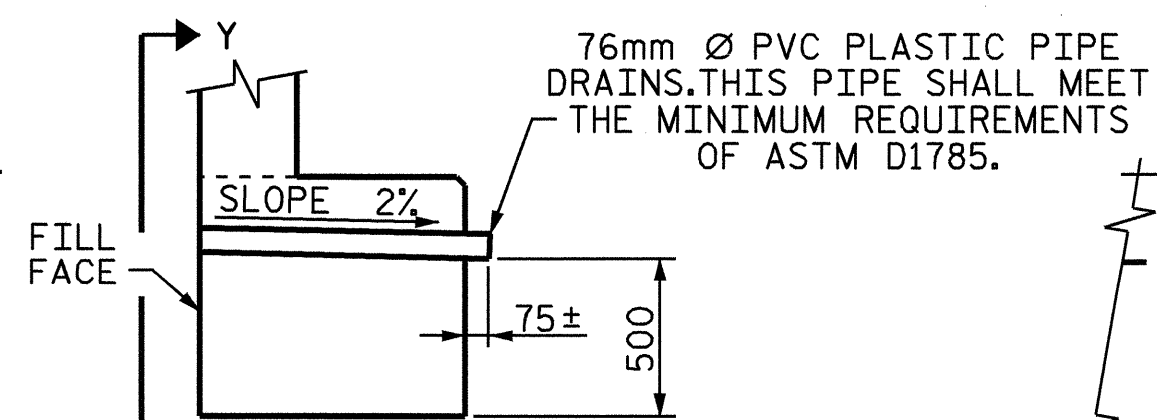
NO SEPARATE PAYMENT WILL BE MADE FOR THIS WORK AND THE ENTIRE COST OF THIS WORK SHALL BE INCLUDED IN THE UNIT CONTRACT PRICE FOR THE SEVERAL PAY ITEMS.

TEMPORARY DRAINAGE AT END BENT



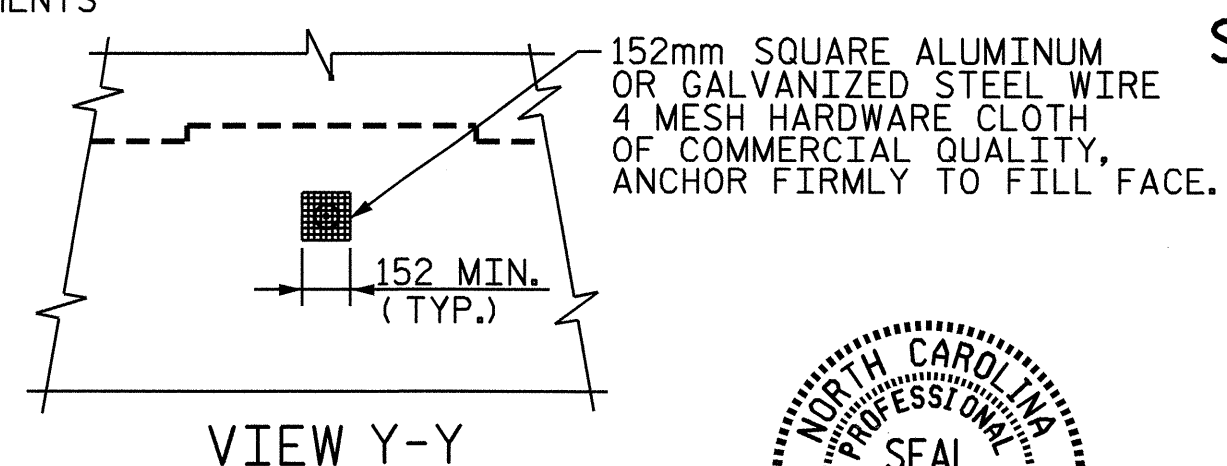
PILE SPLICE DETAILS

*POSITION OF PILE DURING WELDING.



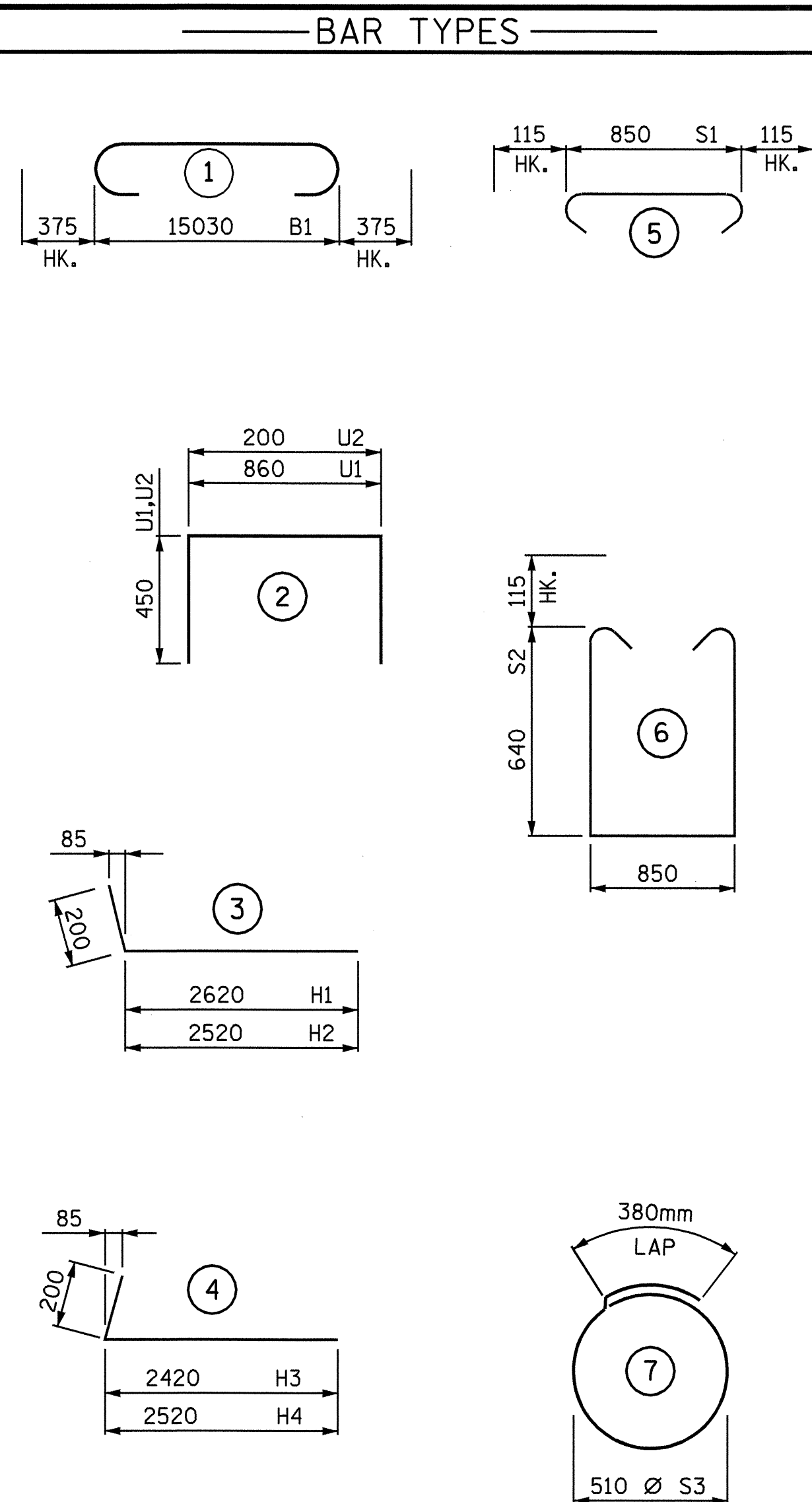
SECTION THRU CAP

NOTE: NO SEPARATE PAYMENT WILL BE MADE FOR FURNISHING AND INSTALLING THE PVC PLASTIC PIPE DRAINS, HARDWARE CLOTH AND FASTENERS. THE ENTIRE COST OF THIS WORK SHALL BE INCLUDED IN THE UNIT CONTRACT PRICE BID FOR THE SEVERAL PAY ITEMS.



VIEW Y-Y

PIPE DRAIN DETAILS



ALL BAR DIMENSIONS ARE OUT TO OUT.

BILL OF MATERIAL

END BENT NO. 1					
BAR NO.	SIZE	TYPE	LENGTH	WEIGHT	
B1	10	29	1	15780	798
B2	16	13	STR.	7920	126
B3	12	13	STR.	860	10
B4	10	13	STR.	720	7
H1	8	16	3	2820	35
H2	8	16	3	2720	34
H3	8	16	4	2620	33
H4	8	16	4	2720	34
K1	16	13	STR.	7920	126
K2	8	13	STR.	940	7
S1	44	13	5	1080	47
S2	44	13	6	2360	103
S3	14	13	7	1980	28
U1	6	13	2	1760	10
U2	44	13	2	1100	48
V1	88	16	STR.	1600	219
V2	52	16	STR.	1960	158

REINFORCING STEEL	Kgs	
1823		
CLASS A CONCRETE		
POUR #1		12.7 m ³
POUR #2		6.4 m ³
TOTAL		19.1 m ³
HP310x79 STEEL PILES		
No. 7		35.0 m
STEEL PILE POINTS		
		7 EACH

PROJECT NO. R-2610B

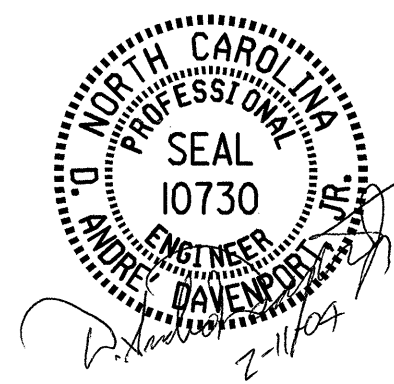
CHATHAM COUNTY

STATION 97+00.000-L-

SHEET 3 OF 3

STATE OF NORTH CAROLINA
DEPARTMENT OF TRANSPORTATION
RALEIGH

SUBSTRUCTURE
END BENT #1
DETAILS



REVISIONS					SHEET NO.
NO.	BY:	DATE:	NO.	BY:	DATE:
1			3		
2			4		

S-49
TOTAL SHEETS
60

I:\FEB-2004\1125\w\sq\quad\1\2610b\cadavenport\microstation\2610b.sd_ebl.2.dgn

DRAWN BY: D.A. DAVENPORT DATE: 10/03
CHECKED BY: H.T. BARBOUR DATE: 10/16/03