

5 0 10

CONST. REV.

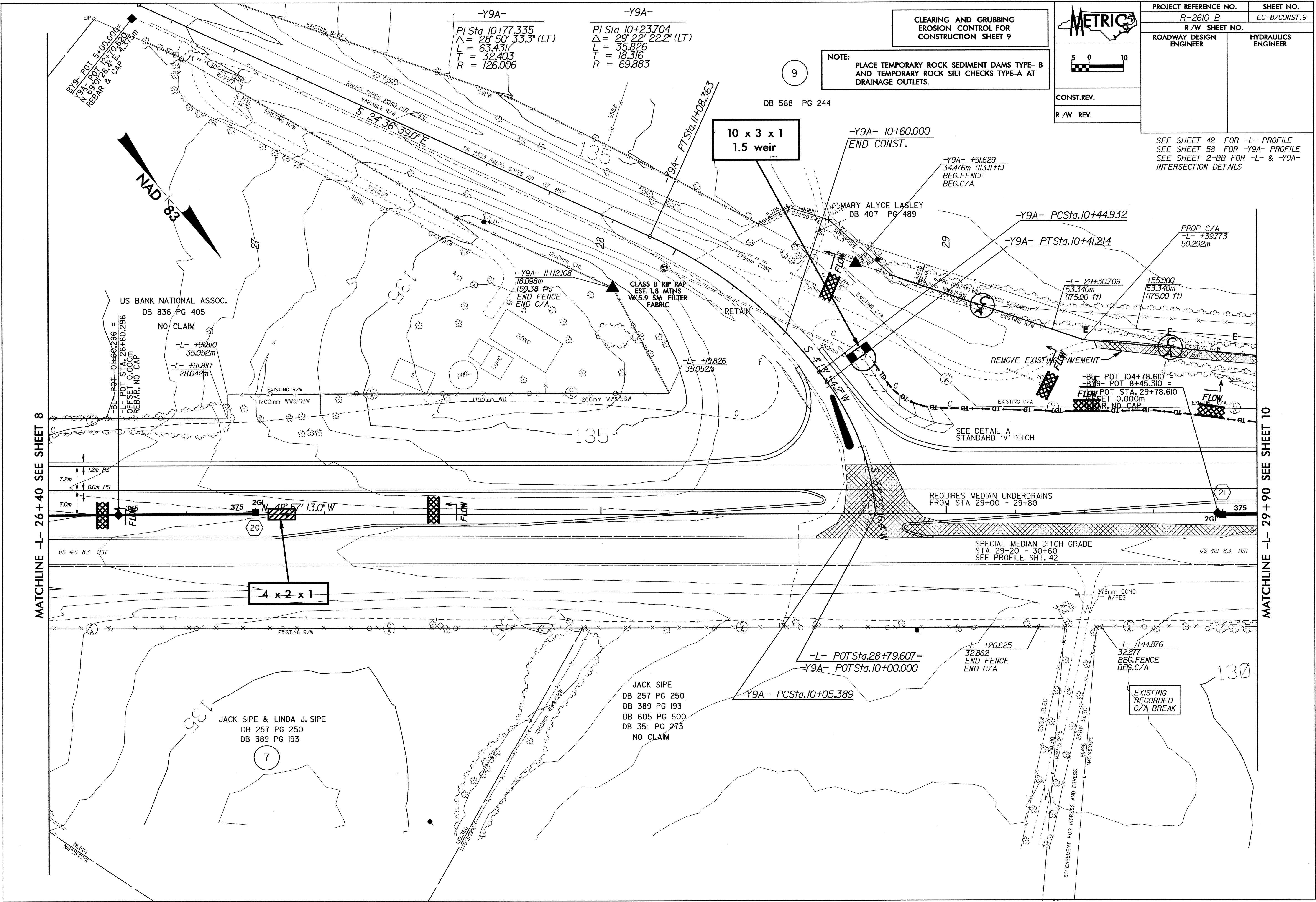
R/W REV.

PROJECT REFERENCE NO.	SHEET NO.
R-2610 B	EC-8/CONST. 9
R/W SHEET NO.	
ROADWAY DESIGN ENGINEER	HYDRAULICS ENGINEER

**CLEARING AND GRUBBING
EROSION CONTROL FOR
CONSTRUCTION SHEET 9**

NOTE:
PLACE TEMPORARY ROCK SEDIMENT DAMS TYPE- B
AND TEMPORARY ROCK SILT CHECKS TYPE-A AT
DRAINAGE OUTLETS.

SEE SHEET 42 FOR -L- PROFILE
SEE SHEET 58 FOR -Y9A- PROFILE
SEE SHEET 2-BB FOR -L- & -Y9A-
INTERSECTION DETAILS

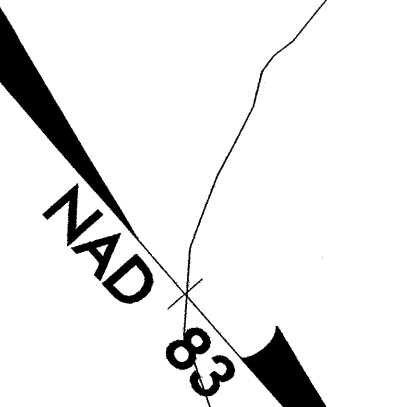


-Y9A-
PI Sta 10+77.335
 $\Delta = 28^\circ 50' 33.3''$ (LT)
L = 63.431
T = 32.403
R = 126.006

-Y9A-
PI Sta 10+23.704
 $\Delta = 29^\circ 22' 22.2''$ (LT)
L = 35.826
T = 18.316
R = 69.883

DB 568 PG 244

**10 x 3 x 1
1.5 weir**



US BANK NATIONAL ASSOC.
DB 836 PG 405
NO CLAIM

-L- +91.810
35.052m

-L- +91.810
28.042m

-Y9A- 11+12.108
18.098m
(59.38 ft)
END FENCE
END C/A

CLASS B RIP RAP
EST. 1.8 MINS
W/5.9 SA FILTER
FABRIC

-L- +19.826
35.052m

-Y9A- +51.629
34.476m (113.11 ft)
BEG. FENCE
BEG. C/A

-Y9A- PCSta. 10+44.932
-Y9A- PTSta. 10+41.214

-L- 29+30.709
53.340m
(175.00 ft)

+55.000
53.340m
(175.00 ft)

-BL- POT 104+78.610 =
-Y9- POT 8+45.310 =
FLOW POT STA. 29+78.610
SET 0.000m
R. NO CAP

SEE DETAIL A
STANDARD 'V' DITCH

REQUIRES MEDIAN UNDERDRAINS
FROM STA 29+00 - 29+80

SPECIAL MEDIAN DITCH GRADE
STA 29+20 - 30+60
SEE PROFILE SHT. 42

4 x 2 x 1

JACK SIPE & LINDA J. SIPE
DB 257 PG 250
DB 389 PG 193

JACK SIPE
DB 257 PG 250
DB 389 PG 193
DB 605 PG 500
DB 351 PG 273
NO CLAIM

-L- POT Sta. 28+79.607 =
-Y9A- POT Sta. 10+00.000

-Y9A- PCSta. 10+05.389

+26.625
32.862
END FENCE
END C/A

-L- +44.876
32.877
BEG. FENCE
BEG. C/A

EXISTING
RECORDED
C/A BREAK

MATCHLINE -L- 26+40 SEE SHEET 8

MATCHLINE -L- 29+90 SEE SHEET 10