

8/17/99
 25-JAN-2004 07:28
 C:\projects\2610B\proj\2610Bsz21.pph

-BL-
 PI Sta. 144+28.570
 D = 6° 37' 12.8" (LT)
 L = 402.343
 T = 201.396
 R = 3,482.152

-L-
 PI Sta. 69+28.571
 Δ = 6° 37' 12.8" (LT)
 L = 402.343
 T = 201.396
 R = 3,482.152
 SE = 02
 RUNOFF = 18

LEWIS MOORE, SR.
 (36) DB 676 PG 1058, DB 676 PG 1060
 PB 95 PG 273, DB 488 PG 654
 PB 95 PG 274

SANDY BRANCH BAPTIST CHURCH
 DB 735 PG 233
 PB 95 PG 274
 NO CLAIM

CLEARING AND GRUBBING
 EROSION CONTROL FOR
 CONSTRUCTION SHEET 21

NOTE:
 PLACE TEMPORARY ROCK SEDIMENT DAMS TYPE- B
 AND TEMPORARY ROCK SILT CHECKS TYPE-A AT
 DRAINAGE OUTLETS.

METRIC

5 0 10

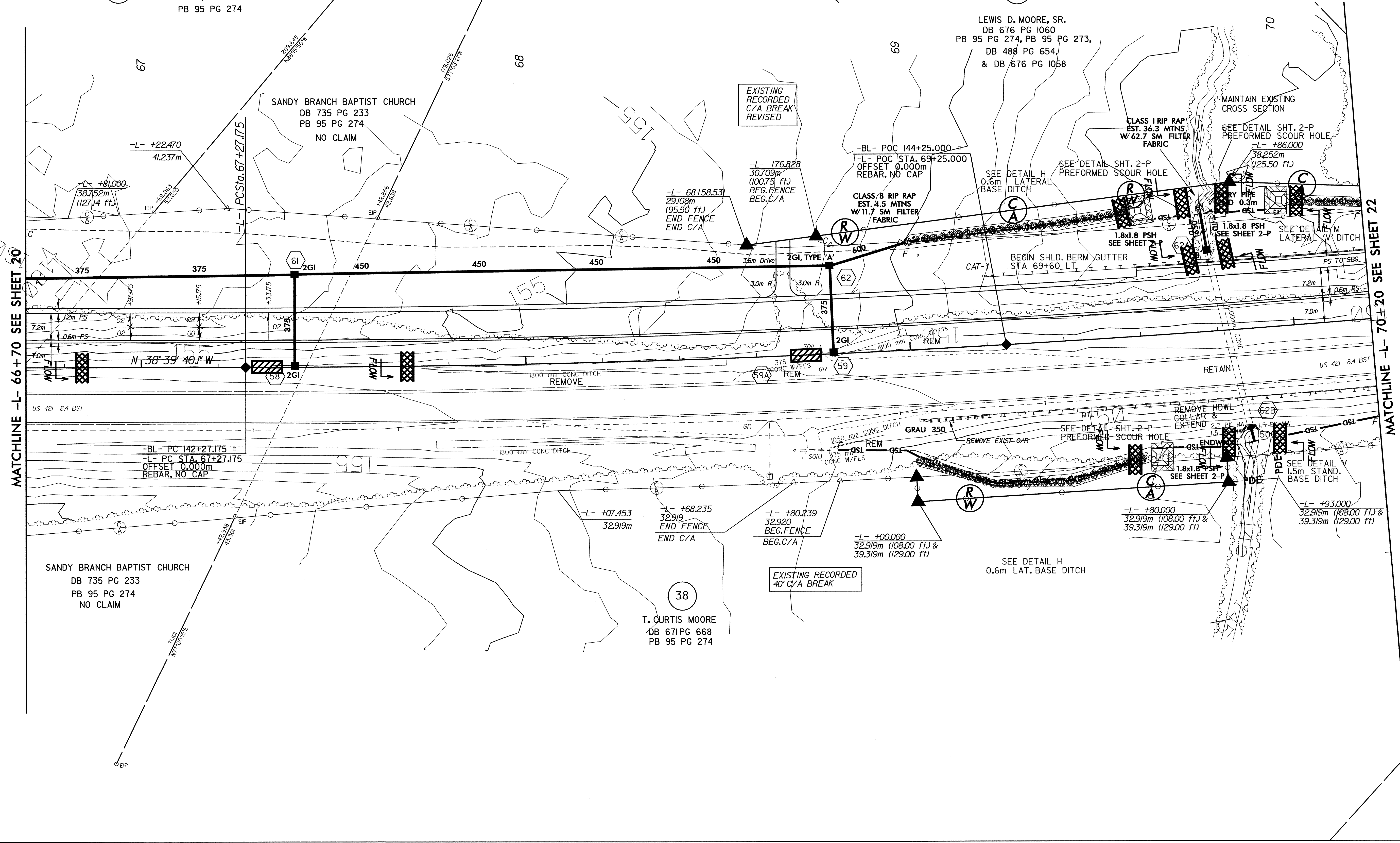
CONST.REV.
 R/W REV.

PROJECT REFERENCE NO. R-2610 B	SHEET NO. EC-20/CONST.21
R/W SHEET NO.	
ROADWAY DESIGN ENGINEER	HYDRAULICS ENGINEER

SEE SHEET 47 & 48 FOR -L- PROFILE

MATCHLINE -L- 66 + 70 SEE SHEET 20

MATCHLINE -L- 70 + 20 SEE SHEET 22



NAD 83

SANDY BRANCH BAPTIST CHURCH
 DB 735 PG 233
 PB 95 PG 274
 NO CLAIM

(38) T. CURTIS MOORE
 DB 671 PG 668
 PB 95 PG 274

LEWIS D. MOORE, SR.
 DB 676 PG 1060
 PB 95 PG 274, PB 95 PG 273,
 DB 488 PG 654,
 & DB 676 PG 1058

EXISTING RECORDED
 C/A BREAK
 REVISED

EXISTING RECORDED
 40' C/A BREAK

SEE DETAIL H
 0.6m LAT. BASE DITCH

MAINTAIN EXISTING
 CROSS SECTION

SEE DETAIL SHT. 2-P
 PREFORMED SCOUR HOLE

SEE DETAIL SHT. 2-P
 PREFORMED SCOUR HOLE

SEE DETAIL M
 LATERAL DITCH

SEE DETAIL H
 0.6m LAT. BASE DITCH

SEE DETAIL SHT. 2-P
 PREFORMED SCOUR HOLE

SEE DETAIL V
 STAND. BASE DITCH