

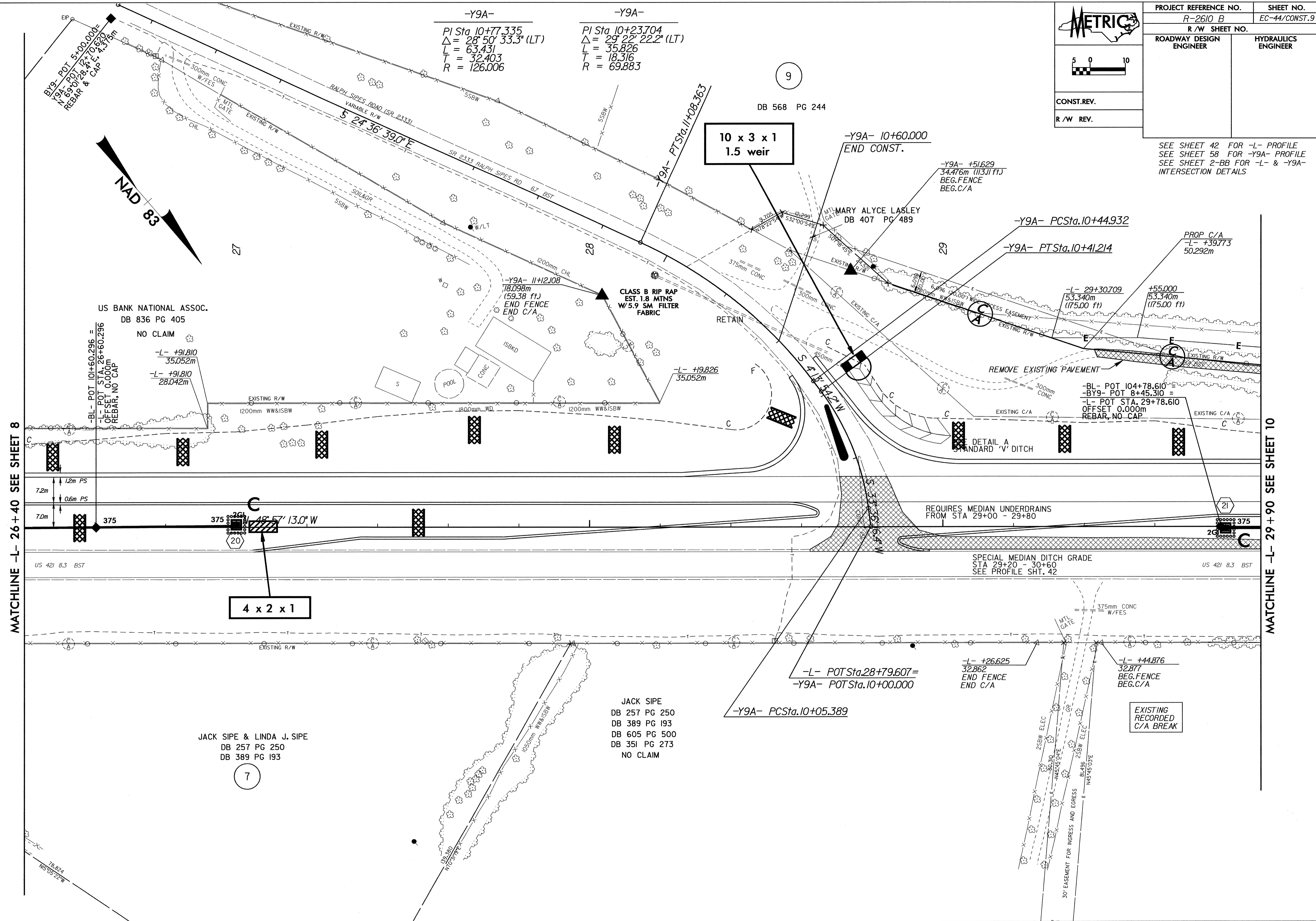
5 0 10

CONST. REV.

R/W REV.

PROJECT REFERENCE NO. R-2610 B	SHEET NO. EC-44/CONST.9
R/W SHEET NO.	
ROADWAY DESIGN ENGINEER	HYDRAULICS ENGINEER

SEE SHEET 42 FOR -L- PROFILE
SEE SHEET 58 FOR -Y9A- PROFILE
SEE SHEET 2-BB FOR -L- & -Y9A- INTERSECTION DETAILS



-Y9A-
PI Sta 10+77.335
 $\Delta = 28^\circ 50' 33.3''$ (LT)
L = 63.431
T = 32.403
R = 126.006

-Y9A-
PI Sta 10+23.704
 $\Delta = 29^\circ 22' 22.2''$ (LT)
L = 35.826
T = 18.316
R = 69.883

10 x 3 x 1
1.5 weir

4 x 2 x 1

JACK SIPE
DB 257 PG 250
DB 389 PG 193
DB 605 PG 500
DB 351 PG 273
NO CLAIM

JACK SIPE & LINDA J. SIPE
DB 257 PG 250
DB 389 PG 193

MATCHLINE -L- 26+40 SEE SHEET 8

MATCHLINE -L- 29+90 SEE SHEET 10

