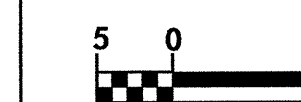
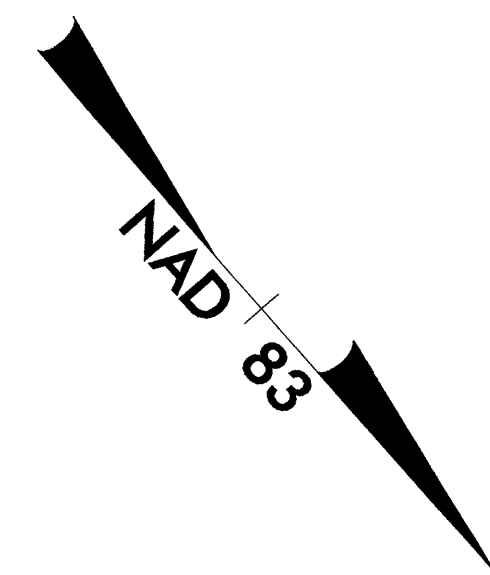




PROJECT REFERENCE NO.	SHEET NO.
R-2610 B	EC-46/CONST. II
R/W SHEET NO.	
ROADWAY DESIGN ENGINEER	HYDRAULICS ENGINEER
CONST. REV.	
R/W REV.	



SEE SHEET 43 FOR -L- PROFILE
SEE SHEET 2-C FOR -L- & -Y10A-
INTERSECTION DETAILS

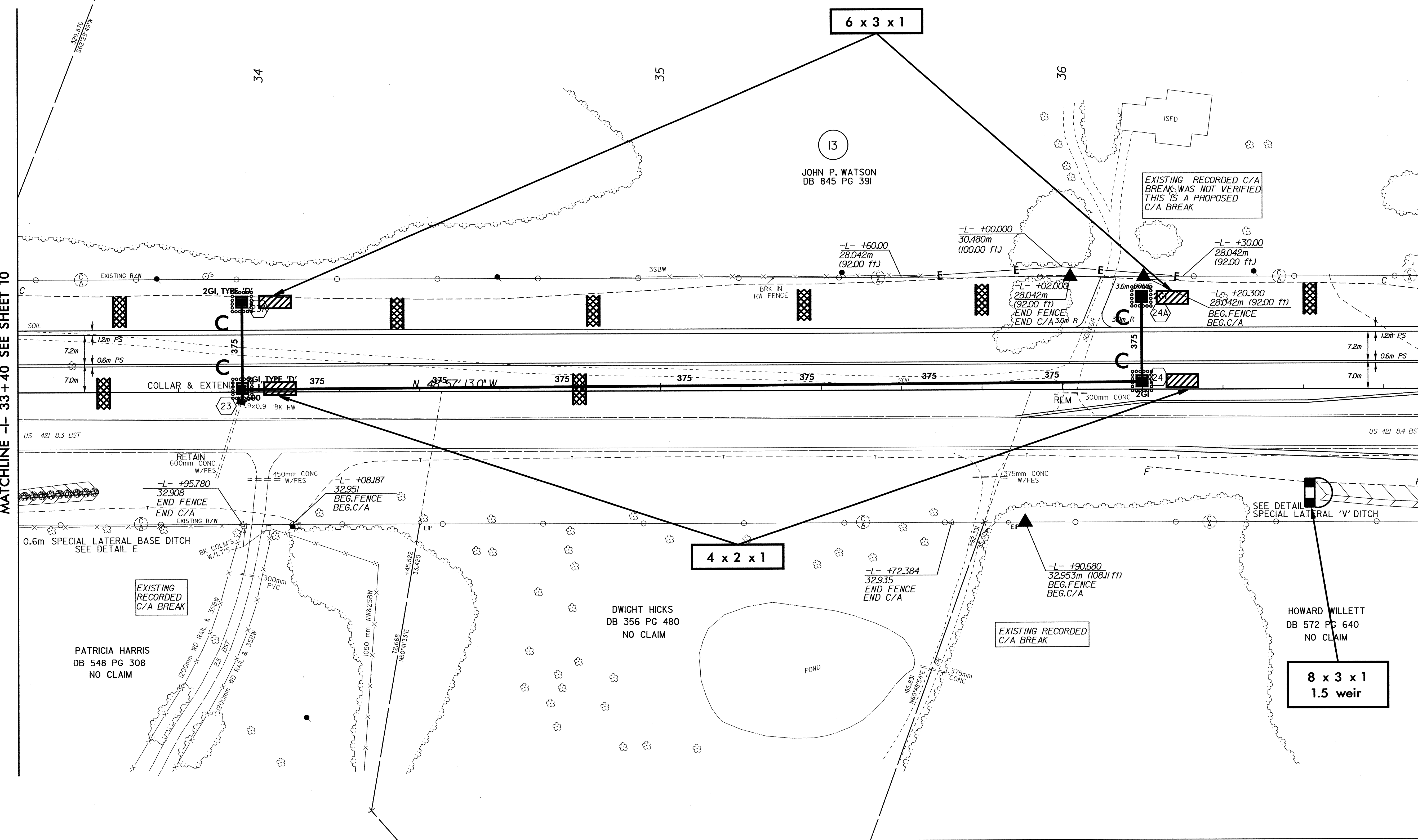


MARY ALYCE LASLEY

10

MATCHLINE -L- 33+40 SEE SHEET 10

MATCHLINE -L- 36+90 SEE SHEET 12



6 x 3 x 1

13

JOHN P. WATSON
DB 845 PG 391

EXISTING RECORDED C/A
BREAK WAS NOT VERIFIED
THIS IS A PROPOSED
C/A BREAK

4 x 2 x 1

DWIGHT HICKS
DB 356 PG 480
NO CLAIM

EXISTING RECORDED
C/A BREAK

8 x 3 x 1
1.5 weir

HOWARD WILLETT
DB 572 PG 640
NO CLAIM

PATRICIA HARRIS
DB 548 PG 308
NO CLAIM

EXISTING
RECORDED
C/A BREAK

POND