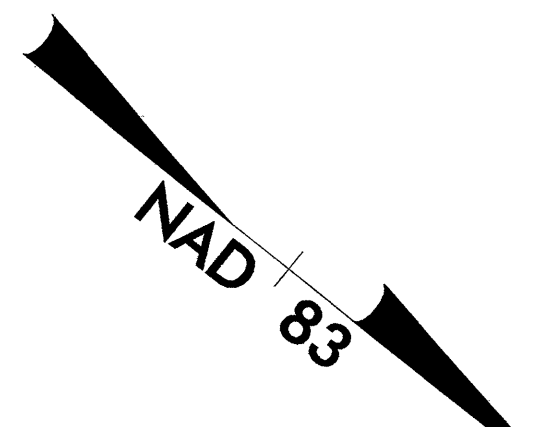


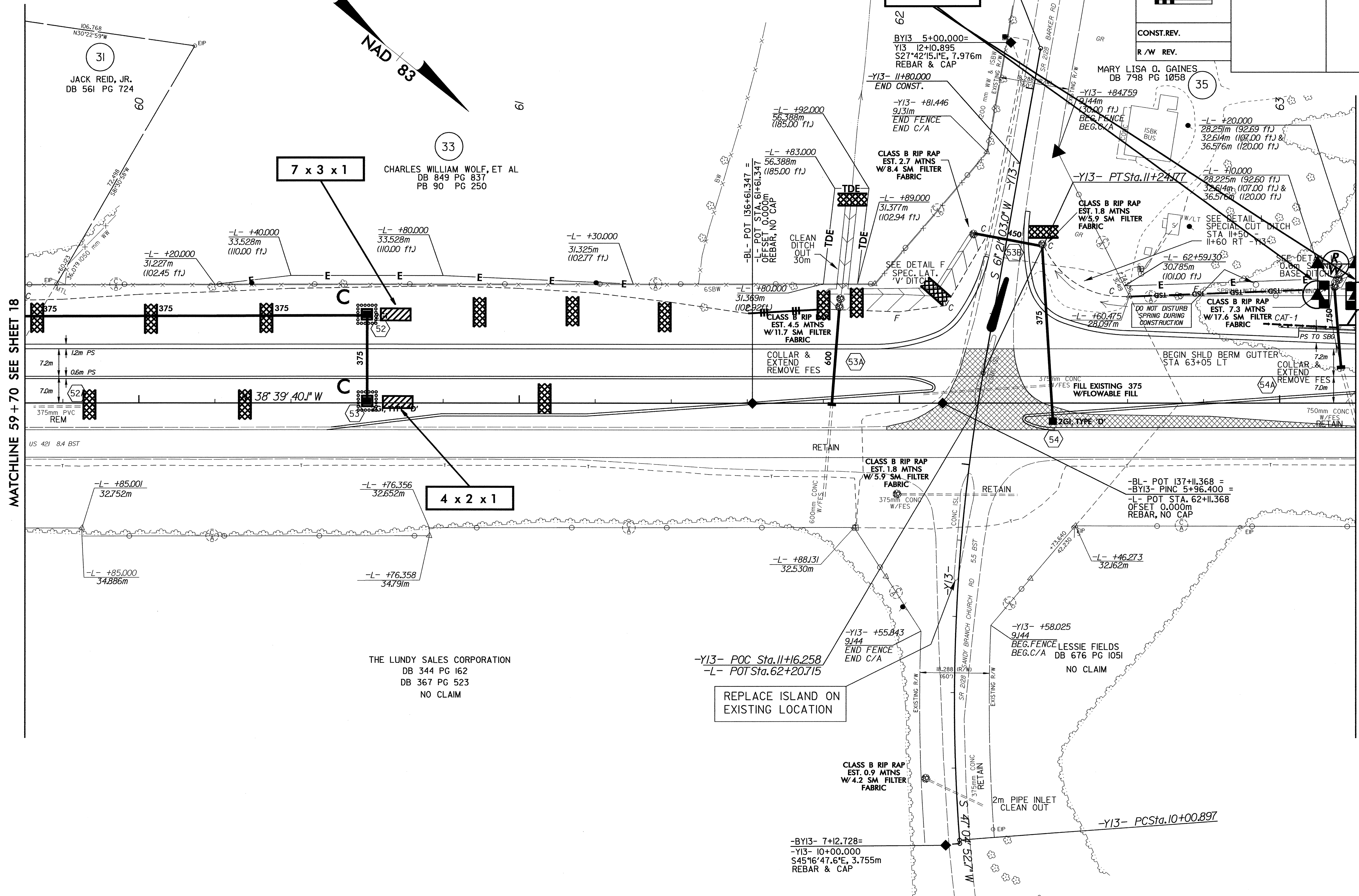
PROJECT REFERENCE NO. R-2610 B	SHEET NO. EC-54/CONST.19
R/W SHEET NO.	
ROADWAY DESIGN ENGINEER	HYDRAULICS ENGINEER

SEE SHEET 46 & 47 FOR -L- PROFILE
SEE SHEET 60 FOR -Y13- PROFILE
SEE SHEET 2-F FOR -L- & -Y13- INTERSECTION DETAILS



MATCHLINE 59 + 70 SEE SHEET 18

MATCHLINE -L- 63 + 20 SEE SHEET 20



31
JACK REID, JR.
DB 561 PG 724

33
CHARLES WILLIAM WOLF, ET AL
DB 849 PG 837
PB 90 PG 250

THE LUNDY SALES CORPORATION
DB 344 PG 162
DB 367 PG 523
NO CLAIM

7 x 3 x 1
1.5 weir

7 x 3 x 1

4 x 2 x 1

REPLACE ISLAND ON
EXISTING LOCATION

28-JAN-2004 16:47
dl:\env\lundy\2610b\pco\2610b\19.pch
m:\gibbsch