 5 0 10 CONST. REV. R / W REV.	PROJECT REFERENCE NO. R-2610 B	SHEET NO. EC-56/CONST.21
	ROADWAY DESIGN ENGINEER	HYDRAULICS ENGINEER

-BL-  
 PI Sta 144+28.570  
 D = 6° 37' 12.8" (LT)  
 L = 402.343  
 T = 201.396  
 R = 3,482.152

-L-  
 PI Sta 69+28.571  
 Δ = 6° 37' 12.8" (LT)  
 L = 402.343  
 T = 201.396  
 R = 3,482.152  
 SE = 02  
 RUNOFF = 18

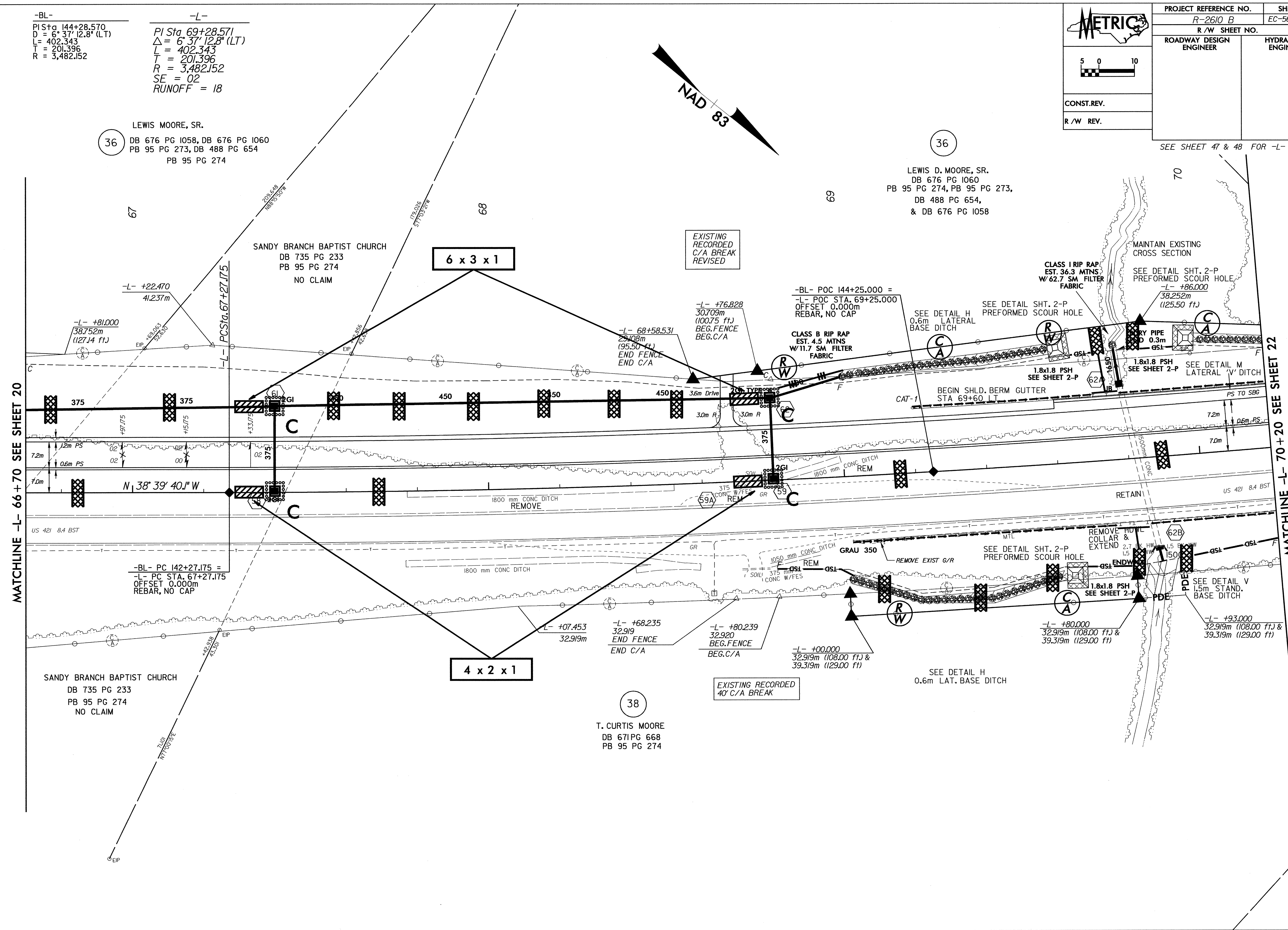
LEWIS MOORE, SR.  
 36 DB 676 PG 1058, DB 676 PG 1060  
 PB 95 PG 273, DB 488 PG 654  
 PB 95 PG 274

LEWIS D. MOORE, SR.  
 36 DB 676 PG 1060  
 PB 95 PG 274, PB 95 PG 273,  
 DB 488 PG 654,  
 & DB 676 PG 1058

SANDY BRANCH BAPTIST CHURCH  
 DB 735 PG 233  
 PB 95 PG 274  
 NO CLAIM

SANDY BRANCH BAPTIST CHURCH  
 DB 735 PG 233  
 PB 95 PG 274  
 NO CLAIM

38  
 T. CURTIS MOORE  
 DB 671 PG 668  
 PB 95 PG 274



29-JAN-2004 07:32  
 C:\Users\murali\Documents\2610b\proj\2610b\21.pat  
 mlaughlin