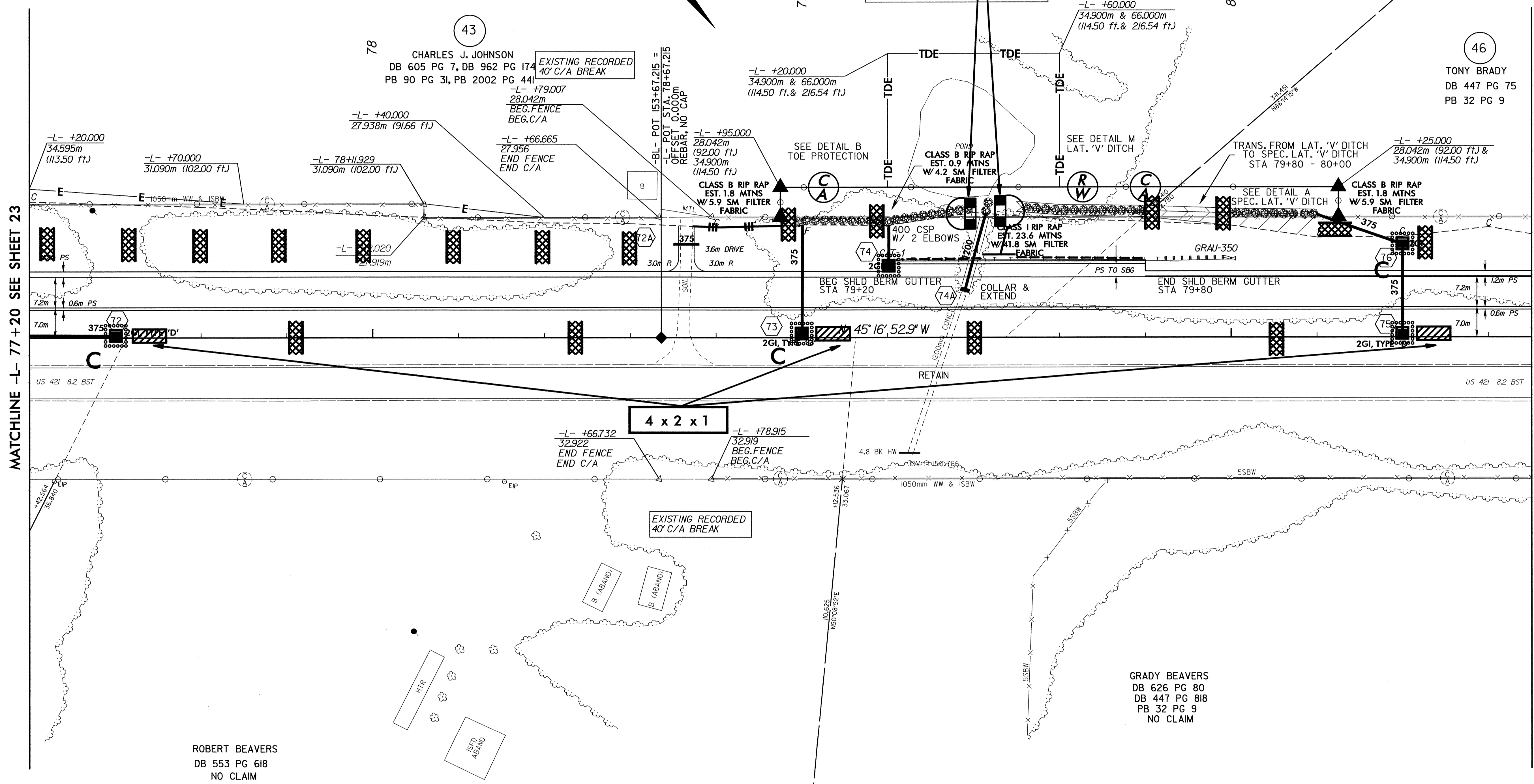


PROJECT REFERENCE NO. R-2610 B	SHEET NO. EC-59/CONST.24
R/W SHEET NO.	
ROADWAY DESIGN ENGINEER	HYDRAULICS ENGINEER
CONST. REV.	
R/W REV.	

SEE SHEET 49 FOR -L- PROFILE

NAD 83



43
CHARLES J. JOHNSON
DB 605 PG 7, DB 962 PG 174
PB 90 PG 31, PB 2002 PG 441
EXISTING RECORDED
40' C/A BREAK

46
TONY BRADY
DB 447 PG 75
PB 32 PG 9

ROBERT BEAVERS
DB 553 PG 618
NO CLAIM

GRADY BEAVERS
DB 626 PG 80
DB 447 PG 818
PB 32 PG 9
NO CLAIM

MATCHLINE -L- 77+20 SEE SHEET 23

MATCHLINE -L- 80+70 SEE SHEET 25

NOTE: POND TO BE DRAINED AND GRADED TO CONFORM WITH EXISTING GROUND AS DIRECTED BY THE ENGINEER

8/17/05
29-JAN-2004 08:05
C:\Users\jbr\Documents\Projects\2610\2610b\pvc\2610bs24.pch