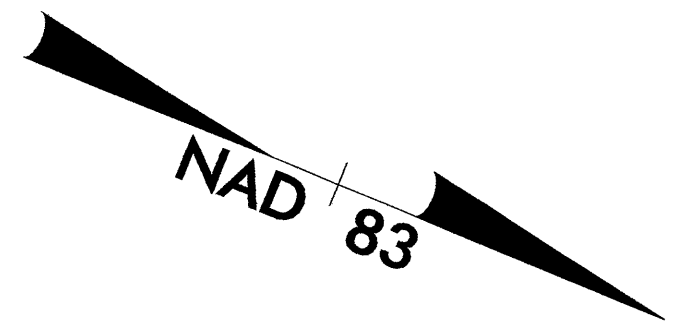


23-JAN-2004 14:09  
 C:\pwworkspace\2610b\pwworkspace\2610b\37.pph  
 8/17/99

-BL-	-NBL-	-SBL-
Pls Sta 199+59.294	Pls Sta 124+85.258	Pls Sta 124+61.460
$f s = 1^{\circ} 08' 07.2''$	$\theta s = 1^{\circ} 57' 11.8''$	$\theta s = 1^{\circ} 57' 11.8''$
$Ls = 45.720$	$Ls = 75.000$	$Ls = 75.000$
$LT = 30.481$	$LT = 50.003$	$LT = 50.003$
$ST = 15.241$	$ST = 25.003$	$ST = 25.003$
	$SE = 045$	$SE = 045$

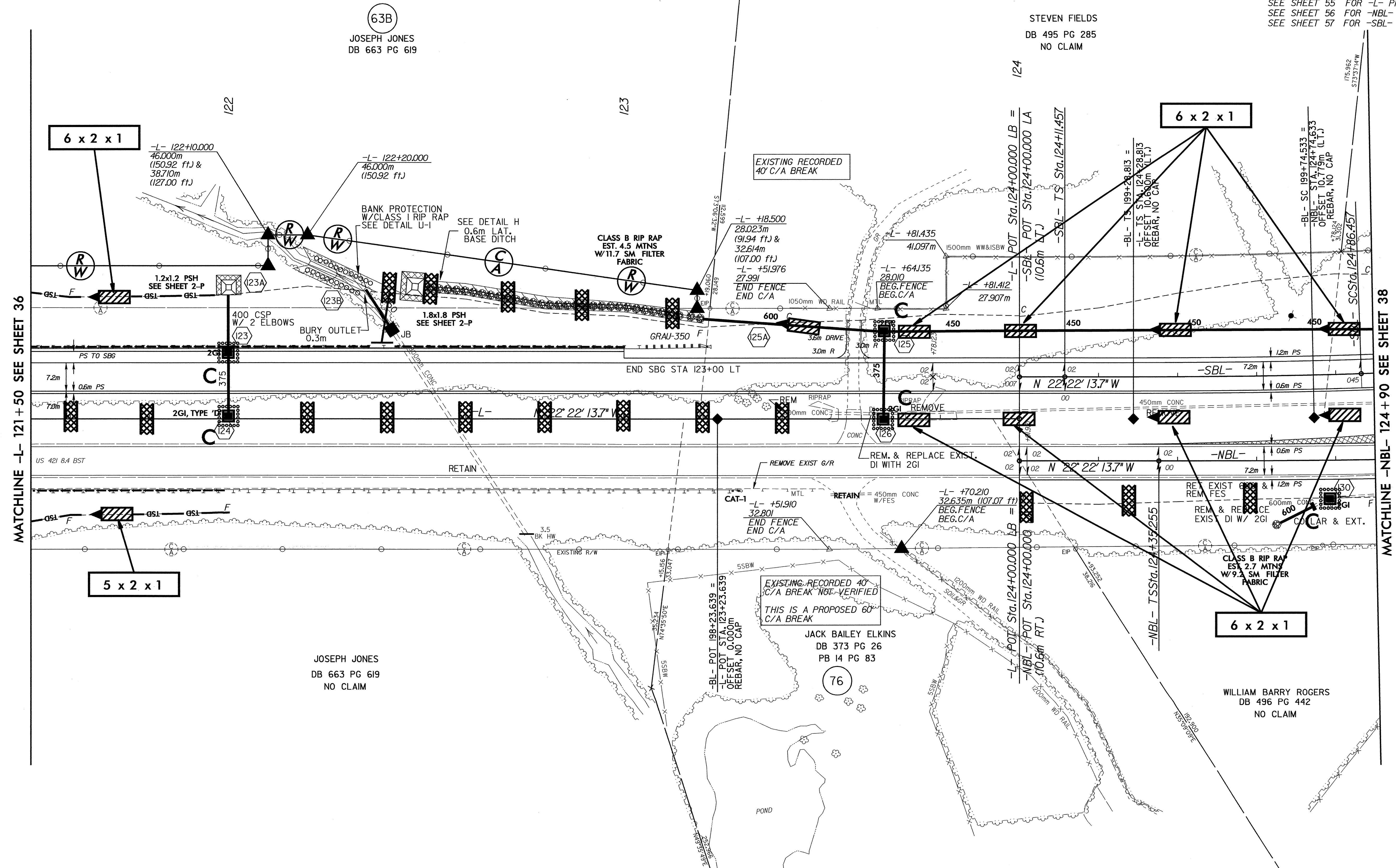


**METRIC**

CONST. REV.  
 R/W REV.

PROJECT REFERENCE NO.	SHEET NO.
R-2610 B	EC-72/CONST.37
R/W SHEET NO.	
ROADWAY DESIGN ENGINEER	HYDRAULICS ENGINEER

SEE SHEET 55 FOR -L- PROFILE  
 SEE SHEET 56 FOR -NBL- PROFILE  
 SEE SHEET 57 FOR -SBL- PROFILE



63B  
 JOSEPH JONES  
 DB 663 PG 619

STEVEN FIELDS  
 DB 495 PG 285  
 NO CLAIM

EXISTING RECORDED  
 40' C/A BREAK

EXISTING RECORDED 40'  
 C/A BREAK NOT VERIFIED  
 THIS IS A PROPOSED 60'  
 C/A BREAK

JACK BAILEY ELKINS  
 DB 373 PG 26  
 PB 14 PG 83

JOSEPH JONES  
 DB 663 PG 619  
 NO CLAIM

WILLIAM BARRY ROGERS  
 DB 496 PG 442  
 NO CLAIM

MATCHLINE -L- 121+50 SEE SHEET 36

MATCHLINE -NBL- 124+90 SEE SHEET 38

23-JAN-2004 14:09  
 C:\pwworkspace\2610b\pwworkspace\2610b\37.pph