

8.17/20

11-DEC-2003 JH44
BY: JH44
AT: R80-0975

REVISIONS

BEGIN CONSTRUCTION
 BEGIN PROJECT R-2610A
 -L- POT Sta. 10+00.000 =
 CL -SBL- POT Sta. 10+00.000 (8.172m LT)=
 CL -NBL- POT Sta. 10+00.000 (8.172m RT)

-SBL-	-NBL-	-L-
PI Sta 14+65.333	PI Sta 15+01.768	PI Sta 17+50.705
$\Delta = 16^{\circ} 40' 54.8" (RT)$	$\Delta = 22^{\circ} 41' 40.3" (RT)$	$\Delta = 47^{\circ} 41' 56.6" (RT)$
L = 277.007	L = 401.800	L = 831.257
T = 139.490	T = 203.568	T = 441.422
R = 951.410	R = 1,014.405	R = 998.500
SE = 0.048	SE = 0.048	SE = 0.048
Runoff = 42m	Runoff = 42m	Runoff = 42m
-YI-	-YI-	-YI-
PI Sta 10+60.952	PI Sta 10+90.167	PI Sta 11+85.056
$\Delta = 6^{\circ} 30' 27.7" (LT)$	$\Delta = 4^{\circ} 35' 34.3" (RT)$	$\Delta = 15^{\circ} 50' 55.3" (LT)$
L = 17.037	L = 4.008	L = 96.814
T = 8.528	T = 2.005	T = 48.718
R = 150.000	R = 50.000	R = 350.000

ROSS GERALD TAYLOR
 NANCY GRIFFIN
 LOIS WINSTEAD
 WILLIAM MCIVER
 DB 427 PG 868

BYI-712 POT 5+00.000=
 YI- 12+40.143
 S58°46'20.9" E 4.674m
 REBAR & CAP
 -YI- POT Sta. 12+40.143
 -YI- PT Sta. 12+33.152

METRIC

5 0 10

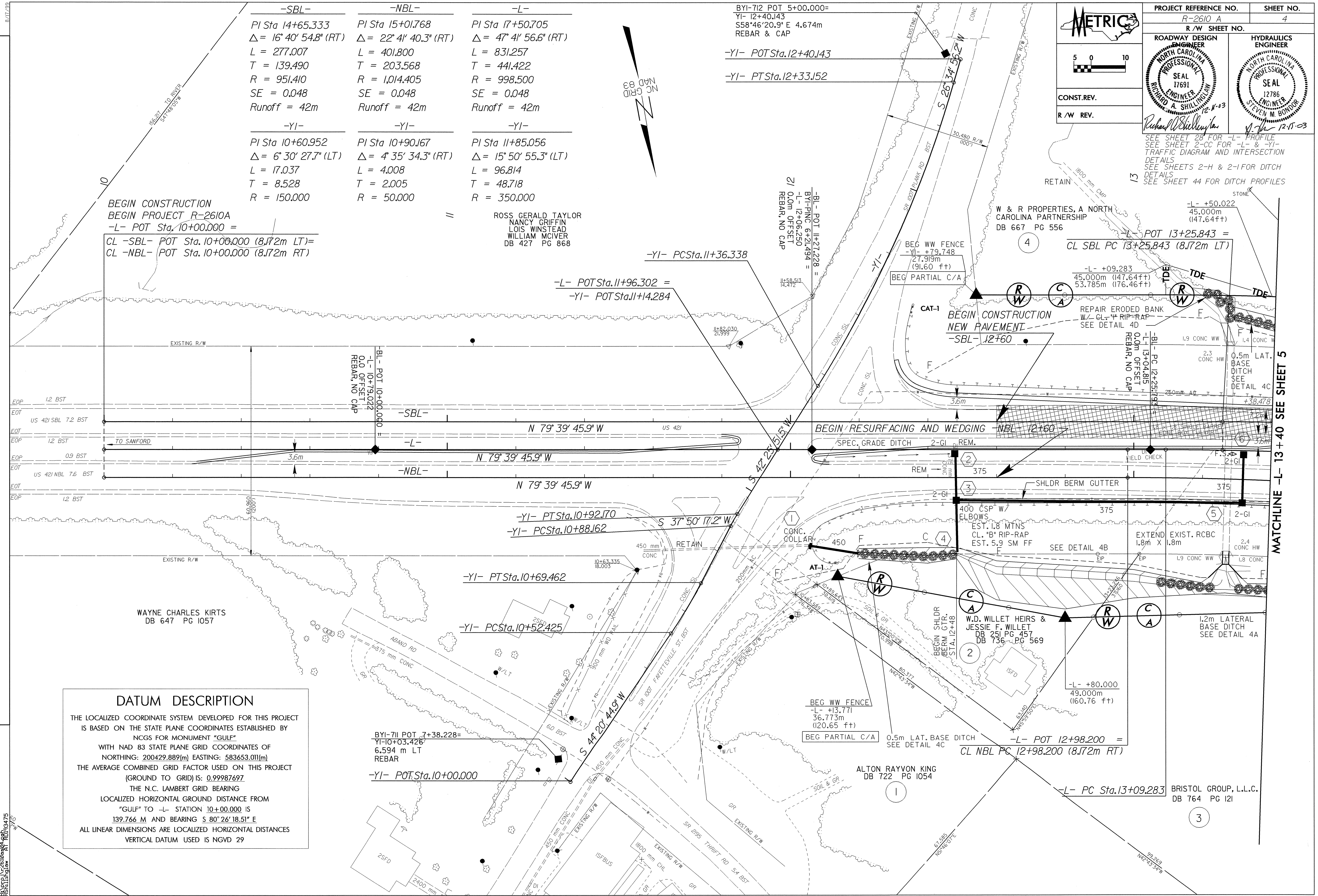
CONST. REV.
 R/W REV.

PROJECT REFERENCE NO. R-2610 A
 SHEET NO. 4
 R/W SHEET NO.

ROADWAY DESIGN ENGINEER
 NORTH CAROLINA PROFESSIONAL SEAL
 17691
 RICHARD A. SHILLING
 12-K-03

HYDRAULICS ENGINEER
 NORTH CAROLINA PROFESSIONAL SEAL
 12786
 STEVEN M. BOYDOR
 12-15-03

SEE SHEET 28 FOR -L- PROFILE
 SEE SHEET 2-CC FOR -L- & -YI- TRAFFIC DIAGRAM AND INTERSECTION DETAILS
 SEE SHEETS 2-H & 2-I FOR DITCH DETAILS
 SEE SHEET 44 FOR DITCH PROFILES



DATUM DESCRIPTION

THE LOCALIZED COORDINATE SYSTEM DEVELOPED FOR THIS PROJECT IS BASED ON THE STATE PLANE COORDINATES ESTABLISHED BY NCGS FOR MONUMENT "GULF" WITH NAD 83 STATE PLANE GRID COORDINATES OF NORTHING: 200429.889(m) EASTING: 583653.011(m) THE AVERAGE COMBINED GRID FACTOR USED ON THIS PROJECT (GROUND TO GRID) IS: 0.99987697 THE N.C. LAMBERT GRID BEARING LOCALIZED HORIZONTAL GROUND DISTANCE FROM "GULF" TO -L- STATION 10+00.000 IS 139.766 M AND BEARING S 80° 26' 18.51" E ALL LINEAR DIMENSIONS ARE LOCALIZED HORIZONTAL DISTANCES VERTICAL DATUM USED IS NGVD 29

MATCHLINE -L- 13+40 SEE SHEET 5