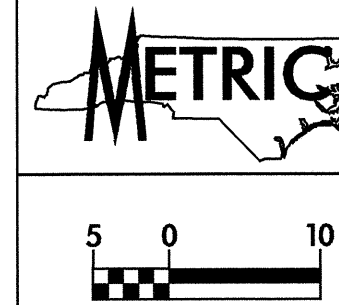
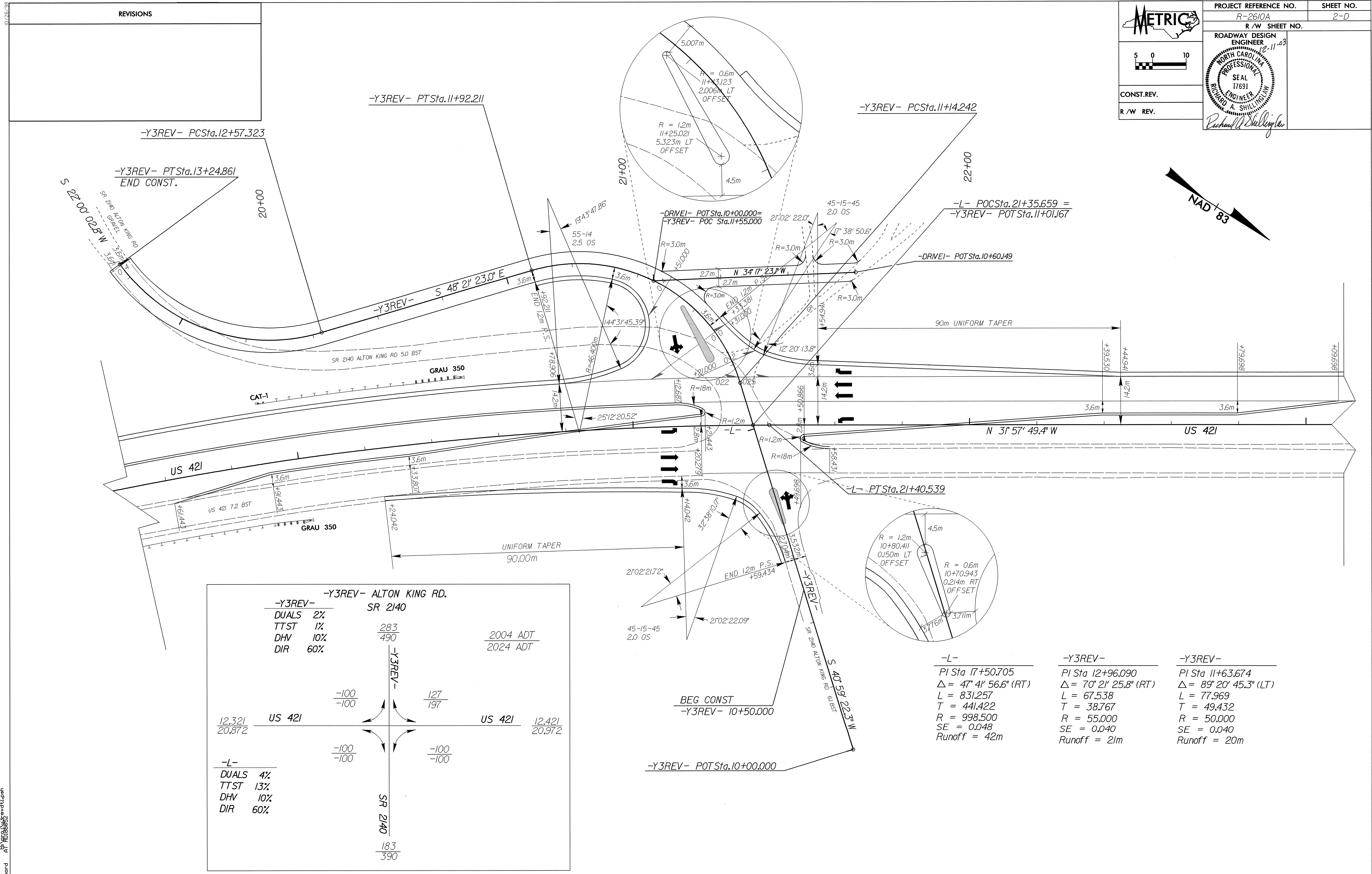
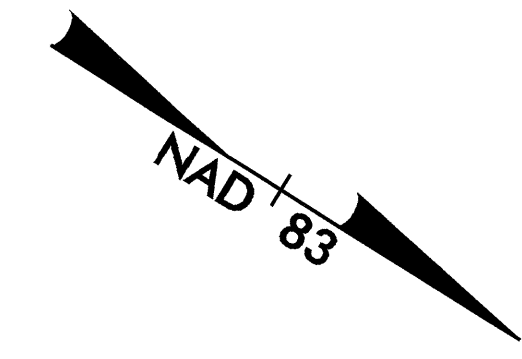


REVISIONS



PROJECT REFERENCE NO.	R-2610A	SHEET NO.	2-D
R / W SHEET NO.			
ROADWAY DESIGN ENGINEER	12.11.03		
SEAL	17691		
ENGINEER	RICHARD A. SHILLING		
CONST. REV.			
R / W REV.			



-Y3REV- ALTON KING RD. SR 2140			
DUALS	2%	283	2004 ADT
TTST	1%	490	2024 ADT
DHV	10%		
DIR	60%		
-Y3REV-			
	-100	127	
	-100	197	
12,321	US 421	US 421	12,421
20,872			20,972
-Y3REV-			
	-100	-100	
	-100	-100	
-L-			
DUALS	4%	183	
TTST	13%	390	
DHV	10%		
DIR	60%		

-L-	-Y3REV-	-Y3REV-
PI Sta 17+50.705	PI Sta 12+96.090	PI Sta 11+63.674
Δ = 47° 41' 56.6" (RT)	Δ = 70° 21' 25.8" (RT)	Δ = 89° 20' 45.3" (LT)
L = 831.257	L = 67.538	L = 77.969
T = 441.422	T = 38.767	T = 49.432
R = 998.500	R = 55.000	R = 50.000
SE = 0.048	SE = 0.040	SE = 0.040
Runoff = 42m	Runoff = 21m	Runoff = 20m