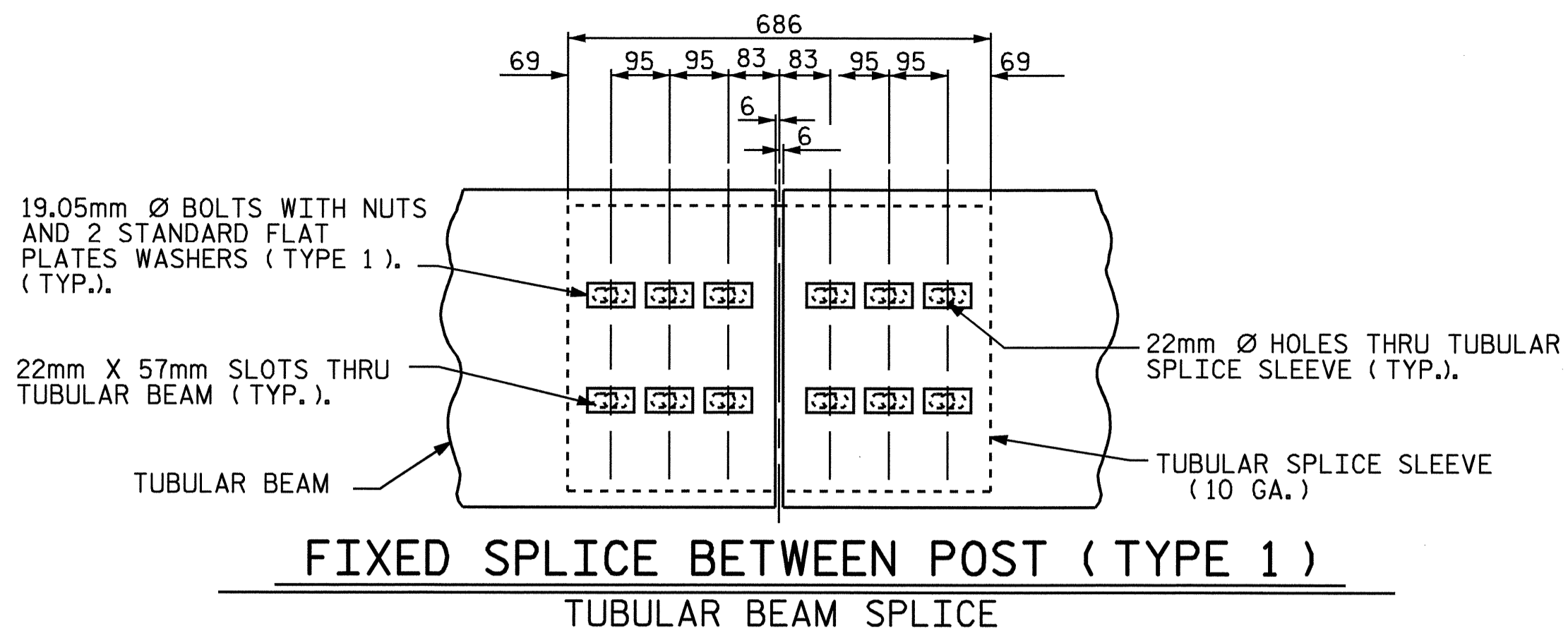
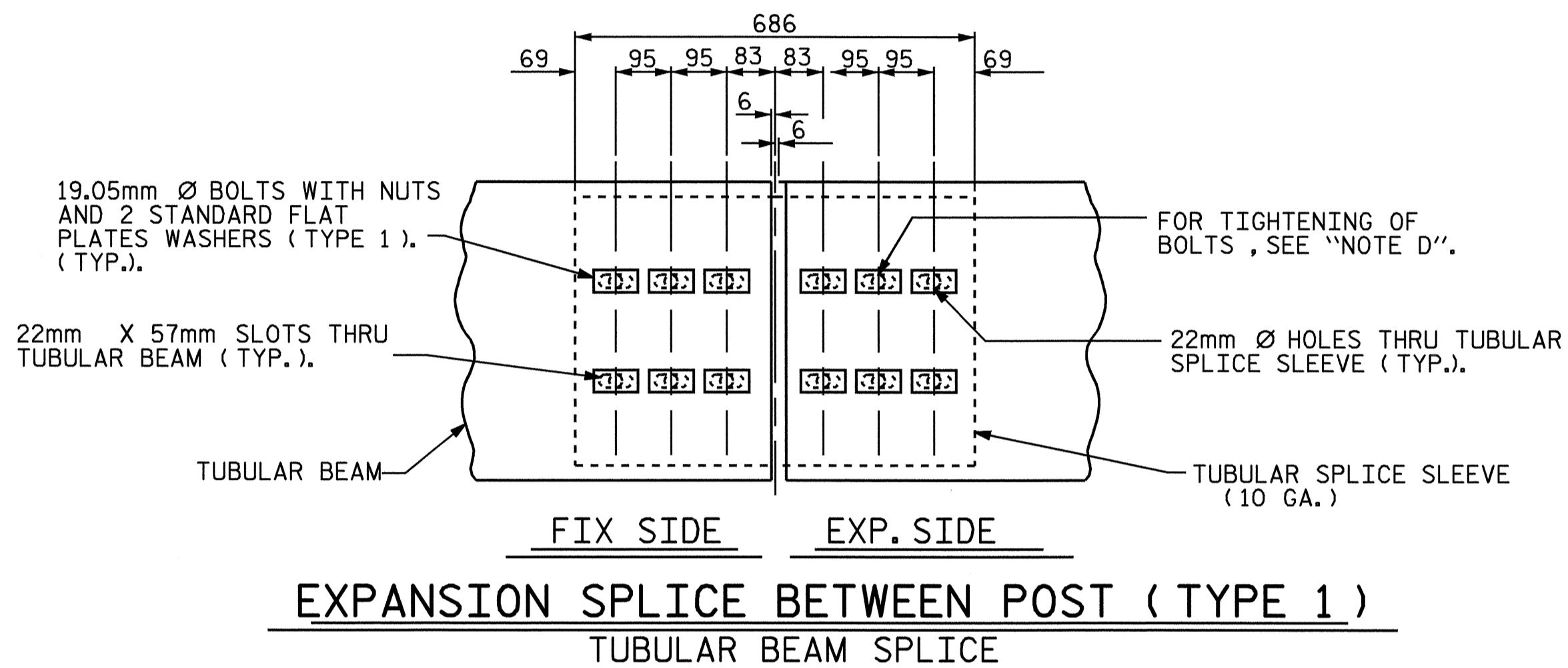


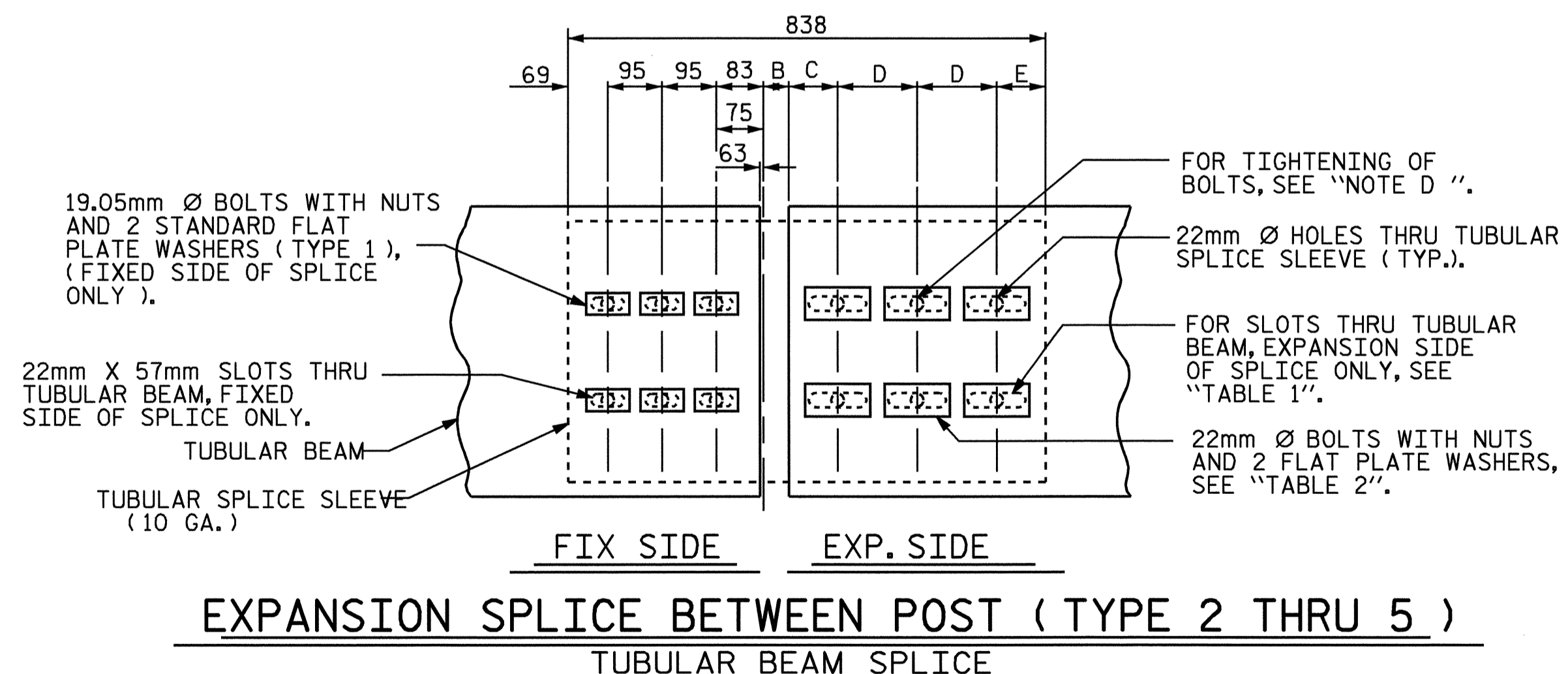
STATE	PROJECT NO.	SHEET NO.	TOTAL SHEETS
N. C.	R-2610A	2-II	
F. A. PROJ. NO.			



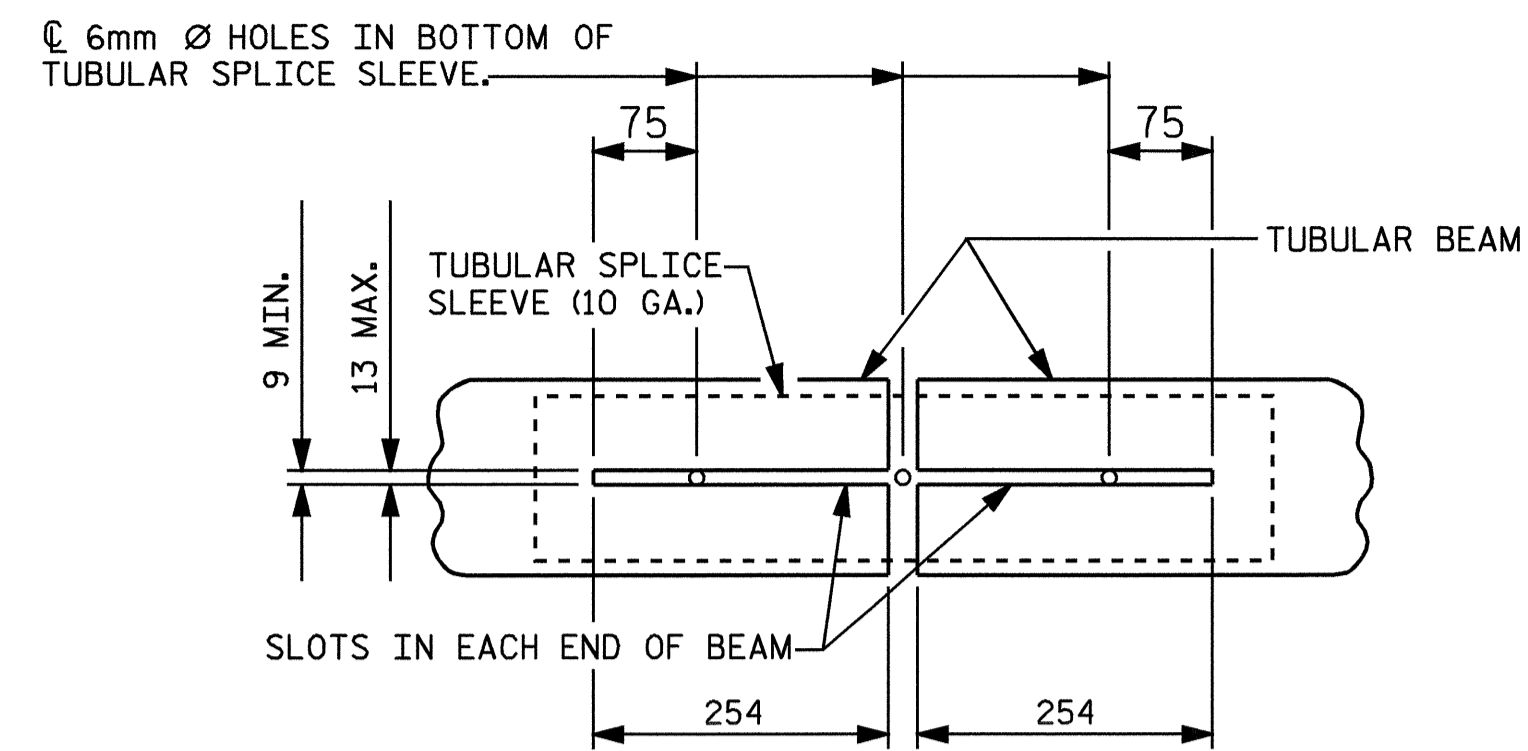
FIXED SPLICE BETWEEN POST (TYPE 1)
TUBULAR BEAM SPLICE



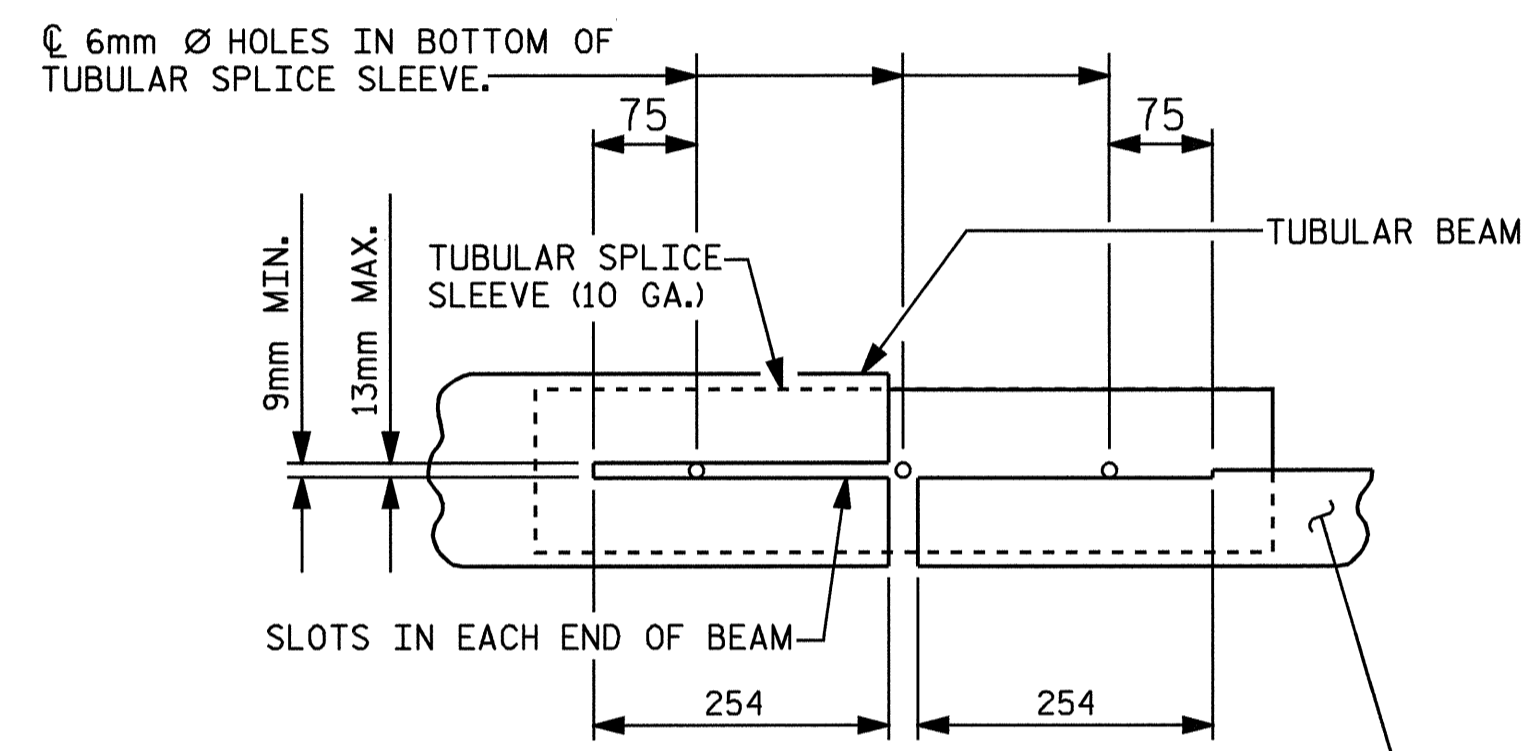
EXPANSION SPLICE BETWEEN POST (TYPE 1)
TUBULAR BEAM SPLICE



EXPANSION SPLICE BETWEEN POST (TYPE 2 THRU 5)
TUBULAR BEAM SPLICE



BOTTOM VIEW OF TUBULAR BEAM SPLICE



BOTTOM VIEW OF TUBULAR AND 508mm TRIPLE CORRUGATED STEEL BEAM SPLICE

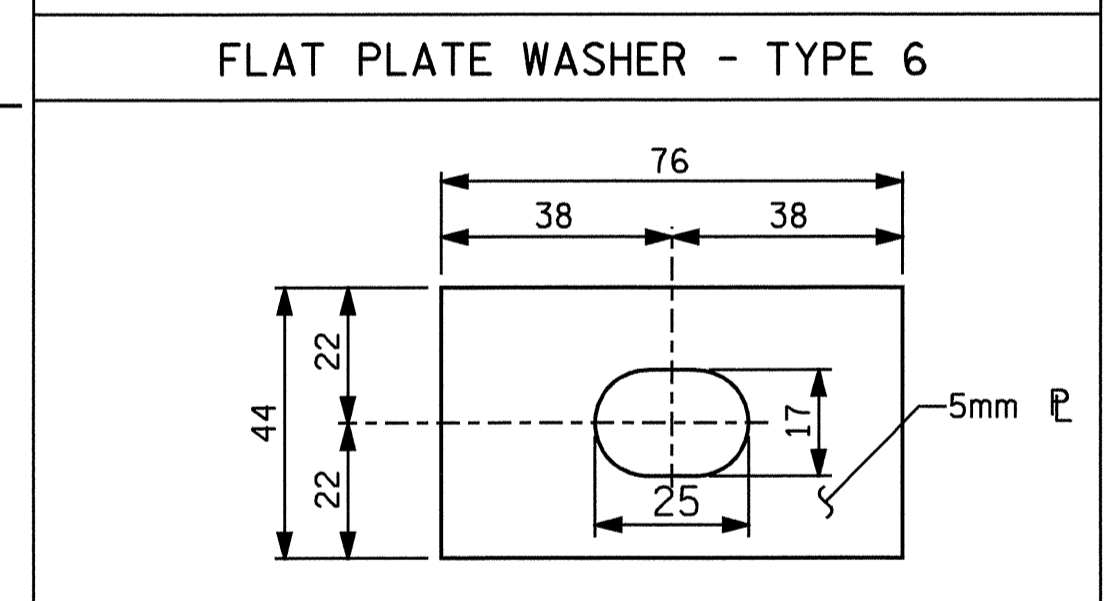
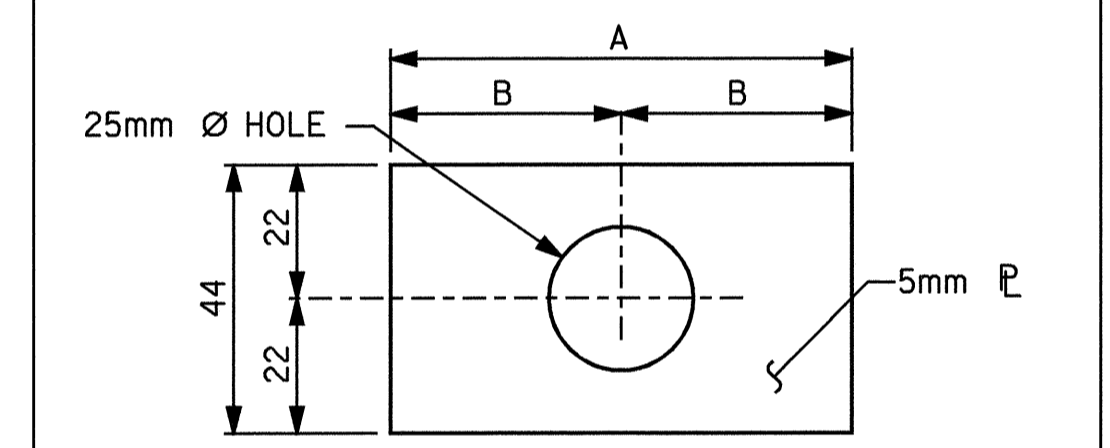
"NOTE D": BOLTS ON EXPANSION SIDE OF TUBULAR BEAM SPLICE SHALL BE TIGHTENED FINGER TIGHT, DOUBLE NUTS SHALL BE USED AND TIGHTENED AGAINST EACH OTHER TO PREVENT THE NUTS FROM BECOMING LOOSE ON THE BOLT.

TABLE 1
DIMENSIONS FOR TYPE 2 THRU 5 EXPANSION SPLICE (TUBULAR BEAM SPLICE BETWEEN POSTS)

TYPE	2	3	4	5
A	838	940	1041	1118
B	@ 32° C	32	38	49
	@ 16° C	44	57	75
	@ 0° C	57	75	103
C	86	102	121	127
D	140	165	191	216
E	86	114	121	127
SLOT SIZE	25 X 102	25 X 127	24 X 152	24 X 178

TABLE 2
FLAT PLATE WASHER DIMENSIONS

TYPE	DESCRIPTION	A	B
1	STANDARD WASHER	75	38
TYPE	USE WITH SPLICE	A	B
2	TYPE 2	114	57
3	TYPE 3	140	70
4	TYPE 4	165	83
5	TYPE 5	190	95



PROJECT NO. R-2610A
CHATHAM COUNTY

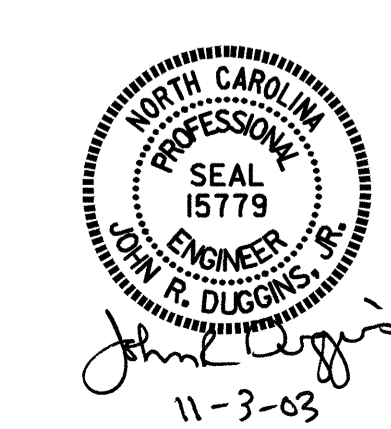
STATION: _____

SHEET 6 OF 6

STATE OF NORTH CAROLINA
DEPARTMENT OF TRANSPORTATION
RALEIGH

DETAILS FOR RETROFIT OF EXISTING BRIDGE RAIL WITH TUBULAR BEAM GUARDRAIL

REVISIONS						SHEET NO.
NO.	BY:	DATE:	NO.	BY:	DATE:	TOTAL SHEETS
1			3			
2			4			



ASSEMBLED BY : <u>M.E. POOLE</u> DATE : <u>10/03</u>	SPECIAL
CHECKED BY : <u>J.R. DUGGINS</u> DATE : <u>10/03</u>	
DRAWN BY : <u>N.M. RUFF IN</u> DATE : <u>5/88</u>	STANDARD
CHECKED BY : <u>S.B. WILLIAMS</u> DATE : <u>5/92</u>	