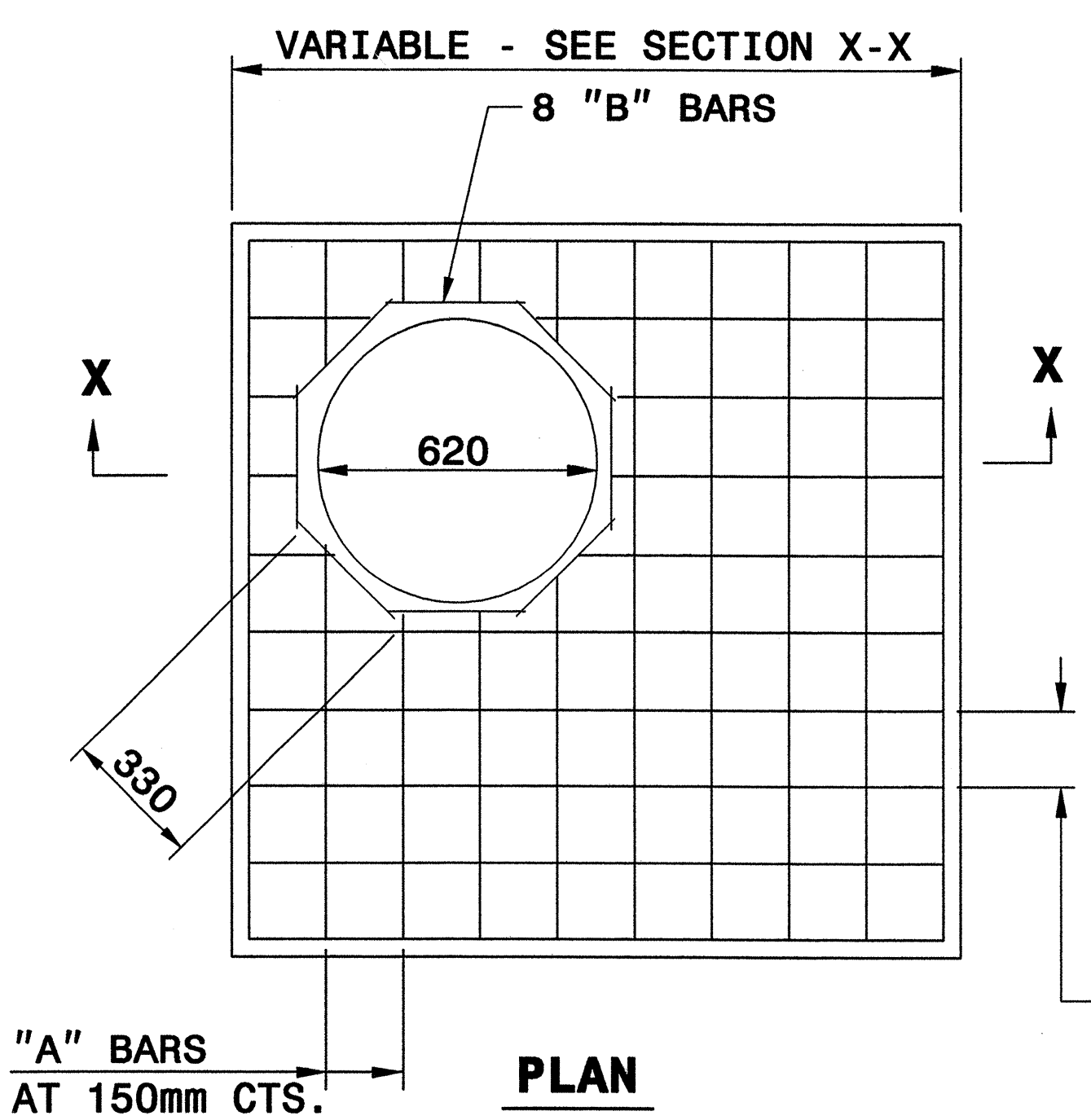
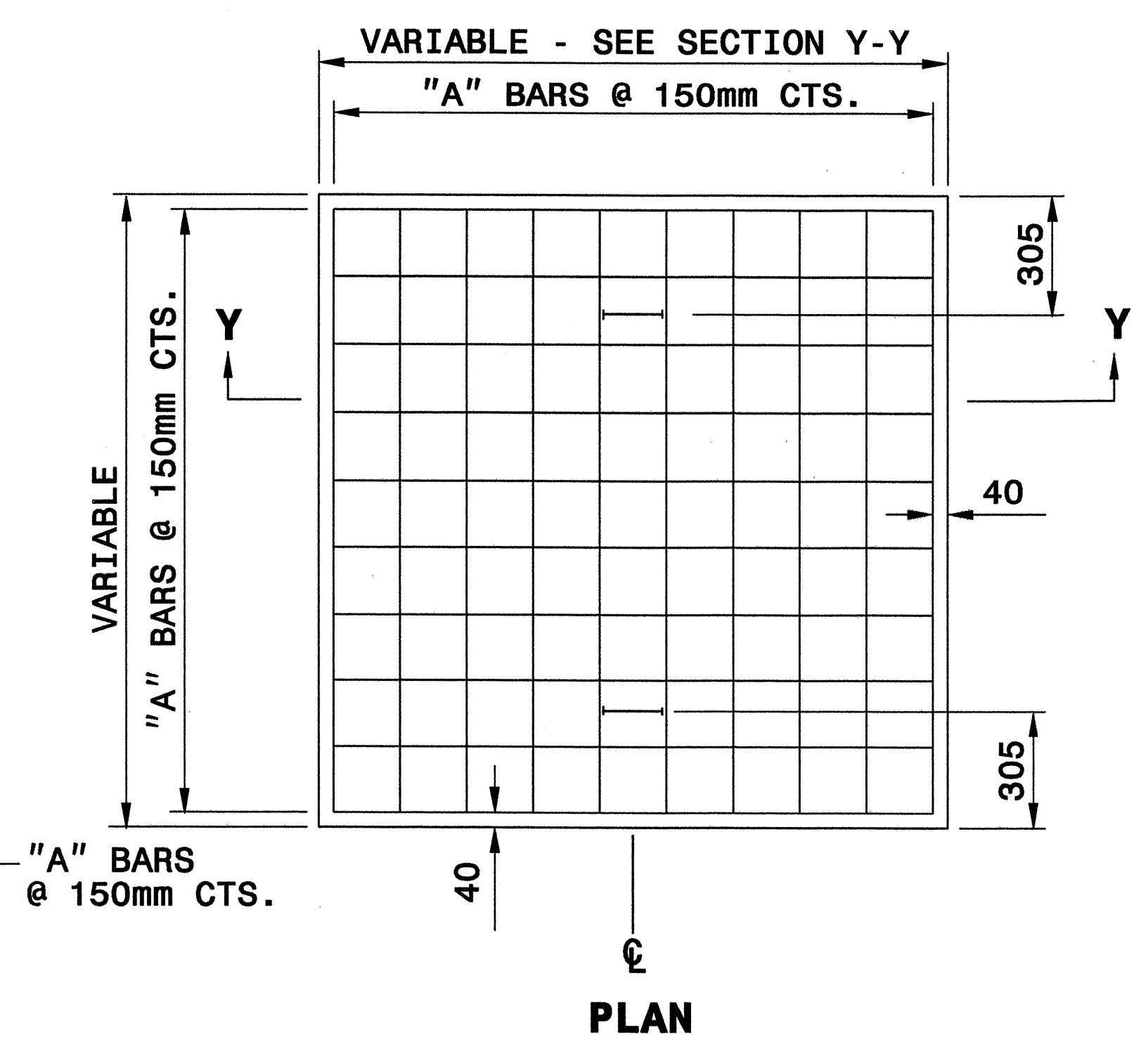


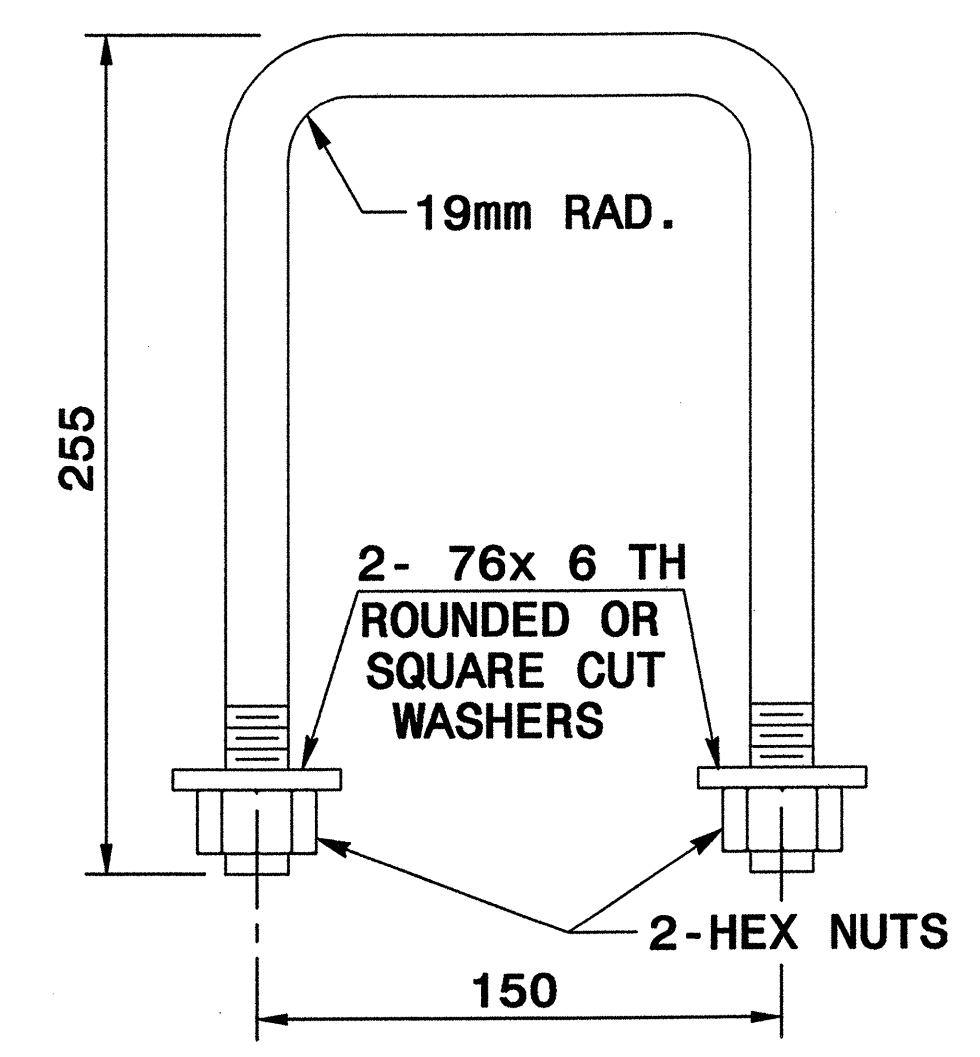
**PARTIAL SECTION**



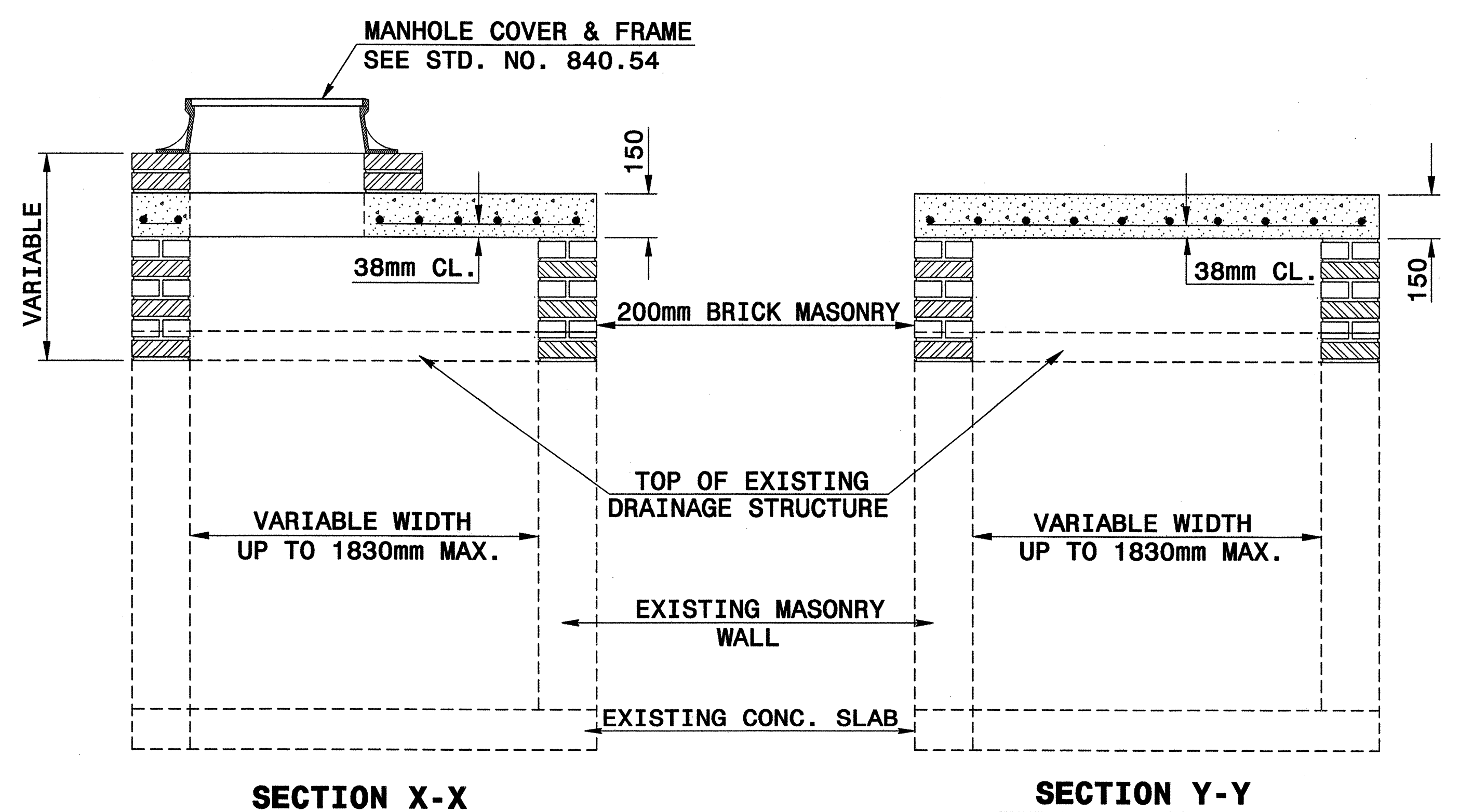
**PLAN**



**PLAN**



**DETAIL OF HANDLE**



**SECTION X-X**

**SECTION Y-Y**

**GENERAL NOTES:**

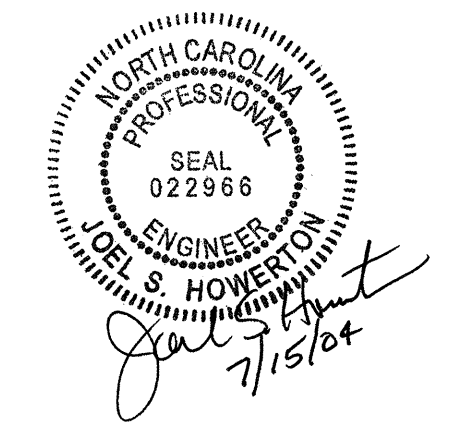
CONSTRUCT IN ACCORDANCE WITH SECTION 859 OF THE STANDARD SPECIFICATIONS.

THE DIMENSIONS FOR THE EXISTING BOXES ARE APPROXIMATE AND MAY VARY SLIGHTLY.

DETAIL INTENDED FOR NON-TRAFFIC BEARING DRAINAGE STRUCTURES.

BILL OF MATERIALS				
REINFORCING STEEL				
CODE	SIZE	QTY.	LENGTH	REINF. STEEL kgs.
A	#16	20	1370	45.52
B	#16	8	330	4.10
TOTAL				49.62 *
MASONRY				m <sup>3</sup>
TOP SLAB CONCRETE CLASS "B"				.3305 *
BRICK MASONRY PER m HT (MIN)				1.7651

**\* NOTE:**  
QUANTITIES BASED ON 1070mm X 1070mm DRAINAGE STRUCTURE. ADJUST QUANTITIES FOR LARGER STRUCTURES AND MANHOLE CONSTRUCTION.



**DESIGN SERVICES UNIT  
STANDARDS AND SPECIAL DESIGN**  
Office 919-250-4128 FAX 919-250-4119

**DETAIL TO CONVERT EXISTING  
DROP INLET OR CATCH BASIN  
TO JUNCTION BOX  
(MANHOLE OPTIONAL)**

ORIGINAL BY: T.S.S. DATE: NOV 1997  
 MODIFIED BY: T.S.S. DATE: FEB 2000  
 CHECKED BY: [Signature] DATE: 7/04  
 FILE SPEC.: 05174:usr/details/metric/stand/boxtoib.dgn