

-L-
 PI Sta 30+60.891
 $\Delta = 19^\circ 48' 16.9''$ (LT)
 $L = 411.332$
 $T = 207.739$
 $R = 1,190.000$
 $SE = 0.041$
 Runoff = 36m

METRIC

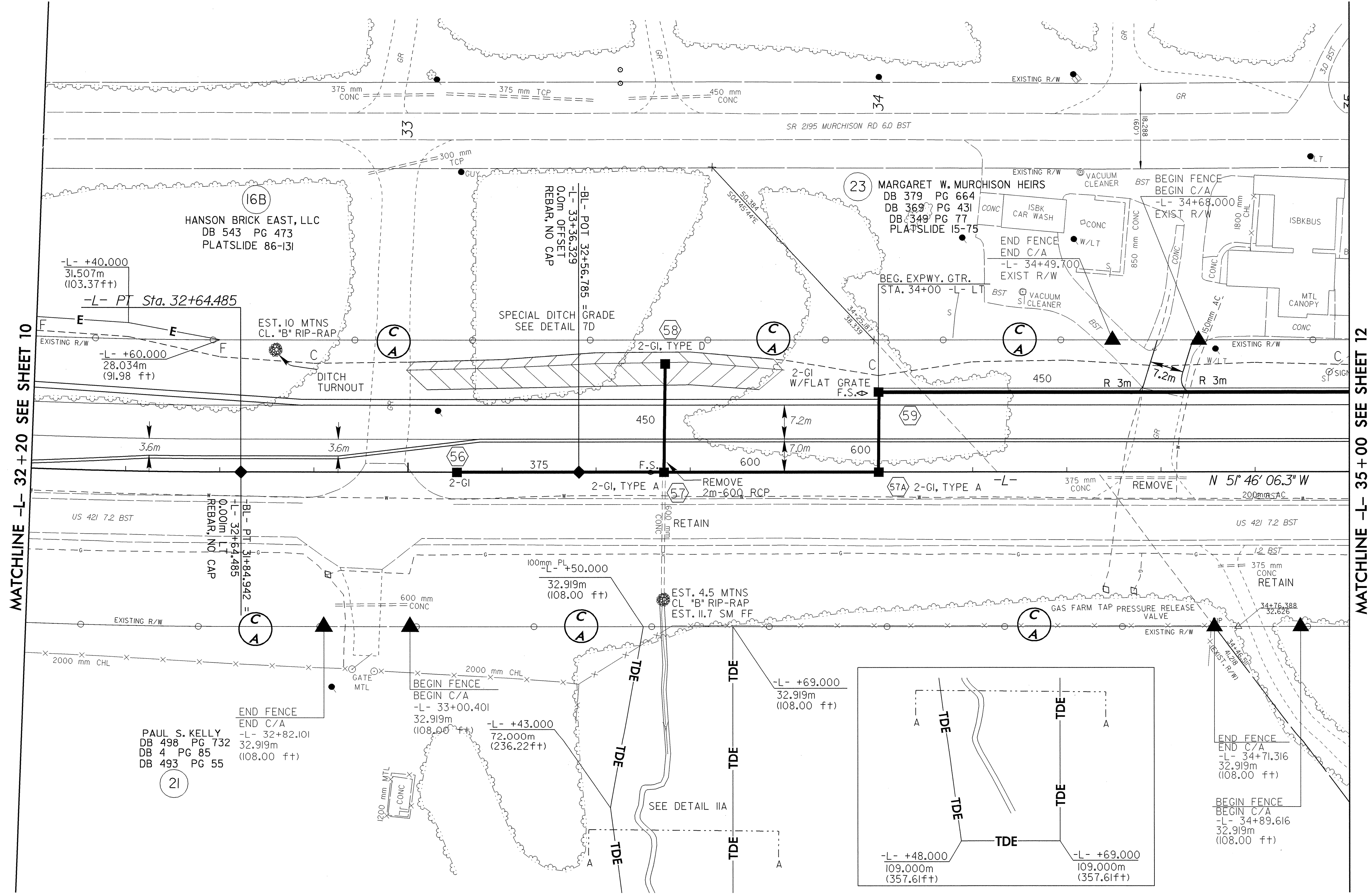
5 0 10

CONST. REV.
 R/W REV.

PROJECT REFERENCE NO. R-2610 A	SHEET NO. 11
ROADWAY DESIGN ENGINEER 1.6.04	HYDRAULICS ENGINEER
 RICHARD A. SHULL 17691 NORTH CAROLINA PROFESSIONAL ENGINEER	 STEVEN M. BOUDIER 12786 NORTH CAROLINA PROFESSIONAL ENGINEER

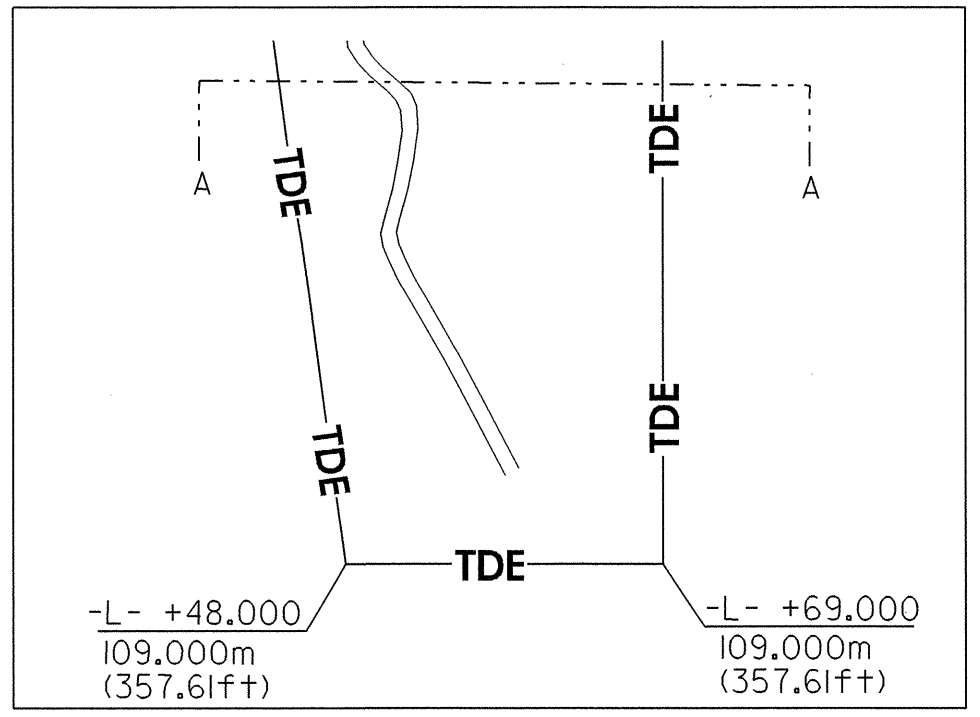
SEE SHEET 30 & 31 FOR -L- PROFILE
 SEE SHEETS 2-H & 2-I FOR DITCH DETAILS
 SEE SHEET 48 FOR DITCH PROFILES

REVISIONS



MATCHLINE -L- 32+20 SEE SHEET 10

MATCHLINE -L- 35+00 SEE SHEET 12



06-JUL-2004 11:49
 R:\PROJECTS\2610A\11-11-04\11-11-04.dwg
 11-11-04