

METRIC

5 0 10

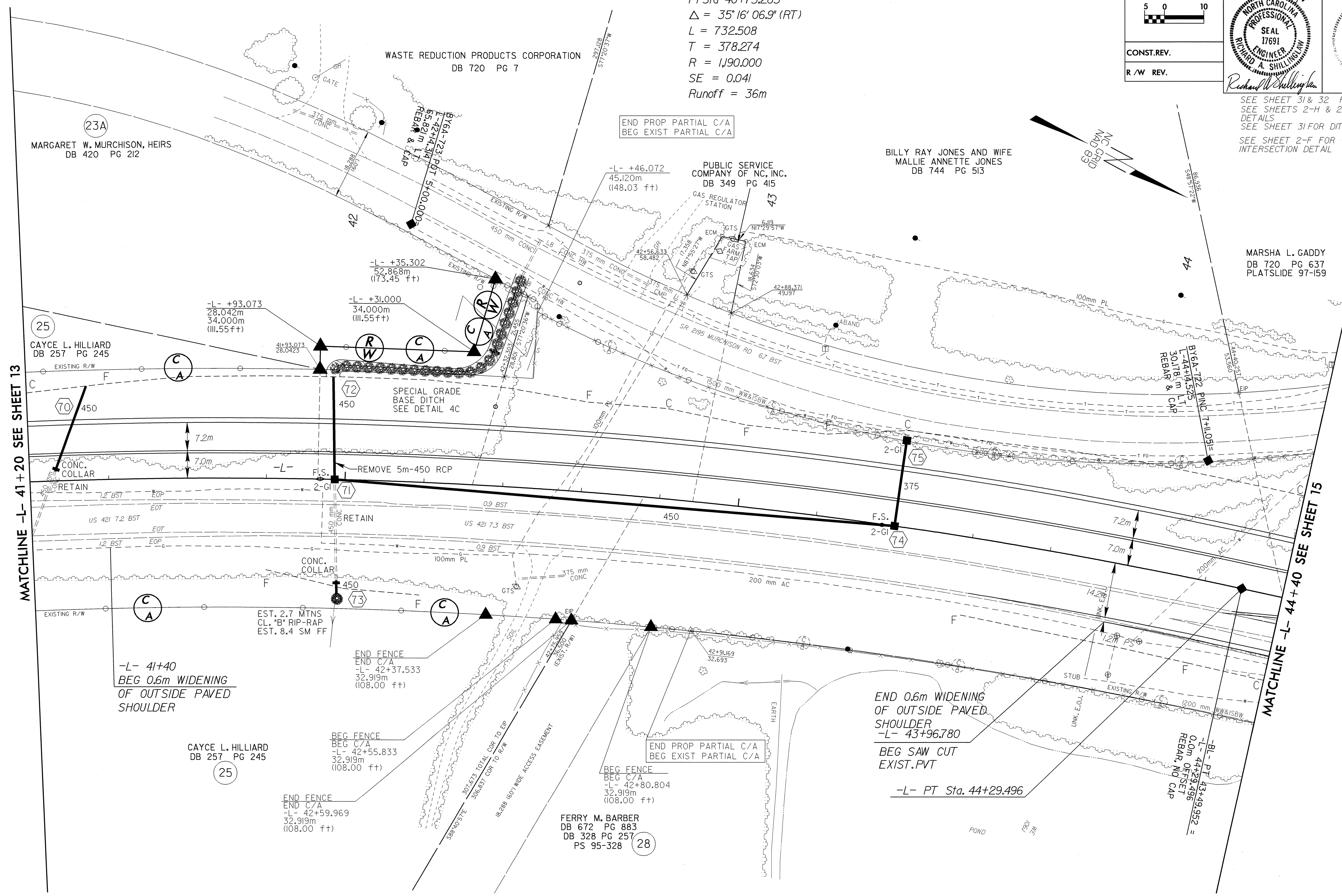
CONST. REV.

R/W REV.

PROJECT REFERENCE NO. R-2610 A	SHEET NO. 14
R/W SHEET NO.	
ROADWAY DESIGN ENGINEER NORTH CAROLINA PROFESSIONAL SEAL 17691 RICHARD A. SHILLINGLAW 3-23-04	HYDRAULICS ENGINEER NORTH CAROLINA PROFESSIONAL SEAL 12786 STEVEN M. BONDUR 3-29-04

-L-

PI Sta 40+75.263
 $\Delta = 35^{\circ}16'06.9''$ (RT)
 $L = 732.508$
 $T = 378.274$
 $R = 1,190.000$
 $SE = 0.041$
 Runoff = 36m



MATCHLINE -L- 41+20 SEE SHEET 13

MATCHLINE -L- 44+40 SEE SHEET 15

REVISIONS

22-MAR-2004 15:48
 RD187117