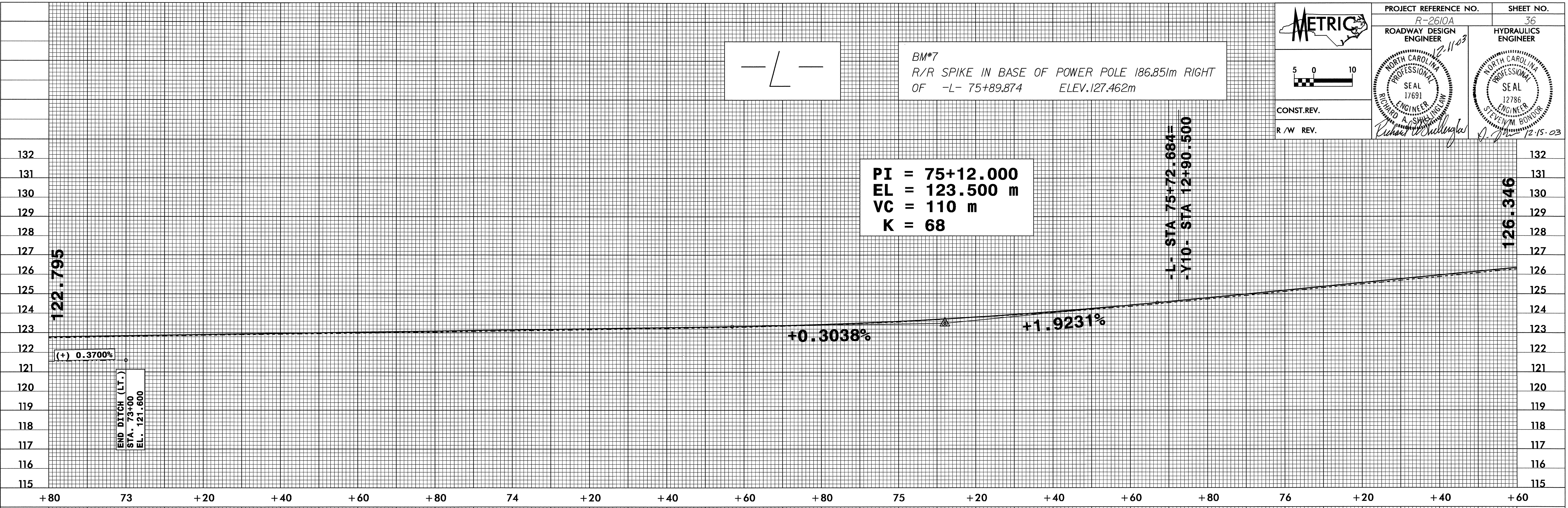


PROJECT REFERENCE NO. R-2610A	SHEET NO. 36
ROADWAY DESIGN ENGINEER 12-11-03	HYDRAULICS ENGINEER
NORTH CAROLINA PROFESSIONAL ENGINEER SEAL 17691 RICHARD A. SHAW, INC.	NORTH CAROLINA PROFESSIONAL ENGINEER SEAL 12786 STEVEN M. BONIOR
CONST. REV.	R / W REV.

BM\*7  
R/R SPIKE IN BASE OF POWER POLE 186.85m RIGHT OF -L- 75+89.874 ELEV. 127.462m

PI = 75+12.000  
EL = 123.500 m  
VC = 110 m  
K = 68

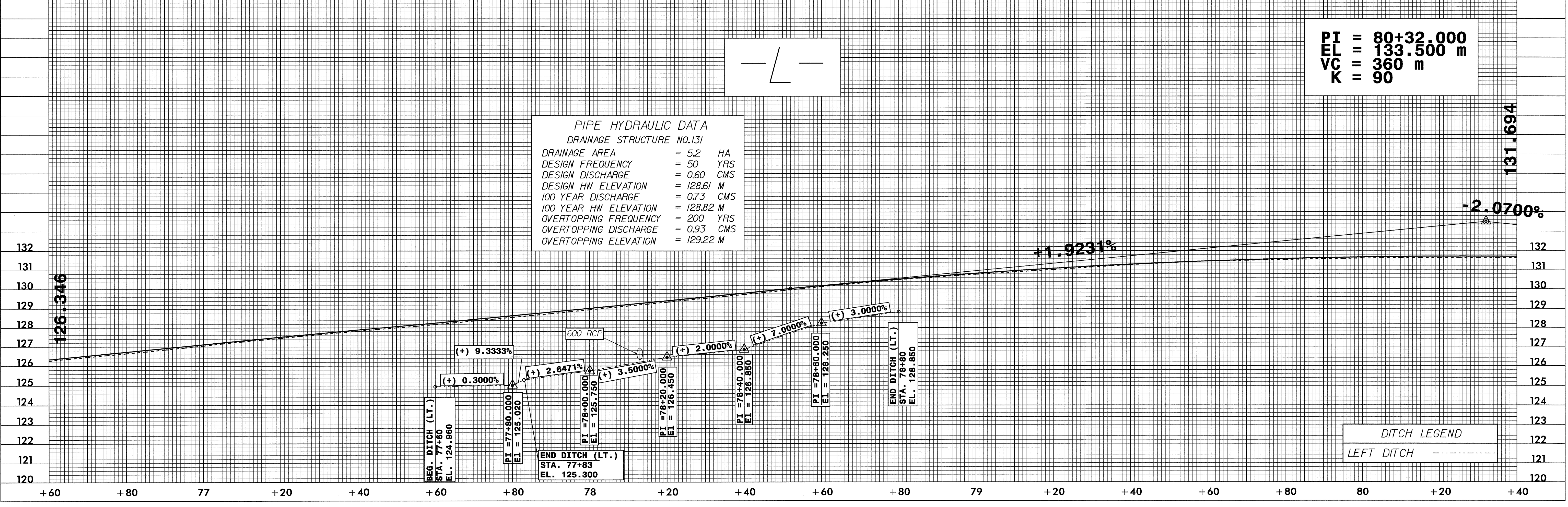
-L- STA 75+72.684 =  
-Y10- STA 12+90.500



PIPE HYDRAULIC DATA  
DRAINAGE STRUCTURE NO.131

DRAINAGE AREA	= 5.2 HA
DESIGN FREQUENCY	= 50 YRS
DESIGN DISCHARGE	= 0.60 CMS
DESIGN HW ELEVATION	= 128.61 M
100 YEAR DISCHARGE	= 0.73 CMS
100 YEAR HW ELEVATION	= 128.82 M
OVERTOPPING FREQUENCY	= 200 YRS
OVERTOPPING DISCHARGE	= 0.93 CMS
OVERTOPPING ELEVATION	= 129.22 M

PI = 80+32.000  
EL = 133.500 m  
VC = 360 m  
K = 90



DITCH LEGEND  
LEFT DITCH - - - - -

03-NOV-2003 07:31  
V:\hard AT 10108852