

0.2/2/03

# -L- DITCH PROFILES

**METRIC**

CONST. REV.  
R/W REV.

PROJECT REFERENCE NO. *R-2610A* SHEET NO. *44*

ROADWAY DESIGN ENGINEER *R-16-03* HYDRAULICS ENGINEER

NORTH CAROLINA PROFESSIONAL SEAL 17691 RICHARD A. SHILLINGHAM

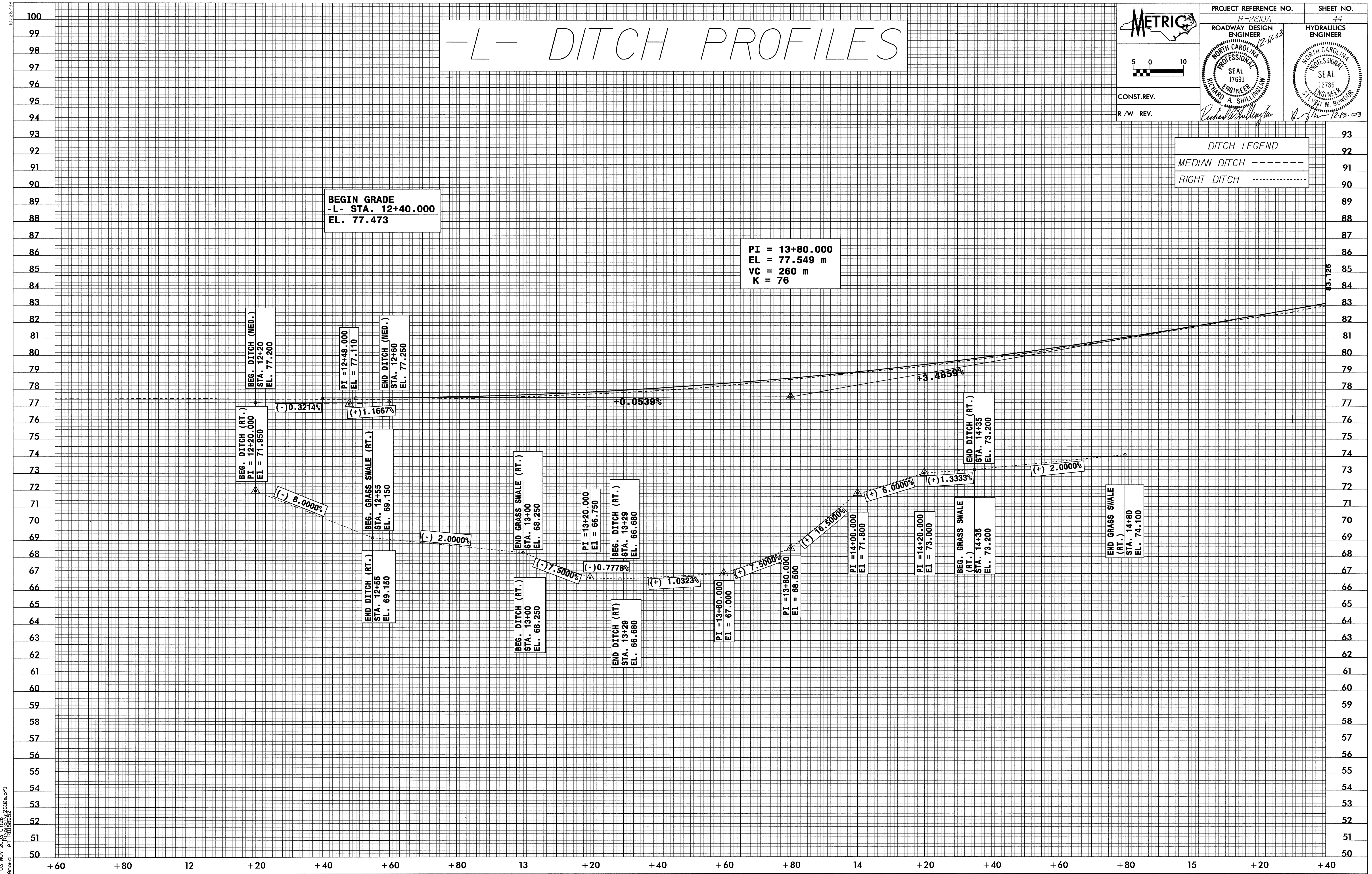
NORTH CAROLINA PROFESSIONAL SEAL 12786 STEVEN M. BONDOR

12/15/03

DITCH LEGEND	
MEDIAN DITCH	-----
RIGHT DITCH	-----

**BEGIN GRADE**  
-L- STA. 12+40.000  
EL. 77.473

PI = 13+80.000  
EL = 77.549 m  
VC = 260 m  
K = 76



03-NOV-2003 07:28  
Y:\p\card AT 1008352210.p1