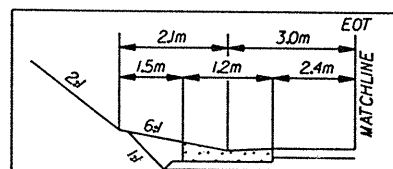
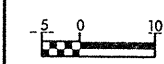


REVISIONS

SEE SHEET 27-28 FOR -L- PROFILE



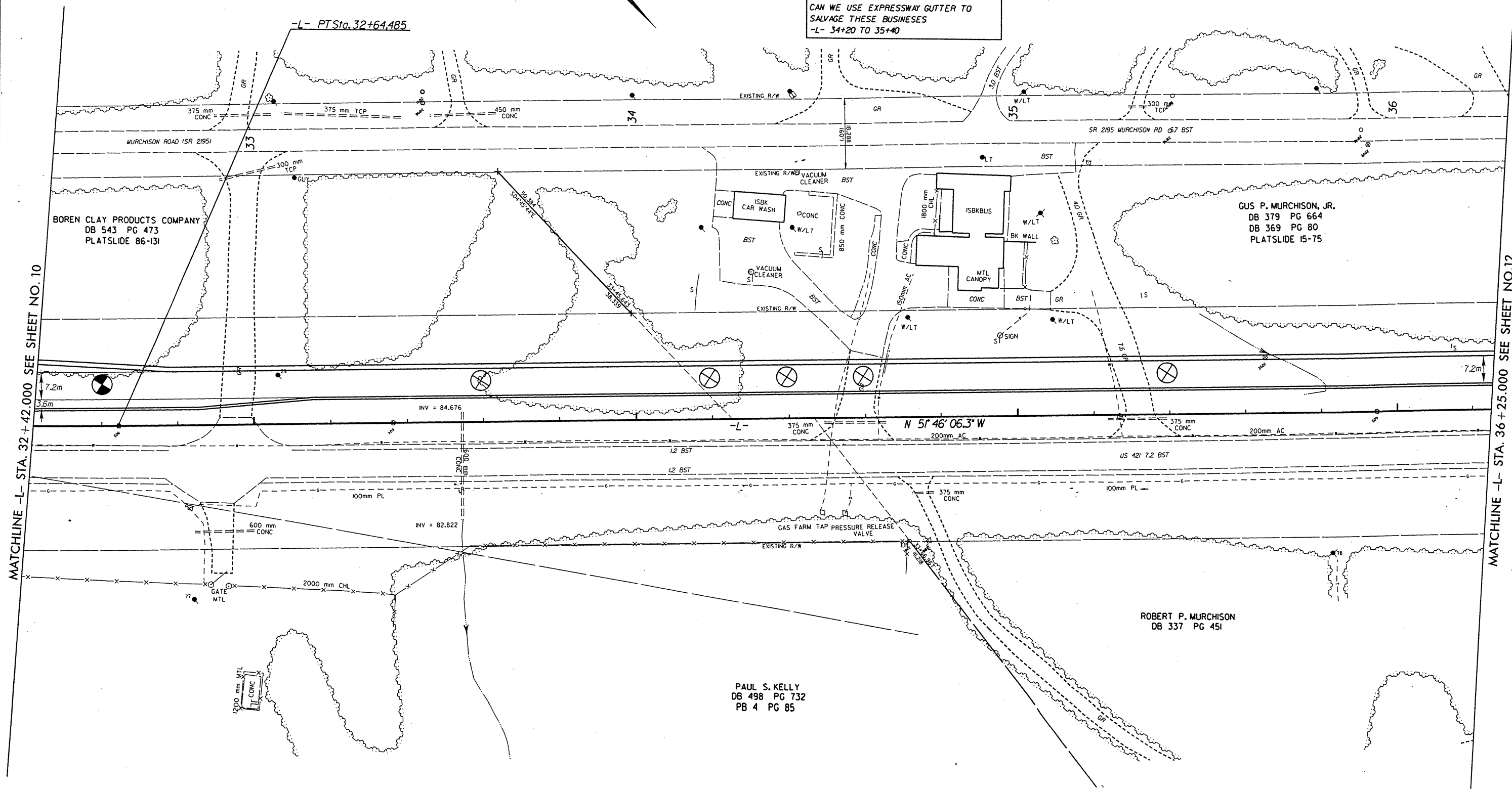
PROJECT REFERENCE NO. R-2610A	SHEET NO. 11
R/W SHEET NO.	
ROADWAY DESIGN ENGINEER	HYDRAULICS ENGINEER
<b>PRELIMINARY PLANS</b> DO NOT USE FOR CONSTRUCTION <b>INCOMPLETE PLANS</b> DO NOT USE FOR R/W ACQUISITION	
CONST. REV. _____	
R/W REV. _____	



-L-  
 PI Sta 30+60.891  
 $\Delta = 19^\circ 48' 16.9''$  (LT)  
 $L = 411.332$   
 $T = 207.739$   
 $R = 1,190.000$   
 $SE = 0.041$   
 Runoff = 36m

NOTE TO HYDRO:  
 CAN WE USE EXPRESSWAY GUTTER TO SALVAGE THESE BUSINESSES  
 -L- 34+20 TO 35+40

68 00' 00" N  
 88 00' 00" W



MATCHLINE -L- STA. 32+42.000 SEE SHEET NO. 10

MATCHLINE -L- STA. 36+25.000 SEE SHEET NO. 12

BOREN CLAY PRODUCTS COMPANY  
 DB 543 PG 473  
 PLATSLIDE 86-131

GUS P. MURCHISON, JR.  
 DB 379 PG 664  
 DB 369 PG 80  
 PLATSLIDE 15-75

ROBERT P. MURCHISON  
 DB 337 PG 451

PAUL S. KELLY  
 DB 498 PG 732  
 PB 4 PG 85

DATE PLOTTED: 11/15/05 10:58 AM