

REVISIONS

SEE SHEET 28 FOR -L- PROFILE

-L-  
PI Sta 40+75.263  
 $\Delta = 35' 16" 06.9" (RT)$   
 $L = 732.508$   
 $T = 378.274$   
 $R = 1190.000$   
 $SE = 0.041$   
Runoff = 36m



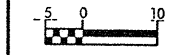
PROJECT REFERENCE NO. SHEET NO.

R-2610A 12

R/W SHEET NO.

ROADWAY DESIGN ENGINEER

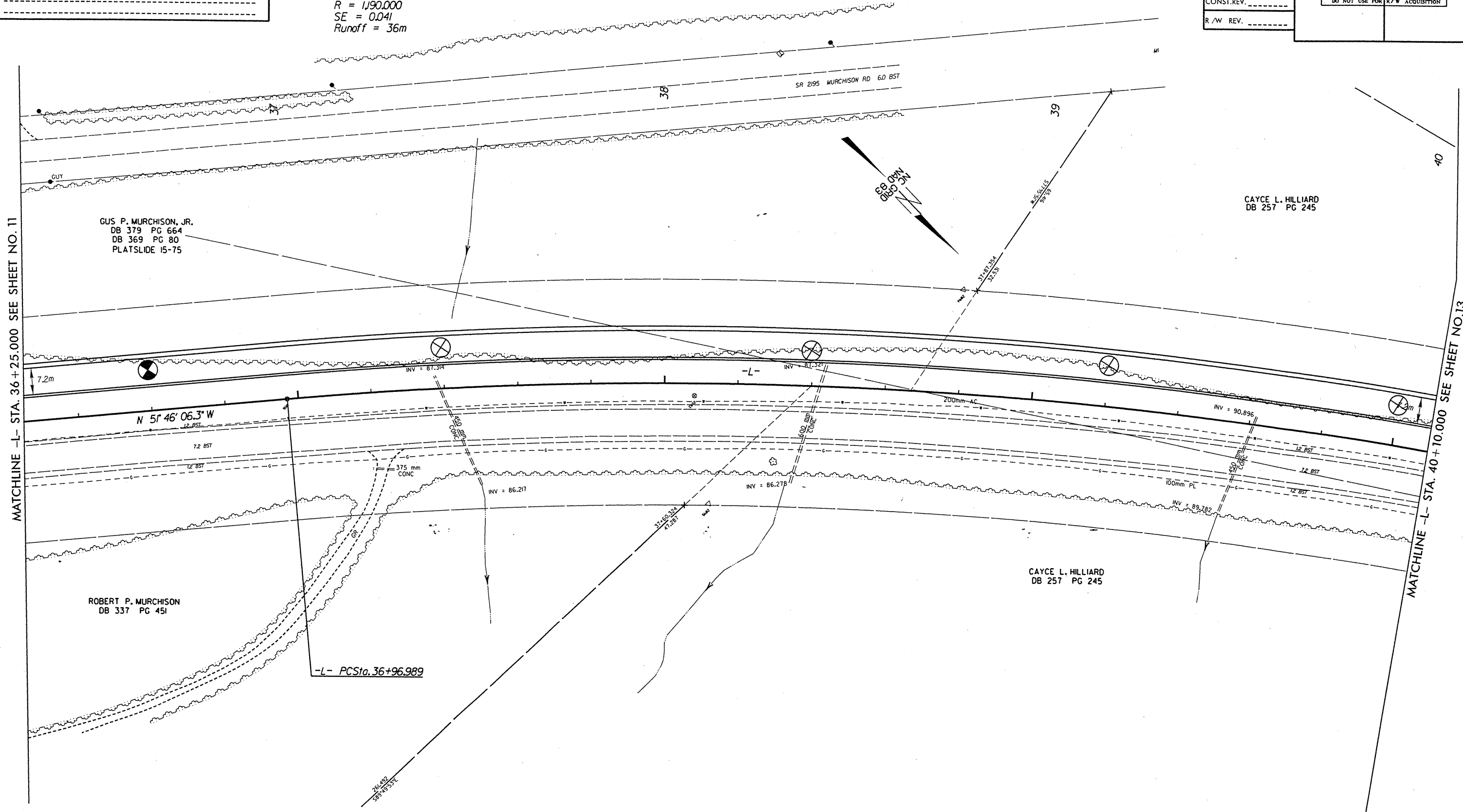
HYDRAULICS ENGINEER



PRELIMINARY PLANS  
DO NOT USE FOR CONSTRUCTION  
INCOMPLETE PLANS  
DO NOT USE FOR R/W ACQUISITION

CONST. REV. \_\_\_\_\_

R/W REV. \_\_\_\_\_



MATCHLINE -L- STA. 36 + 25.000 SEE SHEET NO. 11

MATCHLINE -L- STA. 40 + 10.000 SEE SHEET NO. 13

GUS P. MURCHISON, JR.  
DB 379 PG 664  
DB 369 PG 80  
PLATSLIDE 15-75

ROBERT P. MURCHISON  
DB 337 PG 451

CAYCE L. HILLIARD  
DB 257 PG 245

CAYCE L. HILLIARD  
DB 257 PG 245

-L- PCSta. 36+96.989

\*\*\*\*\*  
SYTIME  
\*\*\*\*\*