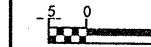


REVISIONS



PROJECT REFERENCE NO. R-2610A	SHEET NO. 20
R/W SHEET NO.	
ROADWAY DESIGN ENGINEER	HYDRAULICS ENGINEER
PRELIMINARY PLANS DO NOT USE FOR CONSTRUCTION	
INCOMPLETE PLANS DO NOT USE FOR R/W ACQUISITION	
CONST. REV. _____	
R/W REV. _____	



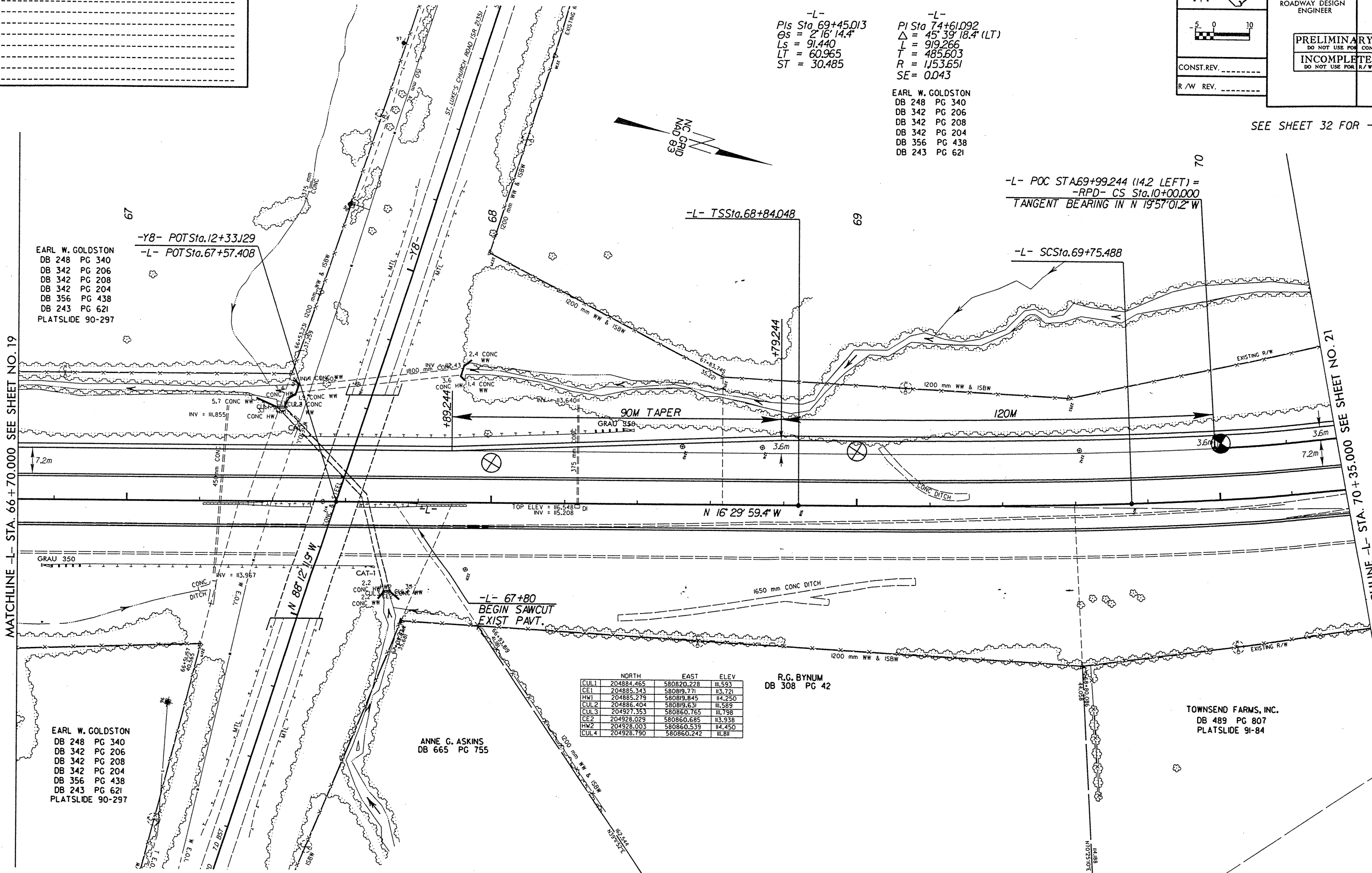
CONST. REV. \_\_\_\_\_  
R/W REV. \_\_\_\_\_

-L-  
 PIs Sta 69+45.013  
 Os = 2' 16" 14.4"  
 Ls = 91.440  
 LT = 60.965  
 ST = 30.485

-L-  
 PI Sta 74+61.092  
 Δ = 45° 39' 18.4" (LT)  
 L = 919.266  
 T = 485.603  
 R = 1153.651  
 SE = 0.043

EARL W. GOLDSTON  
 DB 248 PG 340  
 DB 342 PG 206  
 DB 342 PG 208  
 DB 342 PG 204  
 DB 356 PG 438  
 DB 243 PG 621

SEE SHEET 32 FOR -L- PROFILE



MATCHLINE -L- STA. 66+70.000 SEE SHEET NO. 19

MATCHLINE -L- STA. 70+35.000 SEE SHEET NO. 21

EARL W. GOLDSTON  
 DB 248 PG 340  
 DB 342 PG 206  
 DB 342 PG 208  
 DB 342 PG 204  
 DB 356 PG 438  
 DB 243 PG 621  
 PLATSLIDE 90-297

EARL W. GOLDSTON  
 DB 248 PG 340  
 DB 342 PG 206  
 DB 342 PG 208  
 DB 342 PG 204  
 DB 356 PG 438  
 DB 243 PG 621  
 PLATSLIDE 90-297

ANNE G. ASKINS  
 DB 665 PG 755

R.G. BYNUM  
 DB 308 PG 42

TOWNSEND FARMS, INC.  
 DB 489 PG 807  
 PLATSLIDE 91-84

	NORTH	EAST	ELEV
CUL 1	204884.465	580820.228	111.593
CE 1	204885.343	580819.771	113.721
HW 1	204885.279	580819.845	114.250
CUL 2	204886.404	580819.631	111.589
CUL 3	204927.353	580860.765	111.798
CE 2	204928.029	580860.685	113.938
HW 2	204928.003	580860.539	114.450
CUL 4	204928.790	580860.242	111.811

PLANNING ENGINEER